



Rebecca Marie Martonik Receives 2014 Youth Achievement Award

Rebecca Marie Martonik, 18, of Conyngham, Pennsylvania, is this year's recipient of the LPSCU Youth Achievement Award. Rebecca was nominated for the award by her mother, who mentioned that Rebecca always enjoyed reading the *Zornicka* and being a part of the LPSCU.

Rebecca recently graduated from Hazleton Area High School where she was an outstanding student and was very well liked by her teachers and peers. During her recently completed senior year, she worked as an office assistant at the school. She was very conscientious about her work and always took the initiative to get her tasks done. Various activities at school also kept her busy. These include being editor of the high school yearbook, and a member of the Key Club, Ecology Club, and Executive Council Club.

Rebecca found time for extra-curricular activities as well. She was the manager of the girls' basketball team and also enjoyed playing soccer, basketball, and track. She received a track team award for her long jump.

Rebecca is a member of St. John Bosco Parish in Conyngham, where she belongs to the Youth Ministry program. She has attended the March for Life in Washington, D.C., and has also participated in the Pro-Life Rosaries. Her religion is important to her and she is grateful that she has a strong Catholic faith to guide her. Rebecca's mother and grandmother have taught her the importance of volunteering as well as the skills of baking and making pirohi for church bake sales and events. She volunteers her time doing all of that at SS. Cyril and Methodius Parish in Hazleton, Pennsylvania. She also works with the elderly at Providence Place and Fritzingertown nursing homes.

Rebecca is a very respectful young woman who realizes the importance of faith, family, and friends. She is a member of Branch 1 in Hazleton, of which her grandmother, Emily Degenhart, is secretary.

Rebecca is attending the Hazleton Campus of Penn State University this fall.

The LPSCU congratulates Rebecca on all her outstanding qualities and wishes her the best for a bright and happy future.



In This Issue

Our Guest Religious Columnist.....	3	Slovak Day at Kennywood Park	12-13
Branch and Okres News	4	Minutes of the Board Conference Call Meeting.....	14
Time is Running Out!	4	Pittsburgh District Celebrates Anniversary.....	15
Branch 213 Celebrates at the Ballpark	4	SS.C.M. Sisters Mark Jubilees	16
Chelsea Maher is Scholarship Winner.....	5	2014 Midwest Slovak Pastoral Seminar Set.....	16
Slovak Language Classes Offered.....	5	Pitt Slovak Studies Program Hosting Festival.....	16
PFA Hosts Legislative Luncheon.....	5	Cooking Corner.....	16
In Memoriam	6	Christopher Robbins Graduates High School	17
Branch 213's Matching Fund Project	6	Pittsburgh Fraternal Societies Host Seminar	17
LPSCU and FSNEPA Mark Flag Day	6	A Family Tradition.....	17
Mary Ann Ackerman Obituary.....	7	NJ-NY Fraternal Alliance Marks Flag Day	17
Member Receives First Communion	7	Alexander J. Cerra Graduates High School	18
Executive Finance Committee Minutes	8	PFA Presents Legislative Award.....	18
Fraternalist of the Year Makes Donation.....	8	New Insurance Issued	18
Member Cheers for Catholic School	8	ScriptSave Report.....	19
SCF 2014 Annual Appeal Mid-Year Report	9	Nicole M. Tomasic is High School Grad	19
Pittsburgh District Members Join Hands.....	9	Dianiska District to Hold Matching Fund Event	19
Letters.....	10, 14	The 20 Payment Life Insurance Plan	20
LPSCU 2nd Quarter Report.....	10	LPSCU Planning Convention Cookbook.....	21
2014 Catholic High School Award Recipients.....	11	LPSCU Represented at NSS Convention	21
Lehigh Valley to Hold Matching Fund Event.....	11	Junior Branch Journal	22-23
LPSCU Members Celebrate Flag Day.....	11	WPSCA to Host Beer Tasting Event.....	24

Calendar of Events

SEPTEMBER

- 1** — Deadline to apply for a Pennsylvania Fraternal Alliance Scholarship.
- 4-6** — American Fraternal Alliance Annual Meeting, Austin, Texas
- 9** — First session of WPSCA's free Fall Slovak Language Class running every Tuesday from 7:00-8:30 p.m. through October 8 at the Mount Lebanon Library, 16 Castle Shannon Blvd., Pittsburgh, Pennsylvania. Registration required. *See page 5 for more details.*
- 16** — Slovak Catholic Federation Meeting, Youngstown, Ohio
- 19** — The Bratislava Boys' Choir from Bratislava, Slovakia, will perform at St. Stephen's Episcopal Church, 35 South Franklin Street, Wilkes-Barre, Pennsylvania, at 7:30 p.m. Admission is free; donations accepted.
- 19-20** — LPSCU Semiannual Meeting, Bethlehem, Pennsylvania
- 20** — The Bratislava Boys' Choir from Bratislava, Slovakia, will perform at St. Peter's Cathedral, 315 Wyoming Avenue, Scranton, Pennsylvania, at 7:30 p.m. Admission is free; donations accepted.
- 20** — **Deadline to submit articles for November/December Zornicka.**
- 21** — Pittsburgh District Meeting and Election of Officers, Rock Bottom Restaurant, Waterfront, Homestead, Pennsylvania, at 1:00 p.m.
- 21** — 2014 Midwest Slovak Pastoral Seminar, sponsored by the Slovak Catholic Federation, at the Calumet College of St. Joseph, 2400 New York Avenue, Whiting, Indiana. Luncheon at 1:00 p.m. with speaker to follow. *See page 16 for more details.*
- 21** — Liturgy and Brunch to be held in conjunction with the LPSCU Semiannual Board Meeting. Mass at St. John the Baptist Church, 924 North Front Street, Allentown, Pennsylvania, at 9:15 a.m. Brunch to follow at Best Western Plus Lehigh Valley Hotel and Conference Center, 300 Gateway Drive, Bethlehem, Pennsylvania. Reservations are required by September 2.

OCTOBER

- 11** — Annual European Beer Tasting sponsored by the Western Pennsylvania Slovak Cultural Association at the Sonoma Grill, 947 Penn Avenue, downtown Pittsburgh, Pennsylvania, from 1:00 to 4:00 p.m. *See page 24 for more details.*
- 12** — Pittsburgh District's Annual Card Party at St. Maximilian Kolbe Church, Homestead, Pennsylvania, beginning at 1:00 p.m.

continued on page 18



(USPS 699-520)



ZORNICKA (Morning Star), a bi-monthly magazine, is the official publication of the Ladies Pennsylvania Slovak Catholic Union, National Headquarters, 71 South Washington Street, Wilkes-Barre, PA 18701.

Send articles for publication to Margaret A. Ferri, Public Relations Director, 428 E. Frankford Street, Bethlehem, PA 18018. Articles must be received by the 25th of the month, five weeks prior to the issue date.

Printed by Triangle Press, 6720 Allentown Blvd., Harrisburg, PA 17112.

Periodical Postage paid at Wilkes-Barre, PA 18701 and additional entries.

Subscription Rate: Members — free; non-members — \$15.00 per year.

Postmaster: Send address changes only to: Zornicka (Morning Star), Ladies Pennsylvania Slovak Catholic Union, 71 South Washington Street, Wilkes-Barre, PA 18701.

OFFICE HOURS AT NATIONAL HEADQUARTERS

**Monday through Friday:
8:00 a.m. to 4:30 p.m.
Phone: 570/823-3513
Toll Free 888/834-6614
Fax: 570/823-4464
E-mail: lpescu@lpescu.org
Website: www.lpescu.org**

SECRETARY/TREASURER

Mary Jo Savidge, 71 South Washington Street, Wilkes-Barre, PA 18701; 570/823-3513, Fax 570/823-4464; maryjo@lpescu.org

BOARD OF DIRECTORS

PRESIDENT

Theresa A. Kluchinski, 446 Mountain Oaks Drive, Laurel Run, PA 18706; 570/829-5410; theresa@lpescu.org

VICE PRESIDENT

Anita Gregory, 304 Turkey Path Road, Sugarloaf, PA 18249; 570/788-3263; anitag13@hotmail.com

CHAIRPERSON OF TRUSTEES

Mary Ann Ewasko, 9 Shannon Street, Wilkes-Barre, PA 18702; 570/823-6432; maryann6@ptd.net

TRUSTEES

Dolores M. Evanko, 173 Berner Avenue, Hazleton, PA 18201; 570/454-5547; jje@intergrafix.net

Joan T. Hladek, 2138 Waterbury Lane E., Sycamore, IL 60178; 815/895-0431; jhladek@lpescu.org

Margaret Jollimore, 1001 SR 292E, Harveys Lake, PA 18618-7829; 570/760-9790; jollimore.lpescu@ymail.com

FRATERNAL ACTIVITIES DIRECTOR

Cecilia B. Gaughan, 325 Florida Avenue, Whitehall, PA 18052; 610/433-4610; cbgaughan@msn.com

PUBLIC RELATIONS DIRECTOR

Margaret A. Ferri, 428 East Frankford Street, Bethlehem, PA 18018; 610/866-8945; mfluvbaskets@gmail.com

Saints and Seasons in the Liturgical Year

Part One

The prayer and worship of the Catholic Church are great living treasures that invite us to journey with the Lord and our brothers and sisters in Christ. One tool we can use as Catholics to enhance our prayer life is to spend some time reflecting on the Liturgical Calendar of the Church. This can easily be done by those who regularly attend daily Mass.

At daily Mass we can grow in our understanding of the Seasons of the Church Year, its aim and purpose, and also become more aware of the Saints of the Church who are celebrated on the universal calendar of the Church. If you find it difficult to attend Mass each day, it is possible for you to learn from the Liturgical calendar by reviewing your parish calendar. Most parishes provide a calendar to parishioners that posts the days of the month indicating the season and the saints.

I invite you to consider why we celebrate the lives of the saints. The Church celebrates the saints for several reasons. First, to rejoice in the grace of God at work in them. When we understand the lives of the saints, we are also challenged and encouraged by their heroic lives. The celebration of the saints is also a reminder of their prayers for us.

When we celebrate the feast of a saint, there are many tools we can use to help us pray and reflect on the life of the saint and benefit from his or her prayer for us. The prayers and readings at Mass and in the Liturgy of the Hours can provide reflection and insight. Reading about the life of the saints can help us learn from their example. When we see the lessons of their lives, we can emulate their virtues and learn how they overcame their faults and failures with God's grace. Their lives will help us learn how other holy men and women aided them in their journey of faith. Often the saints give wonderful examples of charity and compassion. Some of the saints, like Saint Paul and Saint Augustine, give us profound examples of conversion. Still others show us the persistence of prayer, as in the life of St. Monica, St. Augustine's mother.

The Liturgical Calendar is filled with celebrations about Mary. There are many aspects of Mary's life, example, and intercession that are celebrated during the course of the year. There are four solemnities, three feasts, and nine memorials on the annual calendar. Also, on the Saturdays during Ordinary Time (when a feast or memorial of another saint does not occur) an optional memorial of the Blessed Mother may be celebrated. This year, twenty Saturdays of the thirty-four weeks of Ordinary Time permit optional memorials of the Blessed Mother. The prayers and Scripture readings of those Masses and celebrations of the Liturgy of the Hours provide many opportunities to learn and reflect on the life of Mary and her fervent prayer for us.

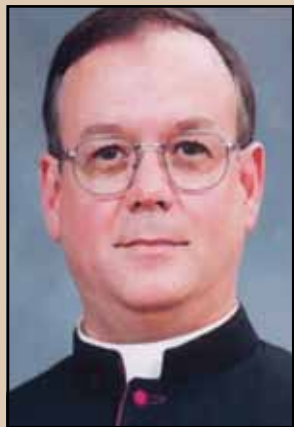
Other saints have left us a wealth of writings that can teach and inspire us. St. Augustine, St. Leo the Great, St. Catherine of Siena, St. Teresa of the Little Flower, to name but a few, have left a treasure trove of writings for our benefit. Two of our more recent saints are even more prolific; Saint John XXIII and Saint John Paul II have given the Church whole libraries of teachings, homilies, and reflections.

One of my favorite saints is St. Anthony. His prayer and preaching, his example, and the devotions that surround him hold so many lessons. I suspect that you may have found his intercession most helpful when you have lost something. I would suggest an even more helpful prayer to him would be that you and I learn how to grow closer to Jesus, as he did.

There are some rules that guide the annual calendar of the Church. You might have noticed that some of your favorite saints or feast days might not be celebrated when they fall on a Sunday in a given year. The Sunday celebration always takes precedence at Mass and the Liturgy of the Hours. As you look at the Liturgical Calendar, you might also notice that some saints are not listed on the universal calendar.

continued on page 24

This issue's guest columnist, Monsignor Robert J. Siffrin, was born on May 26, 1953, to Murna and Robert Siffrin, the oldest of three children. Born and raised in Massillon, Ohio, he attended St. Joseph School and graduated from Central High School in 1971. He attended St. Gregory College Seminary in Cincinnati, Ohio. There he majored in Philosophy and received a BA in Liberal Arts in 1975.



Graduate studies at Mount St. Mary Seminary began in 1975. He received an MA in Sacred Scripture Studies. During the years of Theology, he tutored and taught part-time at St. Rita School for the Deaf. He was ordained a priest on June 23, 1979. His first assignment was at Ursuline High School. He was then appointed associate principal at John F. Kennedy High School in Warren, Ohio. For many years he has served as chaplain for the hearing impaired.

He served the Diocese of Youngstown, Ohio, in a number of capacities; as the Director of Planning for the Diocese and as Chancellor/Vicar for Clergy. He currently serves as Vicar General/Moderator of the Curia. On March 25, 2004, he received Papal Honors and was named a Prelate of Honor with the title Monsignor.

Msgr. Siffrin was elected chairman of the Conference of Slovak Clergy in 2010. The members of the conference support the graduate study of priests from Slovakia in Rome at the Pontifical College of Saints Cyril and Methodius.

MSGR. BEEDA DISTRICT

It was a beautiful summer day as members of the Msgr. Beeda District enjoyed a picnic on Saturday, June 28, 2014, in Sugarloaf, Pennsylvania. District President Anita Gregory hosted the event at her home. Twenty members and several guests attended the function.

The evening was filled with plenty of food, refreshments, and games for the children and everyone to enjoy. Thank you to all our District members who provided us with their special picnic dishes and desserts.

At dusk the children were given red, white and blue glow sticks, necklaces, and bracelets. Over thirty lanterns were lit and sent into the sky as everyone watched them float over the Sugarloaf Valley. A spectacular twenty-one minute fireworks display followed and was enjoyed by all. A special thank you to Branch 60 member Christopher Gregory for setting up and providing the lanterns and fireworks for the picnic. Thank you also to all our members from Branches 39, 60, and 124 who took time to join us for our first District picnic.



Everyone present at the District picnic enjoyed the display of glowing lanterns as they lit up the night sky.



Pictured are those who attended the District's first picnic at the home of District President Anita Gregory.

Branch 213 Celebrates Flag Day at the Ballpark

On Friday, June 6, 2014, LPSCU Branch 213 hosted a group of 18 members and 2 guests at a Scranton/Wilkes-Barre Railriders baseball game in Moosic, Pennsylvania. The Railriders, an affiliate of the New York Yankees, played the Norfolk Tides at an early evening game that was followed up by a beautiful fireworks display.

It was a great evening for a ballgame made even more so by a Railriders' 12-6 victory as four different Railriders clubbed home runs.

During the game, the names of the various groups in attendance were announced and appeared on a large screen over the ballpark. A good time was had by all!



The Seymour family, all members of Branch 213, came out to root for the home team.



Members of Branch 213 cheer the Railriders on to victory.

Time is Running Out!

Members, you only have until December 31st to send in your family recipe to be included in our Convention Cookbook.

The end of the year will be here before you know it!

Why not choose a favorite recipe or two from your time-tested collection and bring it with you to one of the upcoming District or Branch events?

Give it to a Branch/District officer who will see that it gets to us in time for publication in our Convention Cookbook.

Or, if you prefer, you can mail your recipe to:

Margaret A. Ferri
428 E. Frankford Street
Bethlehem, PA 18018

or

e-mail to: cookbook2016@outlook.com

Remember, the deadline

is fast approaching!

Don't delay! Send us your recipe today!

Chelsea Maher Named 2014 Anne (Shinal) Cichy Scholarship Recipient



Chelsea Maher

The LPSCU is pleased to announce that Chelsea Maher of Mine Hill, New Jersey, is the recipient of the 2014 Anne (Shinal) Cichy Memorial Scholarship. She is a member of LPSCU Branch 124, Hazleton, Pennsylvania.

Chelsea, 18, recently graduated from Dover High School in Dover, New Jersey, where she was ranked 21 out of 185 students, putting her in the top 11% of her class. She

was accepted into the New Jersey Stars Program and is beginning nursing studies at the County College of Morris in Randolph, New Jersey.

While at Dover High School, Chelsea's academic curriculum consisted of all honors classes, an AP psychology class, and a college-level biology class. Her extra-curricular activities included playing varsity softball, where she was team captain in her senior year; peer mentoring, where she helped freshmen cope with their entrance into high school; and serving as a Guidance Aide, where she would take a period out of her day to help guidance counselors and the guidance office deliver passes and send out notices. She was also a member of the Key Club and Yearbook Club.

Chelsea belonged to the Campfire Girls where she reached her 13th year of participation.

Throughout her four years of high school, Chelsea worked up to 28 hours a week when it wasn't softball season. She is currently an employee at AMC Theaters and also works as a summer camp counselor for special needs children.

Chelsea's hobbies include softball, camping, kayaking, hanging out with friends, and baking.

The LPSCU is proud of Chelsea's outstanding achievements and accomplishments. She is most deserving of this year's Anne (Shinal) Cichy Memorial Scholarship.

Congratulations, Chelsea! Wishing you continued success at college as you pursue your nursing degree.

PFA Hosts Legislative Luncheon

The Pennsylvania Fraternal Alliance held its annual Legislative Luncheon at the Capitol Building in Harrisburg on June 17, 2014. In attendance at this affair were some thirty fraternal leaders and over one hundred state legislators.

The atmosphere was informal with lunch set up outside the Lt. Governor's Office on the second floor of the Capitol. This allowed our fraternal representatives the opportunity to meet legislators as they exited from their morning session on lunch break. Representing the LPSCU at the luncheon were President Theresa Kluchinski and Secretary-Treasurer Mary Jo Savidge.

President Kluchinski and Secretary-Treasurer Savidge had a chance to speak with Pennsylvania Lt. Governor Jim Cawley and Representative Eddie Day Pashinski of the House 121st Legislative District.



President Theresa Kluchinski and Secretary-Treasurer Mary Jo Savidge (left and second from left, respectively) and other fraternal leaders chat with Pennsylvania Lt. Governor Jim Cawley (third from right).



L-R: President Kluchinski, House Representative Eddie Day Pashinski, and Secretary-Treasurer Savidge.

Slovak Language Classes Offered

The Western Pennsylvania Slovak Cultural Association is once again offering its annual fall Slovak language classes. These popular classes will run every Tuesday evening from September 9-October 8, 2014, from 7:00 to 8:30 p.m. at the Mount Lebanon Library located at 16 Castle Shannon Boulevard in Pittsburgh, Pennsylvania. The tuition is free. Bozena Hilko will be the instructor. To register, call Albina Senko at 412-343-5031 or Joe Senko at 412-531-2990.

In Memoriam

Blessed are they that mourn, for they shall be comforted. — Matthew v.5

Name	Branch	Location
Michaeline Michael	6	Wilkes-Barre, PA
*Regina Tapajcik	6	Wilkes-Barre, PA
Helen A. Glass	7	Exeter, PA
Patronella A. Janinek	8	Jessup, PA
Anna Meritello	9	Mahanoy City, PA
*Leo V. Letoski	9	Swoyersville, PA
*Rev. Joseph Wysocki	19	Swoyersville, PA
*Salome Duoba	21	West Lake, MA
Josephine Meister	24	Windber, PA
Anna Slagle	24	Windber, PA
Emilia Kolba	32	Pana, IL
*Mary D. Kametz	40	Allentown, PA
John R. Cizovsky	42	Pittsburgh, PA
Margaret Kosarik	42	Pittsburgh, PA
Veronica Kostovcik	42	Pittsburgh, PA
Emma Gulla	60	W. Hazleton, PA
John L. Poskus	72	Stratford, CT
Michael Gulvas	76	White Oak, PA
Gregory Poyle	77	Lorain, OH
Emilia Vereb	79	Whiting, IN
Helen Schoenberger	83	Bethlehem, PA
Charles C. Stofko, Sr.	83	Bethlehem, PA
Patricia M. Kibbler	124	Hazleton, PA
Stase T. Kezenius	132	Campbell, OH

Name	Branch	Location
Helen Roman	132	Campbell, OH
*Daniel H. O'Donnell	156	Coaldale, PA
Cazimer V. Encher	158	Chicago, IL
Theresa H. Barzilaski	197	Wilkes-Barre, PA
Bruno Gurenas	197	Wilkes-Barre, PA
Adele Gustas	19	Wilkes-Barre, PA
*Dorothy Hrebenar	197	Wilkes-Barre, PA
Jerome Kuzmick	197	Wilkes-Barre, PA
Alice Maguire	197	Wilkes-Barre, PA
Rev. Dominic Mockevicius	197	Wilkes-Barre, PA
Sally M. Ouellette	197	Wilkes-Barre, PA
Jonas Reiny	197	Wilkes-Barre, PA
Pauline Welsh	197	Wilkes-Barre, PA
Bertha Ukrinas	L0163	Chicago, IL
Vladas Staskus	L0171	Detroit, MI
Amelia Bogliene	L0179	East St. Louis, IL

*Multiple certificates

LPSCU Joins FSNEPA to Commemorate Flag Day at VA Medical Center



President Kluchinski addresses those gathered at a Wilkes-Barre Flag Day celebration.

National President Theresa Kluchinski and National Secretary-Treasurer Mary Jo Savidge joined other fraternal leaders from the Fraternal Societies of Northeast Pennsylvania on June 12, 2014, at the Wilkes-Barre Veterans Medical Center in Wilkes-Barre, Pennsylvania, to participate in a Flag Day ceremony on the 64th anniversary of the Act of Congress proclaiming June 14th as National Flag Day.

President Kluchinski marked the occasion with a Flag Day tribute. In her remarks, she recalled how the first Flag Day was held in 1885 on a wind-swept school atop a glacier-formed hill overlooking rolling farmland in Fredonia, Wisconsin. A 19-year-old school teacher, Bernard J. Cigrand, celebrated that first Flag Day by placing a small flag in a bottle on his desk and taught his students about the history of the flag and recited a ceremonial pledge. His efforts led to a national observance honoring the flag. President Kluchinski thanked all the individuals who have served and continue to serve in our armed forces for their service and sacrifice, for without them we would not be "one nation, under God, indivisible, with liberty and justice for all."

After the presentation of a monetary gift from FSNEPA, games and refreshments were enjoyed by all the veterans in attendance. Everyone was a winner!



LPSCU Branch 213 Matching Fund Project

Benefitting

The Matthew Mursch, Jr. Foundation

Thursday, November 6, 2014 at 6:00 p.m.

Cost: \$36.00 per person
(includes all supplies)

Cross Valley Center
677 N. River Street, Plains, PA

A Gift Card Raffle will also be held!

Seating is limited. Anyone interested in attending must contact Branch 213 Secretary Theresa Kluchinski at 570-829-5410 or cell 570-817-4756 (call or text)

Payment must accompany reservation.

Anyone wishing to donate a gift card may do so by contacting Theresa at the numbers above or by mailing them to Theresa at 446 Mountain Oaks Drive, Laurel Run, PA 18706

Additional information will be provided when reservation is received.

In Memoriam

Mary Ann M. Ackerman, LPSCU Honorary Vice President



Mary Ann Ackerman

LPSCU Honorary Vice President Mary Ann M. Ackerman, 87, died on Monday, July 14, 2014, at St. Luke's Hospice in Lower Saucon Township, Pennsylvania. Born on February 28, 1927, in Bethlehem, Pennsylvania, she was the daughter of the late Stephen G. and Mary O. (Klepper) Fecko. She was the devoted wife of the late Richard T. Ackerman, Sr. They celebrated their 49th wedding anniversary before he passed away in 1997.

Mary Ann graduated from St. Cyril Academy in Danville, Pennsylvania. During her working career, she was employed by B. Braun (Burrone Medical), Connell Funeral Home, Inc., and Glenn E. Moyer, M.D.

Mary Ann was a life-long member of the Ladies Pennsylvania Slovak Catholic Union. She served the LPSCU as National Trustee for eight years and as National Vice President for sixteen years. She retired from office in October 2000, after which the Board named her as Honorary Vice President of the LPSCU. At the time of her death, she was serving her 41st year as Financial Secretary of LPSCU Branch 83 in Bethlehem, Pennsylvania. She was the founding officer of the Lehigh Valley Okres of the LPSCU.

In 2013, Mary Ann was the recipient of both the LPSCU and the Pennsylvania Fraternal Alliance Fraternalist of the Year awards. She was a member of the Cardinal Tomko Chapter of the Slovak Catholic Federation, Bethlehem Township Autumn Club, SS. Simon and Jude Senior Group, and Incarnation of Our Lord Senior Group. She was active in the Miss Pennsylvania Scholarship Organization for 15 years when the organization was domiciled in the Lehigh Valley Area and she was a dedicated fundraiser for Lehigh Valley charities.

Mary Ann was a parishioner of St. Anne's Catholic Church in Bethlehem. She is survived by her four children, Richard T. Ackerman, Jr.; Marilyn Geiger and husband, Craig; Annette Ackerman; and Bernard Ackerman and wife, Carey; her grandchildren, Ricky Ackerman, Jennifer Wood, Douglas Geiger, Jared, Colin and Elizabeth Ackerman; great-grandchildren, Cole and Chase Geiger; Hunter, Carson and Brayden Hardik; and her sisters, Bernadine Pringer, Barbara Bankowski, and Ceil Garland. She was preceded in death by her sister, Ethel Ornosky.

A Mass of Christian Burial was held on Tuesday, July 22, 2014, at 11:00 a.m. at St. Anne's Catholic Church, 450 Washington Avenue, Bethlehem. Visitation was held Monday evening, July 21, at Connell Funeral Home in Bethlehem from 6:00 to 8:00 p.m., and in the church from 10:00 to 11:00 a.m., prior to the Mass. Burial was held at Holy Saviour Cemetery in Bethlehem.

Attending the viewing on Monday were LPSCU national officers, Vice President Anita Gregory, Trustee Dolores Evanko, and Public Relations Director Margaret A. Ferri; former national officers Chuck Simalchik, Mary Ford, and Mary Kacmar, and many members of Branch 83. Attending the Mass were

LPSCU national officers President Theresa A. Kluchinski, Secretary-Treasurer Mary Jo Savidge, Chair of Trustees Mary Ann Ewasko, Trustee Margaret Jollimore, Fraternal Activities Director Ceil Gaughan, Public Relations Director Margaret A. Ferri and her husband, John, former Public Relations Director Mary Ford, and Justine Wesnak, member of Branch 38 and founding president of the Cardinal Tomko Chapter of the Slovak Catholic Federation. The national officers and members attended the burial service and acted as honor guards when the casket was carried from the hearse to the grave site.

The officers and members of the LPSCU are deeply saddened at the loss of our beloved fraternal sister, Mary Ann Ackerman. Her dedication as an officer on the national, local, and district levels is a testament to her love for the LPSCU. She not only served her offices with respect, intelligence, and integrity, but she lived for the LPSCU and her Slovak heritage. May we all be inspired by the remarkable legacy that she left to our LPSCU and the Slovak community. We express our sincere sympathy to Mary Ann's family, members of Branch 83, and the Lehigh Valley Okres. May she rest in peace.

Member Receives First Communion

On Saturday, May 3, 2014, Connor Quinn Tomasic of LPSCU Branch 52 received his First Holy Communion at Saint Michael's Parish Church in Ridge, Maryland.

Connor, along with nineteen other youngsters, received the Communion rite which was presided over by Rev. Peter Giovanoni, parish pastor, at a 10:00 a.m. Mass celebration.

Connor, his parents, his two older brothers, Brendan and Ryan, and his two older sisters, Nicole and Megan, reside in Dameron, Maryland. The entire family are members of LPSCU Branch 52, North Braddock, Pennsylvania.



Connor is flanked by his paternal grandparents, Carol and James Tomasic (Branch 52 Secretary) of North Hills, Pittsburgh (left) and maternal grandparents, James and Joan Ruffing of Youngstown, Ohio (right).

Minutes of the Executive Finance Committee

July 24, 2014 – Home Office, Wilkes-Barre, Pennsylvania

President Theresa Kluchinski called the meeting to order and offered a prayer, followed by the Pledge of Allegiance.

Attendees: Theresa Kluchinski, president; Anita Gregory, vice president; Mary Jo Savidge, secretary-treasurer; and Mary Ann Ewasko, chairperson of trustees.

The committee reviewed and accepted the Minutes from the April 24, 2014, Executive Finance Committee meeting.

Correspondence/Requests

The committee acknowledged all the correspondence read and approved the following:

New Jersey-New York Fraternal Alliance requesting an ad in the 81st Annual Convention program book. *Approved full page ad at \$100.00.*

Pennsylvania Fraternal Alliance requesting a donation for the charitable project, St. Joseph's Center. *Approved \$100.00.*

National Slovak Society is requesting an ad in the 36th Quadrennial Convention program book. *Approved a full page ad at \$150.00.*

Western Pennsylvania Slovak Day Association requesting

an ad for the 91st Annual Slovak Day program book. *Approved a full page ad at \$150.00.*

Dolores Sakal with the Western Pennsylvania Slovak Day Association is requesting a donation of gift cards for the 91st Annual Slovak Day. *Approved two \$25.00 gift cards.*

John Holy requesting an ad for the 37th Slovak Heritage Festival program book. *Approved a half page ad at \$75.00.*

Financial Statement

The committee reviewed the following checking accounts for April, May, and June 2014: M&T Bank – General Operating Account, the Morgan Stanley Smith Barney Checking Account and the Home Office – Branch Deposit Account. The committee reviewed the Profit and Loss/Balance Sheet for April, May, and June 2014.

Bond/Stock/Pension Portfolio

The committee was provided and reviewed all activity from April, May, and June 2014 including CDs, Common Stocks, Preferred Stocks, and International Bonds. The Employee Retirement Plan was also reviewed.

Home Office

Secretary-Treasurer Savidge reported on the following: payment to a minor beneficiary; server; unknown addresses; and scanning project.

Budget

The budget was provided and reviewed.

Meeting Dates

The next meeting will be held Thursday, October 23, 2014. There being no further business, the EFC adjourned.

Respectfully submitted,

Mary Jo Savidge

National Secretary-Treasurer

Fraternalist of the Year Makes Donation

Sylvia Goda recently presented her pastor, Reverend Michael Harcarik, with a check for \$100, a gift she received as the LPSCU's 2014 Fraternalist of the Year. Sylvia matched that amount with her own funds, requesting that the \$200 be used to provide food for the needy of her parish, Prince of Peace on Pittsburgh's South Side. Father Harcarik was most appreciative of the generous donation.



Pictured L-R are LPSCU Fraternalist of the Year Sylvia Goda, Reverend Michael Harcarik, pastor of Prince of Peace Parish of South Side Pittsburgh, and Deacon Frank Szemanski.

Member Cheers for Catholic School

Rachel Bowman (standing at left) is shown with her North-Side Catholic Junior Varsity Cheerleading squad. When this photo was taken, Rachel was a 6th grader at Northside Catholic School and proudly participated in numerous Diocesan cheerleading competitions in March 2014. Rachel is a member of LPSCU Branch 64, Pittsburgh, Pennsylvania. She is the daughter of Mary Ann Bowman, who is also a member of Branch 64.



Slovak Catholic Federation 2014 Annual Appeal Mid-Year Report

Since 1978, the Slovak Catholic Federation has been conducting the SS. Cyril and Methodius Appeal which begins each year in the month of February during the closest weekend to the Feast of SS. Cyril and Methodius. In its 36th year, this Appeal has primarily been taken up in U.S. parishes of Slovak heritage. This year's Appeal continues during the entire calendar year 2014.

At this mid-year point in the 2014 collection, I can report that **\$13,069.41** has been collected. This is roughly \$2,000 less than last year's Mid-Year Report. The final total of 2013's Annual Appeal was **\$39,678.41**.

Funds derived from this Annual Appeal assist the Church in Slovakia by supporting the training mission of the Pontifical Slovak College of SS. Cyril and Methodius in Rome, Italy (formally known as the Slovak Institute). In addition, funds are distributed to those Religious communities of both men and women that share a counterpart which belongs to the Slovak Conference of Religious. These communities are the Vincentian Sisters of Charity (Ruzomberok), Dominican Sisters (Dunajska Luzna), School Sisters of St. Francis (Zilina), Daughters of St. Francis (Bratislava-Prievoz), Byzantine Catholic Sisters of St. Basil the Great (Secove and Presov), Franciscan Friars Minor (Bratislava), and House of St. Benedict (Bacurov).

As we are all very much aware, the days of "ethnic parishes" are fast becoming a thing of the past. More and more Slovaks reside in different parts of the country and no longer claim to belong to a parish of Slovak heritage. For this reason, many Slovaks may not have the opportunity to hear about, let alone participate in this Annual Appeal. If it were not for the Slovak Catholic fraternal societies and their publications, communication to American and Canadian Slovaks would not be possible.

In recent years, we have seen an increase in individual donations apart from parish collections. Also, most of the Slovak fraternal societies have also been making contributions to this collection through their National Boards of Directors, along with a number of local branches, wreaths, assemblies, and lodges.

Various Slovak groups will be holding summer picnics, golf outings, national conventions, and other fraternal gatherings in the coming months. I would ask that during such events, consideration be given to kindly taking up a collection in support of the Slovak Catholic Federation Appeal. All donations are tax deductible.

Individuals and groups are all welcome to make a donation to this Appeal. Make all checks payable to: Slovak Catholic Federation and note that they are for the Annual Appeal. Send directly to SCF National Secretary-Treasurer Dolores Evanko, 173 Berner Avenue, Hazleton, PA 18201.

I pray that Almighty God reward all of us who participate in the support of the Church in Slovakia through the Slovak Catholic Federation's 36th Annual SS. Cyril and Methodius Appeal. Thank you for your generosity.

Fr. Andrew Hzovdovic, *Annual Appeal Chairman*

Pittsburgh District Members Join Hands

For this year's Join Hands Day project, Pittsburgh District members rallied around the patients at Kane Regional Hospital in Hazelwood, Pennsylvania on May 29, treating them to an afternoon of ice cream and bingo. The volunteers collected about 200 bingo prizes for the event. Gwen Baugh, volunteer coordinator at Kane, expressed her appreciation on behalf of the hospital administration for the Pittsburgh District's visit.



Pictured L-R are Ed and Elva Silay, Helen Lorinc, Dolores Sakal, Margaret Joschak, Gwen Baugh (seated), Janice Mathews, and Sylvia Goda.



Some of the 200 bingo prizes Pittsburgh District members collected for their Join Hands Day project.



Pittsburgh District member Helen Lorinc prepares to call bingo numbers for the patients at Kane Regional Hospital.

Dear Mrs. Kluchinski,

I just wanted to thank you and the LPSCU so much for the opportunities and scholarships I have received. I promise it will go to good use for college, as that is my main concern right now. Thanks for writing my letter of recommendation as well; it is much appreciated.

Sincerely,
Robert J. Kupsho
 Branch 60
 W. Hazleton, PA

hope this satisfies the requirements necessary for receiving the award payment.

Again, thank you for the consideration and generously selecting me as a recipient of the 2014 Scholarship Award. I appreciate the time you took to review my application and I look forward to using the award to help fund my education.

Sincerely,
Austin Nosal
 Branch 64
 Pittsburgh, PA

Ladies PA Slovak Catholic Union,

Thank you so much for selecting me as a recipient of the 2014 Scholarship Award. I'm honored that you chose to help me move forward in my academic career and I look forward to sharing my future success with you.

Love,
Mary Gaughan
 Branch 38
 Whitehall, PA

More Letters on page 14

Dear Scholarship Committee of the Ladies Pennsylvania Slovak Catholic Union,

Thank you very much for selecting me as a recipient of the Ladies Pennsylvania Slovak Catholic Union scholarship. I feel honored to have received this and I greatly appreciate your contribution to my college education. I am grateful to know my heritage and for being part of an organization that promotes our heritage.

May God bless you all on your work and for the continued success of the LPSCU.

Thanks so much.

Sincerely,
Margaret Ragan
 Branch 7
 Exeter, PA

Dear Mrs. Savidge,

Thank you so much for presenting me with the Anne (Shinal) Cichy Award. This money will go to great use as I begin to pursue my nursing career. I couldn't be grateful enough.

Sincerely,
Chelsea Maher
 Branch 124
 Hazleton, PA

Dear Mrs. Kluchinski,

I would like to thank you and the Board of Directors for choosing me as a recipient of the Ladies Pennsylvania Slovak Catholic Union 2014 Scholarship Award.

As you may know, I will be a sophomore at Penn State University starting in August. Given that, I have enclosed a copy of my student schedule as proof that I am enrolled for the fall semester as a full time undergraduate student. I have also enclosed a copy of my student ID. I

LPSCU 2nd Quarter Report

Assets	2nd Quarter 2014	2nd Quarter 2013
Investments.....	\$ 15,210,923.00	\$ 14,543,418.00
Certificate of Deposit.....	\$ 96,000.00	\$ 96,000.00
Cash on Deposit	\$ 237,424.00	\$ 479,136.00
Mortgage Loans	\$ -	\$ -
Real Estate Owned	\$ 129,048.00	\$ 128,999.00
Other Assets	\$ 49,275.00	\$ 59,605.00
Totals	\$ 15,722,670.00	\$ 15,307,158.00
Liabilities & Fund Balance	2nd Quarter 2014	2nd Quarter 2013
Fund Balance.....	\$ 4,123,958.00	\$ 3,904,743.00
Interest Maintenance Reserve	\$ 157,772.00	\$ 199,747.00
Amt. Retained as Trustee.....	\$ 125,362.00	\$ 106,625.00
Aggregate Reserve-Life Certificates.....	\$ 10,833,022.00	\$ 10,561,978.00
Other Liabilities	\$ 482,556.00	\$ 534,065.00
Totals	\$ 15,722,670.00	\$ 15,307,158.00
Revenues	2nd Quarter 2014	2nd Quarter 2013
Premium Income	\$ 178,895.00	\$ 93,133.00
Investment Income.....	\$ 364,681.00	\$ 391,740.00
Income - Other	\$ 18,225.00	\$ 19,765.00
Totals	\$ 561,801.00	\$ 504,638.00
Expenses	2nd Quarter 2014	2nd Quarter 2013
Death Claims	\$ 137,904.00	\$ 159,841.00
Endowments	\$ 7,056.00	\$ 4,964.00
Cash Surrenders.....	\$ 44,813.00	\$ 30,081.00
Dividends	\$ -	\$ -
Increase in aggregate reserves.....	\$ 135,000.00	\$ 70,000.00
Commissions (new and renewals).....	\$ 1,470.00	\$ 5,786.00
General Operating Expenses	\$ 162,263.42	\$ 168,997.06
Officers and Committee Expenses	\$ 12,720.49	\$ 6,401.14
Actuarial/Accounting Expense.....	\$ 56,380.00	\$ 59,500.00
Investment Mgt. Fee	\$ 14,157.06	\$ 13,686.83
Official Publications.....	\$ 22,327.19	\$ 34,314.80
Travel Expense	\$ 2,988.73	\$ 1,727.55
Bureau and Association Dues	\$ 5,035.00	\$ 3,825.00
Donations.....	\$ 5,105.00	\$ 3,940.00
Scholarships	\$ -	\$ (40.00)
Fraternal Activities.....	\$ 6,135.11	\$ 4,589.62
Insurance Taxes, Licenses & Fees.....	\$ 19,341.00	\$ 22,533.00
Sub Total	\$ 632,696.00	\$ 590,167.00
Net Gain/Loss From Operations.....	\$ (70,895.00)	\$ (85,529.00)
Net Realized Capital Gain (Loss).....	\$ 11,920.00	\$ 60,494.00
Totals	\$ (58,975.00)	\$ (25,035.00)

2014 Catholic High School Award Recipients



Anthony Craig Baggest
Senior
Bethlehem Catholic High School
Bethlehem, Pennsylvania
*Member of Branch 130
Bethlehem, Pennsylvania*

Taylor Meister
Senior
La Salle High School
Cincinnati, Ohio
*Member of Branch 180
Youngstown, Ohio*



Ashley Marie Robinson
Freshman
Charlotte Catholic High School
Charlotte, North Carolina
*Member of Branch 90
Johnstown, Pennsylvania.*



Lehigh Valley Okres to Hold Matching Fund Event

In conjunction with the LPSCU Matching Fund Program, members of the Lehigh Valley Okres are planning to hold a themed gift basket raffle for the benefit of the Allentown Diocesan Soup Kitchen located at 177 Chew Street, Allentown, Pennsylvania. The raffle will be held at the Lehigh Valley Okres's Holiday Luncheon on Sunday, December 7, 2014, beginning at noon at the Best Western Lehigh Valley Conference Center in Bethlehem, Pennsylvania.

We ask our Lehigh Valley area LPSCU members to support this worthwhile project by either donating a themed gift basket or by attending the Holiday Luncheon and purchasing raffle tickets. For further information, call Marge Ferri at 610-866-8945 or Ceil Gaughan at 610-433-4610.



LPSCU Members Celebrate Flag Day at Ball Game

On Friday, June 6, 2014, LPSCU members attended the Scranton/Wilkes-Barre Railriders baseball game at PNC Field in Moosic, Pennsylvania. The Scranton/Wilkes-Barre Railriders, an affiliate of the New York Yankees, played the Norfolk Tides at 7:05 p.m. with a dazzling fireworks display after the game. The Railriders won the game 12-6, as four different Railriders scored home runs on the evening.

During the game, the name of the Ladies Pennsylvania Slovak Catholic Union was announced and appeared on a large screen over the ballpark. Everyone agreed it was a great evening of baseball and camaraderie.



Bernard Shinal with Railriders mascot "Quills," everyone's favorite porcupine!



National President Theresa Kluchinski (second from left) and Secretary-Treasurer Mary Jo Savidge (second from right) enjoy chatting with other LPSCU members.



National Officers Anita Gregory (seated at right) and Dolores Evanko (seated, second from right) enjoy the game with other LPSCU members.



SLOVAK DAY CELEBRATED



The 91st Slovak Day at Kennywood Park on July 18, 2014, was a huge success, thanks in large part to the hard working committee members who contributed their time and effort during the months leading up to the event. Of course, the cool, dry weather contributed much to making the day such a success by bringing out a large crowd.

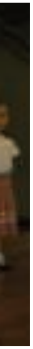
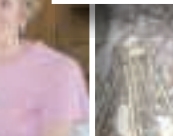
Everyone enjoyed the delicious home-made food, and the beautiful Slovak national costumes and memorabilia displayed by the Pittsburgh Slovaks and Pittsburgh Area Slovaks (PAS). Branch 42 member Sylvia Goda displayed needlepoint pictures sewn by her aunt in what was then Czechoslovakia in the early 1900s, as well as Czech photos of her aunts, uncles, and great-grandmother. The LPSCU table offered information on various policies, children's fingerprint kits, and many useful giveaways.

Highlighting the day was the Eucharistic celebration. Rev. Joseph Grosko, president of the Western Pennsylvania Slovak Day Committee,

introduced the celebrant of the Mass, Most Rev. David A. Zubik, Bishop of the Pittsburgh Diocese. Most Rev. Lawrence E. Brandt, Bishop of the Greensburg Diocese, spoke very inspiring words.

Rev. Grosko welcomed the clergy and deacons of the Pittsburgh, Greensburg and Altoona-Johnstown dioceses.

Rev. Grosko, Slovak Day Committee General Chairperson Dolores Sakal, and the entire Western Pennsylvania Slovak Day Committee thank everyone involved and ask God to bless them for their willingness to help make the day a success.



Ladies Pennsylvania Slovak Catholic Union

Minutes of the Board Conference Call Meeting

June 14, 2014

Call to Order – Prayer

President Theresa Kluchinski called the meeting to order at 10:10 a.m. and offered a prayer.

Roll Call

All Board members were present.

Welcome Remarks

President Kluchinski thanked everyone for attending.

Approval of Agenda/Minutes

The agenda for this meeting was approved, along with the Minutes from the March 21-22, 2014, meeting.

Correspondence/Requests

Secretary-Treasurer Mary Jo Savidge read all correspondence received. The following request was approved:

- ❖ Slovak Heritage Society of Northeastern Pennsylvania

Financial Report

Board members were provided and reviewed the following information:

- ❖ Quarterly Statement March 2014
- ❖ Month End Balance Sheet/Revenue and Expense Statement
- ❖ Summary Market Value 2014
- ❖ Transaction Summary Report
- ❖ Pension
- ❖ CPA Audit/Recommendations
- ❖ Budget
- ❖ American Fraternal Alliance Analysis 2013

Unfinished Business

Liberty Mutual – The Board was provided a one page announcement of the new benefit that will be offered to our members from Liberty Mutual Car and Home Insurance. The announcement will appear in the July/August *Zornicka*.

Home Office

Secretary-Treasurer Savidge reported on the following:

- ❖ Scanning
- ❖ Updating of members' folders
- ❖ Unknown addresses
- ❖ Unclaimed

The Board was provided and reviewed the Report of the Pennsylvania Insurance Department Examination

Reports

The Board was provided reports from the following:

- ❖ President Kluchinski on the Fraternal Societies of Northeast Pennsylvania Seminar and the American Fraternal Alliance Mid-Year Meeting.
- ❖ Secretary-Treasurer Savidge on the Fraternal Societies of Northeast Pennsylvania Seminar and the American Fraternal Alliance Mid-Year Meeting.
- ❖ Trustee Margaret Jollimore on the Fraternal Societies of Northeast Pennsylvania Seminar.

Officers' Reports

The following quarterly reports were provided and reviewed:

- ❖ Vice President – Anita Gregory
- ❖ Chairperson of Trustees – Mary Ann Ewasko
- ❖ Trustees – Dolores Evanko, Joan Hladek, and Margaret Jollimore
- ❖ Fraternal Activities Director – Cecilia Gaughan
- ❖ Public Relations Director – Margaret Ferri

Committee Reports

The Board was provided and reviewed the following reports:

- ❖ Public Relations Director – Margaret Ferri
- ❖ Fraternal Activities Committee – Chairperson Cecilia Gaughan
- ❖ Cookbook Committee – Chairperson Margaret Ferri
- ❖ Fraternalist of the Year Committee - Chairperson Margaret Ferri
- ❖ Educational Committee – Chairperson Joan Hladek
- ❖ Campaign Committee – Chairperson Dolores Evanko
- ❖ Youth Achievement Award Committee – Chairperson Anita Gregory

New Business

The Board reviewed information on the following:

- ❖ Annuity Rate
- ❖ Branch Deposit Rate
- ❖ Catholic Grade School Award Proposal

Calendar of Events

The Board was provided and reviewed the calendar of events for the remainder of 2014 and 2015.

Internal Audit Procedures

Chairperson of Trustees Ewasko provided the Internal Audit Procedures for the following:

- ❖ Canceled Checks
- ❖ Cash Surrenders
- ❖ Certificate Loans

Discussion occurred and changes were made to the procedures. There being no further business, the meeting was adjourned.

Respectfully submitted,

Mary Jo Savidge

National Secretary-Treasurer

Letters

Dear Members,

I just want to thank you so much for the scholarship. I appreciate it very much.

Sincerely,

Richard Daniel Kinney, Jr.

Branch 6, Wilkes-Barre, PA

Ladies Pennsylvania Slovak Catholic Union,

Thank you very much for choosing me as a 2014 Scholarship Award Recipient. I will use the funds wisely. Enclosed is my required proof of deposit for fall 2014. Thank you.

Katelyn Donohue

Branch 130, Bethlehem, PA

Pittsburgh District Celebrates LPSCU's 115th Anniversary

In honor of the LPSCU, the Pittsburgh District hosted a 115th anniversary Mass and Luncheon on June 29, 2014, at St. Maximilian Kolbe Parish in Homestead, Pennsylvania. The event began with Holy Mass celebrated by Rev. Joseph R. Grosko, pastor of Holy Trinity Parish, West Mifflin, Pennsylvania. He was assisted by altar server and Branch 76 member David Palcsy. National President Teresa Kluchinski and National Secretary-Treasurer Mary Jo Savidge joined in the celebration and carried the gifts to the altar during the service.

After the liturgy, the 40 members and three guests in attendance enjoyed a delicious lunch that was prepared and served by Rev. Daniel Sweeney, pastor of St. Maximilian Kolbe,

and his parishioners. Slovak songs were played by entertainers George Batyi and Greg Sejka.

During the luncheon, President Kluchiski and Secretary-Treasurer Savidge presented the LPSCU's 2014 Fraternalist of the Year Award to Sylvia Goda. Sylvia thanked all those present and expressed her gratitude for everyone's volunteer efforts, not only on behalf of the LPSCU, but in their church and community as well.



SS.C.M. Sisters Celebrate Jubilees

The Sisters of Saints Cyril and Methodius in Danville, Pennsylvania, recently celebrated the Jubilees of some of their members. The celebration included a Mass in the Basilica of Saints Cyril and Methodius, followed by a dinner to which the friends, family, and Community members of the celebrants were invited.



Celebrating anniversaries were: Row 1: Sister John Vianney Vranak (60 years); Row 2, L-R: Sister Susan Polchin (65 years), Sister Maria Theresa Hronec (55 years), Sister Paulette Lendacky (65 years), Sister Marilyn Pitonak (60 years), and Sister Georgene Luther (65 years); Row 3, L-R: Sister Philothea Fabian (50 years), Sister Judy Therese Holler (20 years), Sister Teresa Urda (50 years), Sister Roseanne Kmetz (60 years), Sister Irene Rose Kmetz (60 years), and Sister Thomas More Dzurnak (50 years); Row 4, L-R: Sister Joseph Therese Pohorenc (55 years), Sister Michael Ann Orlik (45 years), Sister Mary Beth Makuch (45 years), Sister Suzanne Duzen (45 years), and Sister Sara Swayze (45 years).

2014 Midwest Slovak Pastoral Seminar Set

The 2014 Midwest Slovak Pastoral Seminar, under the auspices of the Slovak Catholic Federation, will take place on Sunday, September 21, 2014, at the Calumet College of St. Joseph, at 2400 New York Avenue in Whiting, Indiana. Attendees will gather at 1:00 p.m. for a delicious lunch catered by Steve's Lounge of Hegwisch. Afterward, Msgr. Joseph Semancik will speak about the life and legacy of Bishop Andrew G. Grutka, the first bishop of the Diocese of Gary, Indiana, who was very proud of his Slovak-American heritage. Attendees will then tour the Bishop Grutka Memorial Museum at the college.

Cost of the seminar and luncheon is \$20.00. For more information, call John Jurcenko at (773) 763-0810 or Geri Hletko at (708) 387-7812.

Robert Tapak Magruder
Seminar Publicist

Pitt Slovak Studies Program to Host 24th Slovak Festival

On Sunday, November 2, 2014, from 1:00-5:00 p.m., the Slovak Studies Program will sponsor the 24th Annual Slovak Heritage Festival in the Commons Room of the Cathedral of Learning on the University of Pittsburgh campus, Oakland, Pennsylvania. This festival was conceived by a group of Pitt students who wanted to share their interest in the Slovak and American Slovak culture with the local community. The festival will be the culmination of much hard work, effort, and time on behalf of all of the students. They do it exclusively on a volunteer basis to help promote their Slovak heritage.

The preliminary line-up for the festival includes lectures on the history of Slovak immigration and genealogy, folk art, and the Slovaks in World War I. Performances will include PÁS (Pittsburgh Area Slovaks), Pittsburgh Junior Slovaks, and Pittsburgh Slovaks, and Helene Cincebeaux's Parade of *Krojs* (Slovak folk costumes). There will be Slovak-related displays, ethnic food, and folk vendors. Admission is free.

Visit: <http://www.pitt.edu/~votruba/currentinfo/currentinfo.html> for more information as it's available.

Plan Now to Order Your Christmas Oplatky

Oplatky, the traditional Slovak Christmas wafers, will be available this holiday season from Jankola Library. Orders will be accepted from October 20 until December 19, 2014. The *Oplatky*, five per package, are thermal-sealed and can be purchased for \$4.00 per pack. In addition, the minimum cost of shipping and handling is \$5.75 and upwards, depending upon the number of packets ordered and the prevailing cost of Priority Mail. Orders can be customized to meet your needs. Checks should be made payable to **Jankola Library** and must accompany your order.

For more information or to place an order, contact Sister Catherine Labouré Bresnock, SS.C.M., at 570-275-5606 or write to Jankola Library and Slovak Museum, 580 Railroad Street, Villa Sacred Heart, Danville, PA 17821-1698.

Cooking Corner

CHICKEN AND RICE CASSEROLE

6 chicken breasts (halves), boneless and skinless	8 oz. sliced mushrooms
1 can cream of celery soup	1 pkg. onion soup mix
1 cup water	1 cup orange juice
1 tsp. Worcestershire sauce	1 Tbsp. butter
	1½ cup brown rice

Mix all ingredients, except chicken, in an 8½ x 11 inch roasting dish. Place chicken, breast side up, over mixture. Bake at 350 degrees for 1 hour. Makes 6-8 servings.



ZORNICKA

Christopher Robbins Graduates from Bedford High School



**Christopher
Robbins**

Christopher T. Robbins, a member of LPSCU Branch 52, graduated this past spring from Bedford High School in Bedford, Pennsylvania. He is attending Allegheny College of Maryland this fall to study computer technology.

Christopher was very active both in school activities and outside pursuits. He was a 4-year member of the marching band, playing percussion instruments including snare drums, timpani, and crash cymbals. He was also a member of the Technology Students Association, winning awards in state

competition on home renovations through computer design.

Christopher was deeply involved with the Bedford Sportsman Club for over eight years, becoming responsible for implementing trap shooting competition for the Amateur Trapshoot Association.

Christopher is the son of Charles and Rita Fabyanic Robbins and the grandson of Al and Helen Harcarik Fabyanic. He resides with his parents and sister, Rachael, in Everett, Pennsylvania.

The LPSCU congratulates Christopher on his high school graduation and wishes him continued success in his educational endeavors.

Fraternal Societies of Greater Pittsburgh Presents Annual Seminar

The Fraternal Societies of Greater Pittsburgh's ongoing educational seminar "Industry Developments" presented by Bruce & DePersis was held May 22 and 23, 2014, at the Embassy Suites Hotel in Pittsburgh, Pennsylvania. Representatives from the LPSCU were National President Theresa Kluchinski, National Secretary-Treasurer Mary Jo Savidge, and Pittsburgh District President Dolores Sakal.

The day-long seminar was packed full of information and included presentations on the following:

- 2013 Results and Emerging Issues
- LOMA/Branding
- Elder Law
- Fraternal Activities
- Pennsylvania Insurance Department Updates
- PBR/RBC
- Investment Review
- Governance
- Illinois & NAIC/Fraternal Benefit Law Revision
- Fraternal Index

Friday's session was an open forum round table between the attendees, Joe Annotti, president and CEO, American Fraternal Alliance and Annette Szady, CPA, Pennsylvania Insurance Department.

A Family Tradition

Standing beside their traditional soup creations are Mary Ann Kaylor, Mary Ann Bowman, Helen Lorinc, and Rachel Bowman (in front), all members of LPSCU Branch 64, Northside Pittsburgh, Pennsylvania. Mary "Baba" Lorinc brought the tradition to her Northside home from Slovakia in 1938. Starting at her home on Beldale Street, "Baba" continued to make sour mushroom soup, sour bean soup, bobalky, and pirohy for 70 years until her death in March 2008. Granddaughter Mary Ann Bowman, under the watchful eye of Helen Lorinc, is proudly carrying on the tradition.



NJ-NY Fraternal Alliance Celebrates Flag Day

Directors of the New Jersey-New York Fraternal Alliance celebrated Flag Day while attending a scheduled meeting of the Alliance this past June. Attending the meeting were LPSCU National President Theresa Kluchinski, past president of the Alliance, and LPSCU Secretary-Treasurer Mary Jo Savidge, who is a current director of the Alliance.

The meeting was held at the Golden Nugget in Atlantic City, New Jersey, which is also the venue for the Alliance's Annual Meeting in October. Pictured below are all those current and past officers and directors of the Alliance in attendance.



Alexander J. Cerra Graduates from High School



Alexander Cerra

Alexander J. Cerra graduated this past spring from Williamsville North High School in Buffalo, New York. This fall, he began classes at the State University of New York in Brockport, New York, to pursue a major in Bio-chemistry.

Alex was very active in sports throughout all four years of high school, participating in wrestling and the high jump in track and field. He also played stand-up bass in numerous groups including the Symphonic Orchestra, Wind Ensemble, and Concert Orchestra. Also of note is that he will very soon attain the rank of Eagle Scout.

Alex is the son of Kenneth and Dawn Polansky Cerra. He is the grandson of Erwin and Marie Fabyanic Polansky and the great-grandson of Al and Helen Harcarik Fabyanic. Alex, his parents, and his sister, Claire, reside in Williamsville, New York. The siblings and their mother, Dawn, are all members of LPSCU Branch 52, North Braddock, Pennsylvania.

The LPSCU congratulates Alexander J. Cerra on his graduation from high school and wishes him much success in his future educational endeavors.

Pennsylvania Fraternal Alliance Presents Legislative Award

The Pennsylvania Fraternal Alliance Legislative Committee recently presented the 2014 Legislative Award to Representative Nicholas Kotik, from the 45th Legislative District in Allegheny County. Representative Kotik has been a member of the Pennsylvania House of Representatives since 2003, and serves on the House Insurance Committee, Consumer Affairs Committee, Liquor Control Committee, and Committee on Ethics. Representative Kotik is also First Vice President of the Pennsylvania Fraternal Alliance Board of Directors.



Pictured with Representative Kotik are LPSCU National Secretary-Treasurer Mary Jo Savidge (left) and LPSCU National President Theresa Kluchinski (second from left), along with other fraternal leaders.

Calendar of Events

continued from page 2

- 19** — Reverend Dianiska District Meeting at North End Slovak Club, North Main Street, Wilkes-Barre, Pennsylvania, beginning at 1:00 p.m. Branch 214 will host. Members are asked to bring cleaning supplies to donate for our "Make a Difference Day" project.

NOVEMBER

- 6** — LPSCU Branch 213 is holding an Art & Wine Matching Fund Project with Gift Card Raffle to benefit the Matthew Mursch, Jr. Foundation at Cross Valley Center, 677 N. River Street, Plains, Pennsylvania, at 6:00 p.m. Seating is limited so reserve ASAP by calling Theresa Kluchinski at 570-829-5410 or 570-817-4756. *See page 6 for more details.*
- 20** — **Deadline to submit articles for January/February 2015 Zornicka.**
- 24** — 24th Slovak Heritage Festival in the Commons Room of the Cathedral of Learning, University of Pittsburgh's Oakland Campus, from 1:00-5:00 p.m. Sponsored by the Pitt Slovak Studies Program, the festival includes lectures, Slovak dance performances, displays, ethnic food, and folk vendors. Admission is free.
- 30** — Pittsburgh District Christmas Party, Westwood Golf Club, West Mifflin, Pennsylvania, beginning at 1:00 p.m. Please contact your Branch Secretary to make a reservation.

DECEMBER

- 7** — Lehigh Valley Okres Holiday Luncheon at the Best Western Lehigh Valley Conference Center, Routes 22 and 512, Bethlehem, Pennsylvania, starting at noon with a punch reception followed by luncheon at 12:30 p.m. A Matching Fund Raffle will be held at this event. (*See page 11 for more details.*) For reservations, call Marge Ferri (610-866-8945) or Ceil Gaughan (610-433-4610) before November 20.
- 13** — LPSCU Telephone Conference Meeting
- 31** — Deadline to submit a family recipe for our LPSCU Convention Cookbook. *See page 21 for details.*

New Insurance Issued

Branch	Branch Representative	May/June 2014	Year-to-Date Total
52	James Tomasic	\$ 2,000.00	\$ 14,000.00
130	Margaret Ferri	\$ 20,000.00	\$ 20,000.00
156	Joan Ellen Frendak	\$ 10,000.00	\$ 10,000.00
*159,62,197	Home Office	\$ 25,000.00	\$ 92,000.00
		\$ 57,000.00	\$ 136,000.00

**Sold through Home Office, not included in the Campaign*



UTILIZATION REPORT

	For June 2014	Year-to-Date 2014
Prescriptions Filled:	14	94
Normal Retail Pricing:	\$ 868.68	\$ 5,528.79
Discount Program Pricing:	\$ 508.56	\$ 2,419.84
Total Dollars Saved by LPSCU Cardholders:	\$ 360.12	\$ 3,108.95
Average Saved per Discounted Prescription:	\$ 36.01	\$ 41.03
Overall LPSCU Discounted Prescription Savings:	55.67%	61.41%

June 2014 was an excellent savings month for our ScriptSave® card members. Our group's discounted prescription savings for June 2014 amounted to 55.67%. With our group's 2014 year-to-date discounted prescription savings averaging 61.41%, or \$41.03 per discounted prescription, it's easy to see how our members benefit from the program every day. During these tough economic times, a ScriptSave® card will provide savings to you on your prescriptions.

The ScriptSave® Prescription Savings Program is available at **NO COST** to you. There are **no monthly or ongoing fees, no limits on usage, and no income or age restrictions.** Your entire household can use the card to receive instant savings on brand name and generic prescriptions at over 62,000 participating pharmacies nationwide.

If you do not have health insurance coverage, use the ScriptSave® card for any brand name or generic prescription you or a family member pays for out-of-pocket. If you have health insurance coverage, use the ScriptSave® card for everyone in your household who is not insured and for any prescriptions that are excluded by Medicare Part D law or drugs not covered by your health insurance. In addition to prescription savings, the ScriptSave® card also provides savings on vision and Lasik, hearing, diabetic supplies, lab testing, chiropractic, X-rays and imaging, fitness, safety, and medical supplies, and gym memberships.

If you do not have a ScriptSave® card, you may enroll online by visiting www.scriptsave.com and log-in with Group #S1000. On that web site, you can also find a participating pharmacy near you, look up drug pricing, and view the Preferred Medications List, health information, and more. Any LPSCU member (including the membership of LCA) can receive a ScriptSave® card at no cost. If you do not have access to a computer to apply for a card, call the Home Office and the Home Office will apply for a ScriptSave® card for you.

Discounts are available exclusively through participating pharmacies. The range of the discounts will vary depending on the type of provider and services rendered. This program does not make payments directly to providers. Members are required to pay for all health care services. You may cancel your registration at any time or file a complaint by contacting Customer Care. This program is administered by Medical Security Card Company, LLC (MSC) of Tucson, AZ.

Nicole M. Tomasic Graduates Great Mills High School

Nicole M. Tomasic, a member of LPSCU Branch 52, graduated this past spring from Great Mills High School, Great Mills, Maryland. She recently began studies at the College of Southern Maryland in Saint Mary's Parish, Maryland, to pursue computer engineering and design.

While in high school, Nicole lettered in varsity field hockey and also played volleyball. She contributed graphics and wrote articles for the school's monthly literary magazine and for the school newspaper. Notably, she did the graphic design for the cover of the literary magazine.

Nicole's summer activities included a four-year Engineering Apprentice internship for the Presidential Helicopter Program at Patuxent River Naval Air Station.

Nicole is the daughter of Jim Tomasic, Jr., and Mary Ann Tomasic, and is the granddaughter of Jim and Joan Ruffing of Youngstown, Ohio, and Carol Ann Tomasic of Pittsburgh, Pennsylvania, and James Harcarik Tomasic, LPSCU Branch 52 Secretary.

Nicole, her parents, her brothers Brendon, Ryan, and Connor, and her sister, Megan, reside in Dameron, Maryland.

The LPSCU congratulates Nicole on her graduation from high school and wishes her continued success in her future educational pursuits.



Nicole Tomasic

Rev. Dianiska District to Hold Matching Fund Event

In conjunction with the LPSCU Matching Fund Program, members of the Rev. Dianiska District will hold a Special Gifts Raffle at their Christmas party on December 7, 2014, to benefit Ava Kurilla, age 3, daughter of Mr. and Mrs. Stephen Kurilla, Larksville, Pennsylvania.

Ava was diagnosed with Neuroblastoma in November of 2013. Monies raised will aid Ava's family with continuing medical and travel expenses.

For the matching funds event, District members donate special gifts valued at a minimum of \$10.00. These gifts are raffled off at the District's annual Christmas party, with proceeds going to a special charity. This year's Christmas party will be held at the Best Western Genetti Hotel, Wilkes-Barre, Pennsylvania.

We are asking our District members or any LPSCU member to support this worthwhile project by donating a gift or by attending the Christmas party. For further information, please contact Debbie Adamchak at 570-696-1663 or Jean Kapral at 570-287-1328.

The 20 Payment Life Insurance Plan

The 20 Payment Life Insurance Plan offered by the LPSCU is an economical and beneficial plan for anyone age 0 to 70. Premiums are low and can be paid monthly, quarterly, semi-annually, or annually. The distinctive feature of this plan is that premiums are paid for a period of twenty years and then the certificate is paid in full. Coverage remains in full force and effect for the entire life of the insured without any additional premium payments required. In the event of death prior to twenty years, the face amount of the policy is paid to the insured's named beneficiary(ies), except as provided within the contract regarding Suicide and Contestability.

A member with a 20 Payment Life Insur-

ance Plan is entitled to all fraternal benefits of the LPSCU including educational awards, youth and adult activities, newborn benefits, prescription discount card, official publication, and discount car rental.

To apply for this specific plan, or any other insurance plan offered by the LPSCU, contact your Branch Secretary or the LPSCU Home Office.

Listed below are the Annual and Monthly Premium Schedules for the 20 Payment Life Insurance Plan. The premiums listed are based on \$1,000 of life insurance coverage. Semi-annual and quarterly premium rates are also available by contacting your Branch Secretary or the Home Office.

20 PAYMENT LIFE ANNUAL PREMIUM RATES PER \$1,000

Based on 2001 CSO Male and Female Mortality Tables — Based on Age at Last Birthday

Issue Age	Annual		Monthly	
	Male	Female	Male	Female
0	8.04	7.75	0.72	0.70
1	8.13	7.83	0.73	0.70
2	8.22	7.92	0.74	0.71
3	8.32	8.01	0.75	0.72
4	8.41	8.10	0.76	0.73
5	8.51	8.19	0.77	0.74
6	8.61	8.29	0.77	0.75
7	8.72	8.38	0.78	0.75
8	8.82	8.48	0.79	0.76
9	8.93	8.58	0.80	0.77
10	9.03	8.68	0.81	0.78
11	9.15	8.78	0.82	0.79
12	9.22	8.89	0.83	0.80
13	9.53	8.99	0.86	0.81
14	9.84	9.10	0.89	0.82
15	10.16	9.21	0.91	0.83
16	10.48	9.32	0.94	0.84
17	10.80	9.43	0.97	0.85
18	11.12	9.65	1.00	0.87
19	11.46	9.97	1.03	0.90
20	11.73	10.23	1.06	0.92
21	12.07	10.55	1.09	0.95
22	12.43	10.89	1.12	0.98
23	12.81	11.24	1.15	1.01
24	13.19	11.61	1.19	1.04
25	13.59	11.98	1.22	1.08
26	14.00	12.36	1.26	1.11
28	14.86	13.18	1.34	1.19
29	15.32	13.61	1.38	1.22
30	15.79	14.05	1.42	1.26
31	16.28	14.51	1.47	1.31
32	16.79	14.98	1.51	1.35
33	17.33	15.46	1.56	1.39
34	17.89	15.96	1.61	1.44
35	18.47	16.47	1.66	1.48

Issue Age	Annual		Monthly	
	Male	Female	Male	Female
36	19.08	17.02	1.72	1.53
37	19.71	17.58	1.77	1.58
39	21.04	18.76	1.89	1.69
40	21.75	19.39	1.96	1.75
41	22.47	20.04	2.02	1.80
42	23.23	20.71	2.09	1.86
43	24.02	21.41	2.16	1.93
44	24.83	22.14	2.23	1.99
45	25.67	22.90	2.31	2.06
46	26.54	23.68	2.39	2.13
47	27.45	24.48	2.47	2.20
48	28.39	25.32	2.56	2.28
49	29.38	26.20	2.64	2.36
50	30.43	27.09	2.74	2.44
51	31.53	28.02	2.84	2.52
52	32.68	28.99	2.94	2.61
53	33.90	29.98	3.05	2.70
54	35.17	31.01	3.17	2.79
55	36.50	32.08	3.29	2.89
56	37.89	33.19	3.41	2.99
57	39.35	34.34	3.54	3.09
58	40.90	35.54	3.68	3.20
59	42.55	36.79	3.83	3.31
60	44.31	38.11	3.99	3.43
61	46.16	39.46	4.15	3.55
62	48.11	40.88	4.33	3.68
63	50.18	42.39	4.52	3.82
64	52.39	43.99	4.72	3.96
65	54.76	45.71	4.93	4.11
66	57.29	47.54	5.16	4.28
67	60.04	49.50	5.40	4.46
68	63.06	51.61	5.68	4.64
69	66.35	53.90	5.97	4.85
70	69.97	56.37	6.30	5.07

**Time is Running Out!
Send Us Your Recipe
TODAY!!**

The LPSCU is Planning a Cookbook for our 2016 Convention



Wouldn't you love to share
some of your favorite family recipes
with other members of the LPSCU?

Recipes must be typed on 8½ x 11 paper
and mailed to:

LPSCU Cookbook
Margaret A. Ferri
428 East Frankford Street
Bethlehem, PA 18018-2915
or you can email them to
cookbook2016@outlook.com.

Please include your name, address, and a phone
number (in case we have any questions
about ingredients).

Your name will be published with your recipe.

**Help us make a great cookbook
for the LPSCU!**

IMPORTANT!

We will not accept copyrighted recipes nor recipes
taken from another recipe book.

We need your family-tested recipes in order to
authenticate our own LPSCU recipe book.

**Recipes will be accepted
until December 31, 2014**

LPSCU Represented at NSS Convention

National President Theresa Kluchinski and National Secretary-Treasurer Mary Jo Savidge were invited to attend the 36th Quadrennial Convention of the National Slovak Society, held at the Hershey Lodge and Convention Center, Hershey, Pennsylvania, from Sunday, June 22 through Thursday, June 26, 2014. President Kluchinski and Secretary-Treasurer Savidge attended Tuesday morning's session, relaying greetings and best wishes for a productive meeting on behalf of the LPSCU national officers, Board of Directors, and membership. Later that evening they attended the Convention Banquet, which allowed time for socializing with the other guests and delegates.

The National Slovak Society, today known as NSS Life, is in the 124th year of service to its members.



From left, Joseph J. Annotti, president and CEO, American Fraternal Alliance; Mary Jo Savidge, LPSCU national secretary-treasurer, Theresa Kluchinski, LPSCU national president; Betsy Johnson; and Steven J. Johnson, deputy insurance commissioner, Commonwealth of Pennsylvania.



L-R: LPSCU National President Theresa Kluchinski, NSS Secretary-Treasurer Linda M. Strom, NSS National President David G. Blazek, and LPSCU National Secretary-Treasurer Mary Jo Savidge.

Dear Junior Members,

WHOOOOO is calling? It's Halloween night and you hear the hoot of an owl. It can be a bit scary and may send a shiver up your spine. But owls are neither scary nor dangerous. In fact, they are helpful to farmers because they eat rodents and other pests that do damage to crops. Farmers can lose huge amounts of crops and stored grains to rodents. Lost crops mean lost revenue for the farmer. Owls play an important role in keeping these potential pests under control. And they do it all for free!



Great Horned Owl

There are over 200 different species of owls throughout the world. Nineteen different kinds are found in North America alone. Owls are found in all different habitats and there are different owl species found on all continents except Antarctica.

All owls have upright posture and forward-facing eyes that give them

binocular vision, just like humans. Owls cannot turn their eyes. Instead, they can rotate their heads up to 270 degrees (but not all the way around, as is commonly thought!) Many owl species have asymmetrical ears that are different sizes and different heights on their heads. This gives the birds superior hearing and the ability to pinpoint where prey is located, even if they can't see it.

Owls are raptors, or birds of prey, meaning they survive by eating live animals that they catch in their sharp beaks or talons. Their diet includes insects, spiders, earthworms, reptiles, amphibians, fish, birds, and small mammals. What they eat generally depends on their size and the species of owl. Small Screech Owls, for instance, mostly feed on insects, while larger Barn Owls prefer a diet of mice, voles, and shrews. Very large owls, such as the Great Horned Owl, prefer rabbits and hares, but will also feed on everything from rodents and frogs to squirrels, skunks, small foxes, and even the occasional unlucky house cat. Most owls are opportunistic, meaning they will take whatever prey they can find in their habitat.

Owls are not the most polite eaters, swallowing small animals whole. Any pieces and parts that they cannot digest, such as feathers, fur, teeth, and bones, are spit up in what are called owl "pellets." If you look carefully on the ground beneath an owl's nest or habitual roost, you may find some of these pellets. You can learn a lot about an owl's diet by studying what's inside these pellets. Pellets don't, however, take into account the owl's additional diet of worms, insects, and other totally digestible prey.

Contrary to what you might think, not all owls hoot. They can make a wide range of other sounds, such as screeches, whistles, barks, and hisses. During the nesting season, owl calls can often be heard up to a mile away.

Owls come in all shapes and sizes. Females are usually larger than males. The Northern Saw-whet Owl is one

of the most common owls in forests across northern North America and often winters in the U.S. From 6.7 to 8.7 inches long and weighing just 2 to 5 ounces, this tiny owl has a cat-like face, oversized head, short body and tail, no ear tufts, and bright yellow eyes. On the other hand, the Great Horned Owl can be 17 to 25 inches long with a wing span of 3 to 5 feet and weigh up to 5 pounds. Great Horned Owls are very powerful birds with prominent ear tufts, huge yellow eyes, and a deep hooting voice. They are what we picture when we think of the typical "Halloween owl." They are one of the most common owls in North America and can adapt to habitats as varied as deserts, wetlands, forests, suburban backyards, and even cities.

Some owls, like the Burrowing Owl found in the southwestern U.S. and other open, arid landscapes of North and South America, nest and roost in burrows such as those excavated by prairie dogs. Unlike most owls, Burrowing Owls are often active during the day, although they do most of their hunting from dusk to dawn when they can use their keen night vision and hearing to their advantage. Living in open grasslands as opposed to the forest, the Burrowing Owl has developed longer legs, which enable it to sprint as well as fly when hunting.

Snowy Owls are large owls notable for their striking white plumage and their extreme northerly range which includes tundra habitat throughout Alaska, Canada, and Eurasia. They are 20 to 28 inches long with a 49- to 59-inch wingspan and can weigh from 3.5 to 6.5 pounds. Their thick plumage, heavily feathered taloned feet, and coloration make them well suited for life



Snowy Owl

north of the Arctic Circle. Snowy Owls nest on the ground, building a scrape on top of a mound or boulder. A site with good visibility is chosen, such as the top of a mound with ready access to hunting areas and a lack of snow. During the winter, Snowy Owls often migrate southward, but seldom past the Canada-U.S. border. That's why this past winter was so unusual. A phenomenon called an irruption occurred whereby hundreds of Snowy Owls came much farther south than normal, wintering throughout New England, the Mid-Atlantic, and the upper Midwest. Some were even spotted along the East Coast from Virginia to Florida for the first time in decades. The reasons for the owls' unpredictable invasion from the north are not fully understood, but it was an exciting time for birdwatchers and scientists alike, and the likes of which aren't expected to reoccur for another 50 years. If you were lucky enough to see one where you live, you were lucky indeed!

Cecilia B. Gaughan, Fraternal Activities Director

Animal Fruits & Veggies



Humans are not the only creatures who need fruits and vegetables for a healthy diet. Animals need them also. Many animals eat a variety of fruits and vegetables, including the peel, rind, and skin, which often contain the most vitamins.

The bear gets his vitamin C from blueberries and raspberries. These fruits

help his body absorb calcium, which gives the bear strong bones also.

The deer likes green, leafy vegetables in his diet. I'm sure anyone who's had their vegetable garden raided by hungry deer knows this all too well! This diet is rich in iron which provides oxygen to organ systems.

Fruit bats typically eat a wide variety of fruits ranging from mangoes to avocados. All are an excellent source of energy.

Elephants love fruit and will eat pineapples, bananas, and watermelon.

The porcupine gets some of his energy from potatoes he digs up in the ground.

Toucans get their vitamin C from papaya and banana passion fruit. Their bills are specially adapted for cracking open the hard shells of some tropical fruits.

And, of course, everyone knows how much rabbits like carrots and all types of lettuce!

Matching Clues

Read each clue in the left column, then add an "s" to the words in the right column and match the word you've created to the correct clue.

- | | |
|---------------------------------------|--------|
| 1. "X" marks the... | a. pat |
| 2. Go down to the bottom of the water | b. hut |
| 3. Word that means "halt" | c. lap |
| 4. To close | d. pot |
| 5. Mark left from an injury | e. lam |
| 6. Shut a door forcefully | f. ink |
| 7. Small argument | g. car |
| 8. Hit with an open hand | h. top |

Who Is He?

Born in Detroit on February 4, 1902.
 Grew up in Little Falls, Minnesota.
 Showed great mechanical ability as a child.
 Started college when he was 18.
 Left college to become a daredevil stunt pilot.
 Worked as a U.S Air Mail pilot at age 25.
 Was the first person in history to be in New York one day and Paris the next.
 First to fly non-stop alone across the Atlantic Ocean.

Who Is He? Answer – Charles Lindbergh

Arts and Crafts

What do you always take with you but leave behind? Your fingerprints! Everyone's fingerprints are different and unique to them. That's why law enforcement and forensic investigators use fingerprints to identify people.

There are records of fingerprints being taken many centuries ago, although they weren't nearly as sophisticated as they are today. The ancient Babylonians pressed the tips of their fingertips into clay to record business transactions. The Chinese used ink-on-paper finger impressions for business and to help identify their children.

Two of the early pioneers in the science of fingerprint identification were Scottish doctor Henry Faulds and eugenicist Sir Francis Galton, cousin of Charles Darwin.

By 1901, Scotland Yard had established its first Fingerprint Bureau. The following year, fingerprints were presented as evidence for the first time in English courts.



Want to take your own fingerprints? You'll need a pencil, paper, and some clear tape. Here's how you do it:

1. Rub a pencil on a piece of paper, covering an area about $\frac{3}{4}$ " around.
2. Rub your finger on that pencil mark until your fingertip is blackened.
3. Press the sticky side of a piece of tape to your fingertip, then pull it off slowly.
4. Stick the tape to a clean piece of white paper to reveal your fingerprint.
5. Follow the same procedure for your other nine fingers.

Most people's fingerprints fall into one of three patterns: an arch, a loop, or a whorl. What do yours look like?

Kids in the Kitchen

TURKEY SLIDERS

- | | |
|--------------------------------|---------------------------|
| 2 lbs. ground turkey | 1 egg |
| $\frac{1}{8}$ cup soy sauce | $\frac{1}{4}$ tsp. pepper |
| 3 garlic cloves | Salt (to taste) |
| 1 cup finely chopped onion | Cheese slices (optional) |
| $\frac{1}{2}$ cup bread crumbs | 8 mini buns |

To make the turkey burger patties, gently mix the ground turkey with soy sauce, cloves, onion, bread crumbs, egg, salt and pepper together in a bowl. Make the burgers about $\frac{3}{4}$ " thick and the same size around as the buns you are using. Grill for about 5 minutes on one side then flip over and grill for 3 to 5 minutes until the patties are done. You can melt some cheese slices on top just before removing from the grill. Top with sliced tomatoes and your favorite condiments.



Matching Clues Answers – 1/d Spot, 2/f Sink, 3/h Stop, 4/b Shut, 5/g Scar, 6/e Slam, 7/a Spat, 8/c Slap

Saints and Seasons in the Liturgical Year

continued from page 3

Who are some of your favorite saints? Your patron saint, Baptismal saint name, Confirmation saint name, or some other saint you love and respect might not be listed on the calendar, but you can still celebrate them privately. You can find the days of celebration for these saints in sources such as *Butler's Lives of the Saints*. Some saints not listed on the universal calendar can be celebrated in special locations. For example, the feast of St. Columba, June 9, is not on the universal calendar, but it is listed on the calendar for the Diocese of Youngstown. St. Columba is the patron of the cathedral and is celebrated as a solemnity in the whole diocese (except when it falls on a Sunday). Another example is the feast of St. Edward, the patron of my parish, that falls on October 13.

This year there have been and will be some exceptions where a feast or a saint is celebrated on Sunday. They are: Epiphany, January 5; The Presentation of the Lord, February 2; Saints Peter and Paul, June 29; The Exaltation of the Holy Cross, September 14; All Souls' Day, November 2; and The Holy Family, December 28.

Some of the other feasts or saints that are celebrated when they fall on Sunday include: The Solemnity of Mary, Mother of God, January 1; The Birth of John the Baptist, June 24; The Assumption of Mary into Heaven, August 15; All Saints, November 1; Christmas, December 25.

The reason why the above listed feasts or saints are celebrated when they fall on Sunday is that each one is intimately associated with Jesus and his saving work. One of the benefits most priests can take advantage of when these feasts and saints occur on Sunday is that we can explain an aspect of our faith that is often seen and heard by those people who attend daily Mass or who pray the Liturgy of the Hours.

One feast day celebrated every year is the Annunciation and it has some special rules. Given the nature of the feast, the Annunciation by the Archangel Gabriel that Mary would be the Mother of God, is never omitted. While the normal day for the solemnity is March 25, it would be celebrated on the 26th when the 25th falls on a Sunday. The exception would be when the 25th of March falls on Palm Sunday, Holy Week, or Easter Week. If so, the feast is celebrated on the Monday of the Second Week of Easter. It might sound a bit complicated, but the Liturgical Laws regulating the calendar are very logical.

If you have a longer experience of being a Catholic, you may have noticed over time that some saints used to be celebrated on the calendar, but not now, while some have only

recently been added to the calendar. In the 1963 Roman Missal, some of the saints that were on the universal calendar included: St. Gaspar (January 3), St. Joan of Arc (May 30), St. Edward (October 13), St. Barbara (December 4), and many others. Over the centuries, there have been several liturgical renewals that resulted in a revised calendar. The number of saints celebrated on the universal calendar was reduced several times because of a concern that the focus on the seasons of the Liturgical Year could be obscured and overlooked.

The Liturgical Calendar has been revised with each edition of the current Missal. The third edition, promulgated in 2003 and published in English and initiated in December 2012, has listed some of the new saints canonized by St. John Paul II and some saints from different time periods and different parts of the world. The calendar in use up to the 1963 Missal tended to be dominated by saints from Europe. The current calendar has included saints of the Church from around the world. Saints from Africa, China, Japan, Korea, and Vietnam are on the universal calendar. Another example is St. Damien de Veuster (of Molokai), now on the calendar for May 10.

Take some time to learn about the saints. You will be happy that you did. Little by little each year, you will be surprised how quickly your faith life and prayer will be enriched by our brothers and sisters in heaven.

In Part 2, we will reflect on another part of the Liturgical Calendar of the Church – the Seasons of the Church Year.

Msgr. Robert J. Siffrin

WPSCA to Host Beer Tasting

Plan to join the Western Pennsylvania Slovak Cultural Association for its fourth annual European beer tasting event on Saturday, October 11, 2014, from 1:00 to 4:00 p.m. at the Sonoma Grill, 947 Penn Avenue, in the cultural district of downtown Pittsburgh, Pennsylvania. This has become one of WPSCA's most popular events and this year promises to be no different. The program will once again feature samples of some of Europe's greatest beers, including beer from Slovakia, as well as good food and good friends.

The price of this event is \$25 per member (\$30 for non-members), payable in advance. Attendance is limited to 50 members and guests on a first come, first served basis. For reservations, call Joe Senko at 412-531-2990 or Albina Senko at 412-343-5031.