



**LPSCU Life**

Security, Peace of Mind

# Morning Star

ZORNIČKA

Vol. 81, No. 883  
March-April 2022

## Chairperson of Trustees Mary Ann Ewasko Retires

*"I may be retiring as Chairperson of Trustees of the LPSCU, but I'm not going anywhere anytime soon!"*

Those are the words of Mary Ann Ewasko, who recently tendered her resignation as National Chairperson of Trustees, effective February 1, 2022. It doesn't take long in conversation to learn that Mary Ann shares a deep, rich history with the Ladies Pennsylvania Slovak Catholic Union. Her grandfather, Adam Shinal, started Branch 6 shortly after the LPSCU was formed. Her family has been "caretakers" of that Branch for decades. Additionally, Mary Ann is currently President of the Reverend Dianiska District, a position her fellow District members say she has to continue to hold.

Mary Ann has held many positions within the organization over the years. She has been a member of the National Board of Directors for thirty years in various capacities and has served as Chairperson of the Trustees for the past 21 years. Prior to being elected Chairperson, she was a National Trustee for 8 years, filled in as temporary National Secretary-Treasurer as needed on two occasions, worked in the Home Office as a Senior Bookkeeper in the early 1960s, is Secretary of Branch 6 (and has been since 1981), and has served as President of the Reverend Dianiska District for 24 years and counting. And these are just some of the positions she has held!

Mary Ann is also active in other Slovak organizations. She is a member of Slovak Catholic Federation



and Slovak Heritage Society of Northeastern Pennsylvania. She willingly volunteers to chair various events such as Join Hands Day, Make a Difference Day, and clothing drives.

When asked what she considers her biggest honor, without hesitation Mary Ann says being co-chair of the LPSCU's 100th Anniversary Celebration and chairperson of the LPSCU 100th Anniversary Hospitality Night. In talking with Mary Ann, you can immediately feel her deep sense of pride that she was an integral part of these celebrations.

Her extended family is actively involved with the LPSCU as well. Her daughter and son-in-law, Diane and Paul J. Jason, are longtime LPSCU members, as are their children. Her two grandchildren, Paul G. Jason and Marissa Jason, have each been selected as Youth Achievement Award recipients. Both have also received numerous LPSCU scholarships. Additionally, Mary Ann's sister, Eleanor Kluchinski, is President of Branch 6.

When asked whether she planned to do any traveling in her retirement, Mary Ann responded with a quick "no," but not due to COVID. Rather, she readily admits that she likes to stay close to home. Her grandchildren enjoy going to Mary Ann's house and cooking and baking up a storm. (It is a known fact that any food made at a grandparent's house tastes 100% better!)

*The LPSCU thanks Mary Ann for her many, many years of service and dedication to our organization. We also congratulate her on her retirement and wish her continued enjoyment in her future endeavors.*



# In This Issue

Spiritual Advisor's Message .....	3	Member Attains Eagle Scout Rank.....	13
Board of Directors Annual Meeting Notice.....	3	New Insurance Issued .....	13
Cooking Corner .....	3	LPSCU 3 Payment Life Plan .....	14
Spiritual Protector's Easter Prayer .....	4	Branch 39 Spreads Christmas Cheer.....	15
Letters.....	4	In Memoriam.....	15
National Officers' Easter Greeting .....	4	2022 LPSCU College Award Notice .....	15
Notice of Vacancy: Chairperson of Trustees .....	5	SS.C.M. Appeal Update.....	16
Pittsburgh District Holds Matching Fund Event .....	5	2022 Fraternalist of the Year Notice .....	16
Need a Unique Gift? .....	5	Make Your Child's Vaccine Shot Less Stressful .....	17
Can You Help Us Locate These Members? .....	6	LPSCU Flexible Annuity .....	18
Branch 39 Holds Holiday Virtual Food Drive .....	7	Msgr. Beeda District Schedules Meeting.....	19
Part Time Position Available at Home Office .....	7	2022 Home Office Closing Dates .....	19
Youth Achievement Award Notice .....	7	Do You Know a "Family of the LPSCU"? .....	19
LPSCU 2022 Activity Campaign.....	8	Tree of Life Reservation Form.....	19
2022 Catholic Grade School Award Notice .....	9	Liberty Mutual Benefits for LPSCU Members.....	20
Donate to the LPSCU Scholarship Program .....	9	Discount on Car Rentals.....	21
Financial Check-Up .....	10	Have Any News? .....	21
Branch 213 to Host Flag Day at the Ballpark .....	10	LPSCU Matching Fund Program .....	21
Anne (Shinal) Cichy Memorial Award Notice .....	10	Information About LPSCU Districts.....	21
Pittsburgh District Holds Christmas Party.....	11	Junior Branch Journal.....	22-23
Information Request Form.....	12	Join Us for a Bingo Night.....	24
Rev. Dianiska District to Hold Spring Meeting .....	12	Calling All LPSCU Bowlers .....	24
2022 Catholic High School Award Notice .....	12	2022 Make a Difference Day Reminder .....	24
Bishop Grutka Memorial Scholarship Notice .....	13		

## Calendar of Events

Because of the ongoing coronavirus pandemic, many events have been postponed, cancelled, or rescheduled. At the time Morning Star went to press, the events listed on this calendar and in this issue were correct to the best of our knowledge. We recommend that members check the LPSCU's website ([www.LPSCU.org](http://www.LPSCU.org)) or Facebook page (LPSCU Life) or contact their Branch representative closer to each event in case any changes or cancellations had to be made.

### MARCH

- 9** – Msgr. Beeda District meeting at 6:00 p.m. at Tom's Restaurant, Route 93, Conyngham, Pennsylvania. Make a reservation with Anita Gregory (570-788-3263) by March 2.
- 15** – Deadline to submit matters for consideration by the Board of Directors at its Annual Meeting on March 25 in Wilkes-Barre, Pennsylvania.
- 20** – **Deadline to submit articles for May/June Morning Star.**
- 20** – Rev. Dianiska District Spring Meeting at 1:00 p.m. at the North End Slovak Citizens Club, 635 N. Main Street, Wilkes-Barre, Pennsylvania. Branch 7 will host.
- 20** – Deadline for members to contact Theresa Kluchinski if they're interested in participating in the 2022 National Slovak Bowling Tournament in Cleveland, Ohio, on May-13-14, 2022. *See page 24 for more details.*
- 23-24** – LPSCU Internal Audit
- 25** – LPSCU Annual Meeting at the Holiday Inn East Mountain, 300 Wildflower Drive, Wilkes-Barre, Pennsylvania. First session will begin at 8:30 a.m. *See page 3 for more information.*

### APRIL

- 1** – Deadline to nominate a member as our 2022 LPSCU Fraternalist of the Year. *See nomination guidelines on page 16.*
- 4** – Slovak Catholic Federation Spring Meeting, Danville, Pennsylvania
- 25-27** – American Fraternal Alliance Spring Symposium, Indianapolis, Indiana
- 30** – Deadline to apply for a 2022 LPSCU College Award. *See notice on page 15 for details.*

### MAY

- 1** – Deadline to make a reservation to celebrate Flag Day at the Ballpark with members of LPSCU Branch 213.
- 13-14** – National Slovak Bowling Tournament in Cleveland, Ohio. *See page 24 for details.*
- 20** – **Deadline to submit articles for July/August Morning Star.**

*continued on page 9*

LADIES PENNSYLVANIA  
SLOVAK CATHOLIC UNION

Morning Star ZORNICKA



(USPS 699-520)

ZORNICKA (Morning Star), a bi-monthly magazine, is the official publication of the Ladies Pennsylvania Slovak Catholic Union, National Headquarters, 71 South Washington Street, Wilkes-Barre, PA 18701. Send articles for publication to Deborah McKinley, Public Relations Director, 34 Oxford Street, Tamaqua, PA 18252; 610/704-7288; [zornicka@lpescu.org](mailto:zornicka@lpescu.org)

Articles must be received by the 20th of the month, 5½ weeks prior to the issue date.

Printed by Triangle Press, 6720 Allentown Blvd., Harrisburg, PA 17112.

Periodical Postage paid at Wilkes-Barre, PA 18701 and additional entries.

Subscription Rate: Members — free; Non-members — \$25.00 per year.

Postmaster: Send address changes only to: Zornicka (Morning Star), Ladies Pennsylvania Slovak Catholic Union, 71 South Washington Street, Wilkes-Barre, PA 18701.

### OFFICE HOURS AT NATIONAL HEADQUARTERS

**Monday through Friday:**  
**November 1 — April 30**  
**7:00 a.m. to 4:30 p.m.**  
**May 1 — October 31**  
**7:00 a.m. to 3:30 p.m.**  
**Phone: 570/823-3513**  
**Toll Free 888/834-6614**  
**Fax: 570/823-4464**  
**E-mail: [lpescu@lpescu.org](mailto:lpescu@lpescu.org)**  
**Website: [www.lpescu.org](http://www.lpescu.org)**

### BOARD OF DIRECTORS

**SPIRITUAL ADVISOR**  
Reverend Robert Seeman, St. Catherine of Siena, 199 McGovern Boulevard, Crescent, PA 15046-7026; 412/225-3585; [rseeman801@gmail.com](mailto:rseeman801@gmail.com)

**PRESIDENT**  
Theresa A. Kluchinski, 446 Mountain Oaks Drive, Laurel Run, PA 18706; 570/823-3513, toll free 888/834-6614; [theresa@lpescu.org](mailto:theresa@lpescu.org)

**VICE PRESIDENT**  
Anita Gregory, 304 Turkey Path Road, Sugarloaf, PA 18249; 570/788-3263; [anitag13@hotmail.com](mailto:anitag13@hotmail.com)

**SECRETARY/TREASURER**  
Mary Jo Savidge, 71 South Washington Street, Wilkes-Barre, PA 18701; 570/823-3513, Fax 570/823-4464; [maryjo@lpescu.org](mailto:maryjo@lpescu.org)

**CHAIRPERSON OF TRUSTEES**  
Position currently vacant

**TRUSTEES**  
Dolores M. Evanko, 173 Berner Avenue, Hazleton, PA 18201; 570/454-5547; [devanko112@gmail.com](mailto:devanko112@gmail.com)

James Yocum, 1738 Evergreen Drive, Hazle Township, PA 18202; 570/436-6792; [jpocum@ptd.net](mailto:jpocum@ptd.net)

Margaret Jollimore, 1001 SR 292E, Harveys Lake, PA 18618-7829; 570/760-9790; [jollimore.lpescu@ymail.com](mailto:jollimore.lpescu@ymail.com)

Joan T. Hladek, 2138 Waterbury Lane E., Sycamore, IL 60178; 815/895-0431; [jthladek@gmail.com](mailto:jthladek@gmail.com)

# A Lenten Message from Our National Spiritual Advisor

Rev. Robert Seeman

## THE PASCHAL MYSTERY OF JESUS CHRIST

As we approach Ash Wednesday and the beginning of the Lenten season, we turn our focus to the age-old Lenten practices of fasting, prayer, and almsgiving. By doing so, we are encouraged to deepen our relationship with God. This 40-day journey is a time for the faithful to truly live Lent in a meaningful way devoted to prayer and reflection on the Passion, Death, and Resurrection of the Lord.

The scriptures of the Lenten season show us that through His suffering comes the great victory and glory of Easter. Pope Francis said the Paschal Triduum is the center “of our faith and vocation in the world.” Pope Francis went on to say, “We are called to live the mystery of the death and resurrection of the Lord.” We live this mystery every time we celebrate the Mass. May the love, the forgiveness, and the mercy shown to us by Jesus inspire us to be more like him. May the Virgin Mary, said Pope Francis, “accompany us on this spiritual journey, she who followed Jesus in his passion, was present with Him under the Cross, and received in her mother’s heart the joy of the resurrection.”

I wish all a grace-filled Lent, Holy Week, and a Blessed Easter.

Blessings,  
*Father Bob*



*Save us, Savior of the world  
for by your Cross and Resurrection  
you have set us free*

### The Fast Life

*Fast from judging others;  
Feast on Christ dwelling in them.  
Fast from fear of illness;  
Feast on the healing power of God.  
Fast from words that pollute;  
Feast on speech that purifies.  
Fast from discontent;  
Feast on gratitude.  
Fast from anger;  
Feast on patience.  
Fast from pessimism;  
Feast on hope.  
Fast from negatives;  
Feast on encouragement.  
Fast from bitterness;  
Feast on forgiveness.  
Fast from self-concern;  
Feast on compassion.  
Fast from suspicion;  
Feast on truth.  
Fast from gossip;  
Feast on purposeful silence.  
Fast from problems that overwhelm;  
Feast on prayer that sustains.  
Fast from anxiety;  
Feast on faith.  
~ Author unknown*

## LPSCU Board of Directors Annual Meeting

This announcement is made to all members of the LPSCU that the Annual Meeting of the Board of Directors will convene on Friday, March 25, 2022, at 8:30 a.m. at the Holiday Inn East Mountain, 300 Wildflower Drive, Wilkes-Barre, Pennsylvania.

Members wishing to submit matters for the Board of Directors to consider at this meeting are directed to send them to the attention of Theresa Kluchinski at the LPSCU National Headquarters, 71 South Washington Street, Wilkes-Barre, PA 18701 or to PO Box 32, Wilkes-Barre, PA 18703. All correspondence relative to this Annual Meeting should be received **no later than March 15, 2022.**



“Like” Us  
on Facebook  
at LPSCU Life

## Cooking Corner

### APPLESAUCE AND RAISIN SQUARES

2½ cups flour	1 cup raisins
1¼ cups sugar	1 cup Crisco shortening
1 tsp. baking powder	1 egg
Pinch of salt	Cinnamon
1 jar applesauce	

Sift dry ingredients together. Add shortening and work with hands until crumbly. Drop in egg and work from bottom of the bowl until well mixed. Put 2/3 of the mixture on a 10x15-inch cookie sheet and press down with hands. Spread the applesauce over the mixture and sprinkle the raisins on top. Crumble the remaining third of the dry ingredients over all. Dot with butter and sprinkle with cinnamon. Bake 30 minutes at 350 degrees. When cool, cut into squares.



## An Easter Prayer from Our Spiritual Protector

Abbot Gary Hoover, OSB



It is only right, with all the powers of our heart and mind, to praise You Father and Your Only-Begotten Son, Our Lord Jesus Christ. Dear Father, by Your wondrous condescension of loving-kindness toward us, Your servants, You gave up Your Son. Dear Jesus, You paid the debt of Adam for us to the Eternal Father by Your Blood poured forth in loving kindness. You cleared away the darkness of sin by Your magnificent and radiant Resurrection. You broke the bonds of death and rose from the grave as a Conqueror. You reconciled heaven and earth. Our life had no hope of eternal happiness before You redeemed us. Your Resurrection has washed away our sins, restored our innocence, and brought us joy. How inestimable is the tenderness of Your Love!

~ St. Gregory the Great's Easter Prayer

PEACE AND A BLESSED EASTER

Abbot Gary, OSB

## Letters

Thank you for the gift cards!\* We're going to buy something nice.

**Juliet and Lucy Jedlovec**  
Branch 60  
West Hazleton, Pennsylvania

\*Juliet and Lucy were Honorable Mention winners in the LPSCU's 2021 Coloring Contest.



The National Officers  
of the  
Ladies Pennsylvania  
Slovak Catholic Union  
extend a most  
Blessed and  
Happy Easter to all!

Veselú Vel'kú noc  
Radostne Aleluja  
Soentu Velyku  
Linkejimai



# NOTICE OF VACANCY

## National Chair of Trustees

After 29 years of service Mary Ann Ewasko has decided to retire, effective February 1, 2022. We thank her for her dedicated service and wish her the best in her retirement.

Because of her departure, we are seeking applicants for the position of Chair of Trustees. The Chair of Trustees is an officer elected by the delegates at the LPSCU National Convention held every four years. As a result, therefore, the Chair is a member of the National Board of Directors and the Executive Finance Committee.

Pursuant to Article III Section 6 of the LPSCU By-Laws: "In the event of a vacancy in any other office, such vacancy will be filled temporarily by the Executive Finance Committee, and the temporary appointee will act until the National Board of Directors makes a permanent appointment to fill the vacancy for the balance of the term. Notice of the vacancy will be published in the official publication. Any member qualified for the office may submit a written application to the National Board of Directors. All applications must be submitted within 90 days of the date of publication of the notice of vacancy."

The following additional restrictions are pursuant to Article III Sections 2, 3, and 4 of the By-Laws:

- A candidate for office must be at least 21 years of age and an active member.
- No two immediate family members can serve as an Officer of the LPSCU during the same term of office. Immediate family is defined as: grandparent, parent, spouse, or sibling.
- A member who is a National Officer/Director/Board Member of another fraternal benefit society may not hold office with the LPSCU.

Following are the responsibilities and requirements for the position of Chair of Trustees:

- Member of the Board of Directors, meeting at least four (4) times a year. Attendance is required.
- Member of the Executive Finance Committee, meeting at least four (4) times a year. Attendance is required.
- Coordinate the annual internal audit, providing a written report to the Board of Directors as to the findings of the annual internal audit.
- Represent the LPSCU at functions as requested (e.g., seminars, fraternal functions, meetings, etc.)
- Provide training for newly elected Trustees.
- Submit a written report of actions to the Board of Directors.
- Be familiar with and able to use Microsoft Windows (Word, Excel, Power Point) and be generally computer literate.
- Knowledge of the fraternal system, history, and traditions of the LPSCU is helpful, but not necessary.
- College degree in accounting, finance, or business is preferred, with proven business or work experience.

Salary to be determined based on experience.

Resume must be postmarked by June 1, 2022 and sent to:

National Board of Directors  
c/o Theresa Kluchinski, President  
PO Box 32, Wilkes-Barre, PA 18703-0032

## Pittsburgh District Holds Matching Fund Event

The Pittsburgh District held a Matching Fund event in conjunction with its annual Christmas party which took place on November 28, 2021. Approximately thirty members attended the festive event. Members were asked to donate to benefit the Matthew Mursch, Jr. Foundation to assist with his ongoing care and the members were very generous with their donations. The Pittsburgh District then matched the donations made by members. A total of \$500 was collected and sent to the Home Office to be matched through the LPSCU's Matching Fund Program.



## Need a Unique Gift for a Special Occasion?

Whether it be for an anniversary, baptism, birthday, first Holy Communion, confirmation, graduation, or wedding, the Ladies Pennsylvania Slovak Catholic Union has the perfect gift – a life insurance certificate. The LPSCU offers Single Premium, Three Payment Life, Five Payment Life, Ten Payment Life, Fifteen Payment Life, Twenty Payment Life, Twenty Year Endowment, and Whole Life insurance plans. All are excellent choices, suited to your individual needs.

Contact your Branch Secretary or the Home Office for current premium rates. Premiums are based on the present age of the intended insured.

Insurance coverage with the LPSCU also provides quality service and excellent benefits.

### MEMBER BENEFITS

Educational Benefits	Newborn Benefit
Youth/Adult Activities	Official Publication
Discount Car Rental	Prescription Discount Card

### **Don't delay! Call today!**

*Apply for that special someone to become a member of our fraternal family!*

**LPSCU Life**

Security, Peace of Mind

# CAN YOU HELP US LOCATE THESE MEMBERS?

We are looking for the following members. Their last known place of residence is listed below.

Amreihn, Kenneth – Essexville, MI	Maloof, Nicholas J. – Hoover, AL	Shook, Alexandra – Hoboken, NJ
Beeda, Michaela – Port Lucie, FL	Maxwell, Brenda – Evans City, PA	Silay, Amanda – Avalon, PA or Glenshaw, PA
Bridzius, Andrius R. – El Paso, TX or San Antonio, TX	McBeth, Ryan – Hellertown, PA	Skopelja, Cynthia – Unionville, IN or Valparaiso, IN
Brinker, Regina – Livermore, CA	McKenzie, Gary – Hazleton, PA	Smith, Meredith – Owego, NY
Burrier, Ryan – Scranton, PA	McMahon, Arianna – Duryea, PA or Avoca, PA	Smith, GeriLynn – Chaumont, NY
Cavenas, Keri L. – Mahanoy City, PA	McTague, Robert – Scranton, PA	Stinavage, Judy – Binghamton, NY
Chvostal, Paul – Cypress, CA	Mathna, Zachary – Fayetteville, NC	Stumpf, Kelly – Blandon, PA
Davies, Bernadette – South Abington Twp., PA or Chaumont, NY	Matuza, William R. – Hazlet Twp., NJ or West Keansburg, NJ	Suchy, Mary – Chicago, IL
DeLorenzo, Joseph – Pennington, NJ or Hillsborough, NJ	Mikulaj, Angela – Lake Station, IN	Susoreny, James – Richardson, TX
Domanic, Robert J. – Joliet, IL	Mikulaj, Brian M. – Lafayette, IN	Talianek, Cathy – Allentown, PA
Fink, Carly – Reading, PA	Miller, Richard – Luta, FL	Tomanio, Terri – Port Charlotte, FL
Fink, Thomas – Coopersburg, PA	Mitrakos, Deborah – Naperville, IL or Aurora, IL	Totin, Anastasia – San Leandro, CA
Giacobbe, Mark – Coplay, PA	Morrison, Irena – Greensboro, NC	Vakerak, Sarah – Munhall, PA
Gillis, Jessica – Somerset, NJ	Moskal, Justin – St. Charles, IL	Vizza, Daniel – Chicago, IL
Golby, Raeleen – Johnstown, PA	Murzyn, Stanley – Flint Hill or Front Royal, VA	Votral, Gregory – Springfield, MA
Gorman, Meghan – Green Lane, PA	Nadzam, Derell – Sarver, PA	Vrabel, Susan – Orlando, FL
Gunther, Amanda – Chicago, IL	Parisi, Allison – Seminole, FL	Wasko, Matthew – Binghamton, NY
Hatalski, Richard – Glen Lyon, PA or Wapwallopen, PA	Philippou, Zoe – Honolulu, HI	Wateski, Jessica – Exeter, PA
Heatherington, Dane – Seminole, FL	Popovich, Janet – Donora, PA or Monessen, PA	Watson, Michael – Hubbard, OH
Hodge, Michael – N. Catasauqua, PA	Rebarchak, John M. – Exton, PA	Weinreich, Sarah – Shenandoah, PA
Hoobler, Mary – Sewickley, PA	Roche, Collin – Doylestown, PA	Weldner, Robert – Orefield, PA
Jones, Jeffrey – Youngstown, OH or Struthers, OH	Rodick, Amanda – Mahanoy City, PA	Wenta, Silvia – Mountain Home, AR or Western Spring, IL
Kinsey, Ann Marie – Taylor, PA	Root, Aaron – Scranton, PA or Clarks Summit, PA	Whitaker, Kimberly – Emmaus, PA
Kniess, Denise M. – Butler, PA	Ruthrauff, Daniel – Bethlehem, PA	Wisniewski, Edward – Waymart, PA or Rockaway, NJ
Lichkus, Jonathan – Somerville, MA	Sell, Kathryn – Valencia, PA	Wooditch, Christopher – Dallas, PA or Hanover Twp., PA
Lowery, Sarah – Rocky River, OH	Sharrow, Roxanne – Youngstown, OH	

If you have any information regarding any of these members or their relatives, please contact Secretary-Treasurer Mary Jo Savidge as soon as possible at 570-823-3513, toll free at 888-834-6614, or via email at [lpescu@lpescu.org](mailto:lpescu@lpescu.org). Your assistance is greatly appreciated.

## Branch 39 Holds Holiday Virtual Food Drive

LPSCU Branch 39 successfully completed its Holiday Food Drive. The drive was conducted virtually by asking Branch members and friends to make monetary donations by mail. Branch 39 members donated \$100 and a like amount was contributed by the Branch. Since this was a Matching Fund project, an additional \$100 will be contributed by the LPSCU Home Office. The proceeds were given to the Catholic Social Services of the Diocese of Scranton – Hazleton CSS Family Center to purchase food items for the Thanksgiving and Christmas holidays for the St. Joseph Food Pantry. Catholic Social Services food pantries are a safety net for families with limited resources who search for the everyday means of sustenance. Through their food pantries, CSS attempts to provide a balanced selection of nutritious food options for those in need. Thank you to all the Branch 39 members who contributed to this worthy cause.



Accepting the donation from LPSCU Branch 39 to the St. Joseph Food Pantry are LeAnn Lywiski (left) and Stephanie Cuadros from Catholic Social Services Hazleton.

## Part Time Position Available at LPSCU Home Office

The LPSCU is looking for a motivated individual to fill a part time position in our Home Office, located at 71 S. Washington Street, Wilkes-Barre, Pennsylvania. Applicants should have good communication and computer skills as well as be proficient in Word, Excel, Power Point, and QuickBooks. Duties will include, but are not limited to, preparing and typing routine correspondence and form letters, verifying information, making copies, answering telephone calls, and other miscellaneous duties as assigned. Applicants should be highly organized and customer service minded as they will work internally with management and other office staff on a daily basis. Hours are Monday through Friday, 12:30 p.m. to 4:30 p.m. Those interested in the position should contact National Secretary-Treasurer Mary Jo Savidge at 570-823-3513 or email [maryjo@lpscu.org](mailto:maryjo@lpscu.org).



# 2022 YOUTH ACHIEVEMENT AWARD

**LET AN OUTSTANDING  
YOUNG PERSON KNOW  
YOU ARE  
APPRECIATED!**

**We all know someone between the ages of 13 and 18 who deserves recognition for his or her scholastic, athletic, fraternal, volunteer, and/or other achievements.**

**Help the LPSCU show an outstanding young member that they are appreciated by nominating him or her for the 2022 Youth Achievement Award.**

**To receive a Nomination Form, contact the Home Office at 570-823-3513 or toll free at 888-834-6614; E-mail: [lpscu@lpscu.org](mailto:lpscu@lpscu.org) or visit our website: [www.lpscu.org](http://www.lpscu.org)**

**THE POSTMARK DEADLINE  
FOR NOMINATIONS IS JUNE 1, 2022.**



LPSCU PRESENTS

# 2022 ACTIVITY CAMPAIGN



HOST AN ACTIVITY\* WHERE YOU SUPPORT GOD'S CHILDREN  
(young or old, two-legged or four-legged)

JANUARY 1 - DECEMBER 31, 2022

Take a picture with the official LPSCU "All God's Children" sign, fill out and submit an LPSCU Activity Form

All qualifying activities receive a Bonus of 300 Branch Points or \$100 District Stipend

\*Simple Monetary participation does not qualify



## JUNE

- 1 – Deadline to apply for the vacant position of LPSCU Chairperson of Auditors. *See page 5 for details.*
- 1 – Deadline to nominate a young member for the 2022 Youth Achievement Award. *Details on page 7.*
- 17 – LPSCU Branch 213 hosts Flag Day at the Ballpark with the Scranton/Wilkes-Barre Railriders. *See page 10 for details.*
- 25 – LPSCU Mid-Year Meeting (via Zoom)
- 30 – Deadline to apply for the 2022 Catholic Grade School Award. *See notice below.*



## 2022 LPSCU CATHOLIC GRADE SCHOOL AWARD \$150 One-Time Award

The LPSCU is proud to announce that it is offering a Catholic Grade School Award Benefit, which is a \$150 one-time award to our members who are attending a Catholic grade school during the 2022-2023 academic year. Members may only receive this award one time.

The following are the Guidelines for applying for the Catholic Grade School Award:

- Must be a member of the LPSCU for two (2) years with \$2,000 permanent reserve life insurance certificate (excludes term insurance).
- Must be enrolled in a Catholic grade school in kindergarten, or in Grades 1 through 8 in the fall of 2022.
- Must provide a wallet-size color photo.

Applicants must meet all criteria and provide data indicated above to be eligible. Incomplete applications or those missing data requirements will not be considered. All materials become the property of the LPSCU and will not be returned. **Applications must be postmarked by June 30, 2022.**

Applications are available from the LPSCU Home Office or its website. Return completed application and supporting materials to:

### Ladies Pennsylvania Slovak Catholic Union

ATTN: Catholic Grade School Award  
P.O. Box 32

Wilkes-Barre, PA 18703

Phone: 570-823-3513 ♦ TF: 888-834-6614

Fax: 570-823-4464

E-mail: [lpscu@lpscu.org](mailto:lpscu@lpscu.org) ♦ Website: [www.lpscu.org](http://www.lpscu.org)

- 30 – Deadline to apply for the 2022 Catholic High School Award. *Details on page 12.*
- 30 – Deadline to apply for the 2022 Bishop Andrew G. Grutka Memorial Scholarship Award. *Details on page 13.*

## JULY

- 1 – Deadline to apply for the Anne (Shinal) Cichy Memorial Award. *Details on page 10.*
- 20 – **Deadline to submit articles for September/October Morning Star.**

## SEPTEMBER

- 16-17 – LPSCU Semi-Annual Meeting, Pittsburgh or Cleveland
- 18 – 100th Anniversary Celebration of the Benedictine Order of Cleveland, Ohio
- 19 – Slovak Catholic Federation Fall Meeting, Cleveland, Ohio
- 20 – **Deadline to submit articles for November/December Morning Star.**
- 26-27 – American Fraternal Alliance Executive Summit, Washington, D.C.
- 22 – Make a Difference Day. Start planning your project now!

## OCTOBER

- 5-7 – New Jersey/New York Fraternal Alliance Meeting, Atlantic City, New Jersey
- 16-18 – Pennsylvania Fraternal Alliance Meeting, Pittsburgh, Pennsylvania

## NOVEMBER

- 20 – **Deadline to submit articles for January/February 2023 Morning Star.**

### Donate to the LPSCU Scholarship Program

Would you like to help our young members who are facing ever increasing tuition expenses? You can by [donating now to our LPSCU Scholarship Program!](#)

Send your check payable to:

LPSCU  
P.O. Box 32  
Wilkes-Barre, PA 18703-0032

Include your name, address, phone number, and e-mail address. And be sure you remember to tell us it's a donation to fund our scholarship program! It's such a rewarding feeling to know you've helped our young members pursue and achieve their educational goals through our LPSCU Scholarship Awards.

Donations of any amount are gratefully accepted and donors will be recognized in the *Morning Star*.

**Donations of  
\$100 to \$499 will receive a Leaf  
and \$500 or more will receive a Stone  
on our Tree of Life.**

*See page 19 for more information  
on the LPSCU Tree of Life.*

## Financial Check-Up

We go to our doctor for an annual check-up to make sure we're doing alright physically. When was the last time you gave your insurance portfolio a check-up? Have you retired? Marital status changed? Have a new addition to your family? Bought a house? Moved? Take time to look over your insurance coverage to determine if your family will be able to continue their current lifestyle should something happen to you. Notify the Home Office when you move so your address can be updated accordingly. Contact your local Branch representative or call the Home Office toll-free (888-834-6614) with any questions.



## Flag Day at the Ballpark

Friday, June 17, 2022

Scranton/Wilkes-Barre RailRiders  
Game Time ~ 6:35 p.m.

### PRICE:

No cost for members of LPSCU Branch 213!  
Other LPSCU members ~ \$20.00 per person  
Non-members of LPSCU ~ \$35.00 per person

### INCLUDES:

Entry through the Mohegan Sun Club entrance.  
Dinner on covered deck/suite in right field.  
Food served from 6 p.m. to 7:30 p.m.  
Watch as one member throws out the 1st pitch.  
All the camaraderie you can get!

Please make reservations by May 1, 2022  
Ask for Theresa ~ 570-829-5410  
or 570-817-4657

Make checks payable to LPSCU Branch 213

Seating is limited! Sign up today!

## An LPSCU Educational Benefit



## 2022 ANNE (SHINAL) CICHY MEMORIAL AWARD

### \$750 AWARD

The LPSCU is proud to offer the Anne (Shinal) Cichy Memorial Award for students in the healthcare field. This award, instituted in 2006, is given in memory of Anne (Shinal) Cichy, the first LPSCU public relations director. The award is made possible through the generosity of Mr. and Mrs. Francis A. Shinal.

Those applying for the Anne (Shinal) Cichy Memorial Award must meet the following criteria:

- Must have a life insurance certificate with the LPSCU.
- Must attend an accredited college/university in the fall of 2022 on a full time basis, pursuing a degree in the healthcare field. Proof of acceptance/attendance must be provided.
- Must provide a wallet-size color photo.

The recipient of the 2022 Anne (Shinal) Cichy Memorial Award will receive \$750.

The recipient of this award shall be selected by a random drawing from among all the qualified applicants. No individual shall be eligible to receive this award more than two times.

Applicants must meet all criteria outlined above and provide data indicated on the application form to be eligible. Those applications with incomplete data or requirements will not be considered. All submitted materials become the property of the LPSCU and will not be returned.

Applications are available from the LPSCU Home Office or its website. **Applications must be post-marked by July 1, 2022.** Submit application to:

**Ladies Pennsylvania Slovak Catholic Union**

ATTN: Anne (Shinal) Cichy Award

P.O. Box 32

Wilkes-Barre, PA 18703

Phone: 570-823-3513 ❖ TF: 888-834-6614

Fax: 570-823-4464

E-mail: [lpscu@lpscu.org](mailto:lpscu@lpscu.org) ❖ Website: [www.lpscu.org](http://www.lpscu.org)



# Pittsburgh District Holds Annual Christmas Party

The Pittsburgh District held its annual Christmas party on Sunday, November 28, 2021, to celebrate the holiday season. District President Dolores Sakal welcomed all the members and guests and led them in grace before the luncheon. Banquets Unlimited in Wilmerding, Pennsylvania, was once again the location of the event. The hall was beautifully decorated for the season and the food was delicious. A beautifully decorated cake made by Branch 42 member Janet Lawrence was the special dessert. Mikey D of McKeesport entertained the group with jokes, Christmas carols, and Slovak carols on his accordion. He has become a regular at this event.

A Matching Fund event was held in conjunction with the party to benefit the Matthew Mursch, Jr. Founda-

tion. Our very generous members also brought canned goods which were donated to the food bank in Duquesne, Pennsylvania.

To add some fun to the party, a White Elephant game was played. Each person brought a small gift. These were passed around each table when a direction was said during the reading of a Christmas story. It was a lot of fun, but participants really had to listen to the story to hear each "right" or "left" and pass the gifts accordingly. A Chinese auction was also held and some lucky winners went home with extra prizes.

It was a wonderful afternoon of fraternalization and a great way to kick off the Christmas season. Many of those who attended are pictured below.





LADIES PENNSYLVANIA  
SLOVAK CATHOLIC UNION  
71 S. Washington Street  
Wilkes-Barre, PA 18701

## INFORMATION REQUEST FORM

If you would like information on any of our products or benefits, please complete the following information and mail the form to the address above:

Name: \_\_\_\_\_

Address: \_\_\_\_\_

City: \_\_\_\_\_

State: \_\_\_\_\_ Zip: \_\_\_\_\_

Phone: (\_\_\_\_\_) \_\_\_\_\_ - \_\_\_\_\_

Date: \_\_\_\_\_

Email Address: \_\_\_\_\_

Select how you would like to be contacted:

Phone  Email  Mail

### ~ REQUESTED INFORMATION ~

#### PRODUCTS

- Single Premium  3 Pay Life  5 Pay Life  
 10 Pay Life  15 Pay Life  20 Pay Life  
 Whole Life  20 Year Endowment  
 Juvenile Estate Term (Term to 25)  
 Flexible Annuity

#### FORMS

- Change of Address  Change of Name  
 Change of Beneficiary  Direct Debit  
 Cash Value  Certificate Loan  
 Cash Surrender  Lost Certificate

#### FRATERNAL BENEFITS

- Fraternalist of the Year Award  Book Buy Program  
 Youth Achievement Award  Wedding Cross  
 Newborn Benefit  Anniversary Cross

#### EDUCATION AWARDS

- Catholic Grade School  College  
 Catholic High School  Post Graduate  
 Ann (Shinal) Cichy Memorial  Bishop Grutka  
 St. John Vianney  Margaret Sabol  
 St. André Bessette, C.S.C.  Lynda (Posivak)  
 St. Theresa of the Little Flower Mohlenhoff Memorial

Comments: \_\_\_\_\_

\_\_\_\_\_  
\_\_\_\_\_  
\_\_\_\_\_

## Rev. Dianiska District to Hold Spring Meeting

The spring meeting of the Reverend Dianiska District will be held on Sunday, March 20, 2022, at 1:00 p.m. at the North End Slovak Citizens Club, 635 N. Main Street, Wilkes-Barre, Pennsylvania. All members of the LPSCU who reside in the area are invited to attend. Branch 7 from Exeter, Pennsylvania, will be hosting the meeting. Plans for the upcoming year will be discussed.

## LPSCU 2022 CATHOLIC HIGH SCHOOL AWARD \$300 One-Time Award

The LPSCU is offering a Catholic High School Award Benefit, which is a \$300 one-time award to our members who are attending a Catholic high school during the 2022-2023 academic year. Members may only receive this award one time.



The following are the Guidelines for applying for the Catholic High School Award:

- Must be a member of the LPSCU for two (2) years with \$2,000 permanent reserve life insurance certificate (excludes term insurance).
- Must be a Catholic high school freshman, sophomore, junior, or senior in the fall of 2022.
- Must provide a wallet-size color photo.

Applicants must meet all criteria and provide data indicated above to be eligible. Incomplete applications or those missing data requirements will not be considered. All materials become the property of the LPSCU and will not be returned. **Applications must be postmarked by June 30, 2022.**

Applications are available from the LPSCU Home Office or its website. Return completed applications to:

#### Ladies Pennsylvania Slovak Catholic Union

ATTN: Catholic High School Award

P.O. Box 32, Wilkes-Barre, PA 18703

Phone: 570-823-3513 ♦ TF: 888-834-6614 ♦ Fax: 570-823-4464

E-mail: [lpescu@lpescu.org](mailto:lpescu@lpescu.org) ♦ Website: [www.lpescu.org](http://www.lpescu.org)



## BISHOP ANDREW G. GRUTKA MEMORIAL SCHOLARSHIP AWARD

**\$1,000 AWARD  
(Maximum of \$2,000 per member)**

The LPSCU is proud to once again offer the Bishop Andrew G. Grutka Memorial Scholarship Award for lay persons between the ages of 18 and 35. This award, implemented at the 37th National Convention held in Merrillville, Indiana, in August 2000, is given in memory of Bishop Andrew G. Grutka, an outstanding Slovak leader who was the founding Bishop of the Diocese of Gary, Indiana.

Those applying for the Bishop Andrew G. Grutka Memorial Scholarship Award must meet the following criteria:

- Be a member of the LPSCU for two (2) years with \$5,000 permanent reserve life insurance certificate (excludes term insurance).
- Be a lay person between 18-35 years of age.
- Be of the Catholic religion (Latin Rite or Byzantine).
- Be initiated fully into the Church (Baptized, Eucharist, and Confirmed) and continuing to be eligible to receive the sacraments of the Church.
- Be a member of a Catholic parish.
- Be active in parish/diocesan/campus ministry as a lector, extraordinary minister of Holy Communion, adult altar server, catechist/aide, member of parish RCIA/C Team, youth minister, member of the Parish Pastoral Council, Finance Council, and/or other parish committees or organizations.
- Provide a Sponsor Eligibility Form from their parish to show they are active Catholics.
- Be active in an organization or activity that promotes awareness of our Slovak heritage, culture, and traditions.
- Be endorsed by his or her pastor and LPSCU Branch Secretary, with additional endorsement provided by campus minister, youth minister, or pastoral associate.
- Attend (or will attend) an accredited college/university as a full time student.
- Provide a notice of acceptance or tuition receipt for the coming scholastic year.
- Provide a wallet-size color photo.

Applicants must meet all criteria and provide data indicated above to be eligible. Incomplete applications or those missing data requirements will not be considered. All materials become the property of the LPSCU and will not be returned. **Applications must be postmarked by June 30, 2022.**

Applications are available from the LPSCU Home Office or its website. Return completed application and supporting material to:

**Ladies Pennsylvania Slovak Catholic Union**

ATTN: Bishop Grutka Award  
P.O. Box 32

Wilkes-Barre, PA 18703

Phone: 570-823-3513 ❖ TF: 888-834-6614

Fax: 570-823-4464

E-mail: [lpscu@lpscu.org](mailto:lpscu@lpscu.org) ❖ Website: [www.lpscu.org](http://www.lpscu.org)

## Member Attains Eagle Scout Rank

LPSCU member Alex Porambo recently received the rank of Eagle Scout. He is a member of Boy Scout Troop 755 located in Clamtown, Pennsylvania. Alex entered scouts in 2012 and has been an active participant as well as holding various leadership roles. He has served as assistant patrol leader, patrol leader, assistant senior patrol leader, and Order of the Arrow unit representative.

For his Eagle Scout service project, Alex chose to upgrade the East End Park, located in Tamaqua, Pennsylvania. His project included repairing two existing seesaws, building two brand new seesaws, and repairing a sandbox.

Alex was also inducted into the Order of the Arrow, which requires nomination by his peers. Only a select number of scouts are nominated and inducted into the Order of the Arrow.

Alex is currently a sophomore at Marian Catholic High School where he is consistently on the honor roll each quarter. He is a member of the varsity cross country and track and field teams. Alex is also involved with Students Against Destructive Decisions and Catholic Relief Services. Further, he is a student ambassador for Marian Catholic. After high school, Alex plans to attend college and major in information technology.

Alex is a member of Branch 156, Coaldale, Pennsylvania. He is the son of Matthew and Andrea Porambo.



**Eagle Scout Alex Porambo**

## *New Insurance Issued*

Branch	Branch Representative	Nov./Dec. 2021	Year-to-Date Total
6	Mary Ann Ewasko	\$ 25,000.00	\$ 25,000.00
37	Joan Evan	\$ 10,000.00	\$ 10,000.00
42	Dolores Sakal	\$ 2,000.00	\$ 8,000.00
64	Susan Ondrejco	\$ 3,000.00	\$ 11,000.00
		\$ 40,000.00	\$ 54,000.00

# LPSCU 3 PAYMENT LIFE PLAN

The 3 Payment Life Insurance Plan offered by the LPSCU is both an economical and beneficial plan for anyone from age 0 to 85. Under this plan, there is a minimum purchase of life insurance. For ages 0-70, the minimum purchase is \$5,000; for ages 71-85, the minimum purchase is \$2,000. Premiums are payable for three years from issue date. If the insured dies within the 3-year period following the issue date, no additional premiums are due and payable, and the face amount of the certificate is paid to the named beneficiary/ies, except as provided within the contract regarding Suicide and Contestability.

Premium payments can be made monthly, quarterly, semi-annually, or annually. The certificate becomes fully paid at the end of three years, and coverage remains in full force and effect for the entire life of the insured without any additional premium payments required. Upon the death of the insured, the face amount of the certificate is paid to the insured's named beneficiary/ies.

A member with a 3 Payment Life Plan is entitled to all

fraternal benefits of the LPSCU including educational awards, youth and adult activities, newborn benefits, prescription discount card, official publication, and discount car rental.

The 3 Payment Life Plan is perfect for both youth and adults – especially anyone who prefers to have their life insurance paid within three years. During these unstable economic times, the 3 Payment Life Plan offered by the LPSCU is cost-effective and advantageous for estate planning and can be especially helpful with the cost of funeral expenses.

To apply for this specific plan, or any other insurance plan offered by the LPSCU, contact your Branch Secretary or the LPSCU Home Office.

Listed below are the Annual and Monthly Premium Schedules for the 3 Payment Life Insurance Plan. The premiums listed are based on \$1,000 of life insurance coverage. Semi-annual and Quarterly premium rates are also available by contacting your Branch Secretary or the Home Office.

## ANNUAL PREMIUM RATES PER \$1,000

Based on 2017 CSO Male and Female Mortality Tables / Based on Age at Last Birthday

Issue Age	Annual		Monthly	
	Male	Female	Male	Female
0	\$39.00	\$34.00	\$3.51	\$3.06
1	40.00	35.00	3.60	3.15
2	41.00	36.00	3.69	3.24
3	42.00	37.00	3.78	3.33
4	43.00	38.00	3.87	3.42
5	44.00	39.00	3.96	3.51
6	46.00	41.00	4.14	3.69
7	47.00	42.00	4.23	3.78
8	48.00	43.00	4.32	3.87
9	50.00	44.00	4.50	3.96
10	51.00	46.00	4.59	4.14
11	53.00	47.00	4.77	4.23
12	54.00	48.00	4.86	4.32
13	56.00	50.00	5.04	4.50
14	58.00	51.00	5.22	4.59
15	59.00	53.00	5.31	4.77
16	61.00	54.00	5.49	4.86
17	63.00	56.00	5.67	5.04
18	64.00	57.00	5.76	5.13
19	66.00	59.00	5.94	5.31
20	68.00	61.00	6.12	5.49
21	69.00	62.00	6.21	5.58
22	71.00	64.00	6.39	5.76
23	73.00	66.00	6.5	5.94
24	75.00	68.00	6.75	6.12
25	77.00	70.00	6.93	6.30
26	79.00	72.00	7.11	6.48
27	81.00	74.00	7.29	6.66
28	83.00	76.00	7.47	6.84
29	86.00	78.00	7.74	7.02
30	88.00	80.00	7.92	7.20
31	90.00	83.00	8.10	7.47
32	93.00	85.00	8.37	7.65
33	95.00	87.00	8.55	7.83
34	98.00	90.00	8.82	8.10
35	100.00	92.00	9.00	8.28
36	103.00	95.00	9.27	8.55
37	106.00	97.00	9.54	8.73
38	109.00	100.00	9.81	9.00
39	111.00	103.00	9.99	9.27
40	114.00	106.00	10.26	9.54
41	117.00	109.00	10.53	9.81
42	120.00	112.00	10.80	10.08

Issue Age	Annual		Monthly	
	Male	Female	Male	Female
43	\$123.00	\$115.00	\$11.07	\$10.35
44	126.00	118.00	11.34	10.62
45	129.00	121.00	11.61	10.89
46	133.00	124.00	11.97	11.16
47	136.00	128.00	12.24	11.52
48	140.00	131.00	12.60	11.79
49	143.00	135.00	12.87	12.15
50	147.00	138.00	13.23	12.42
51	151.00	142.00	13.59	12.78
52	155.00	146.00	13.95	13.14
53	159.00	150.00	14.31	13.50
54	163.00	154.00	14.67	13.86
55	167.00	158.00	15.03	14.22
56	171.00	162.00	15.39	14.58
57	176.00	166.00	15.84	14.94
58	180.00	171.00	16.20	15.39
59	185.00	175.00	16.65	15.75
60	190.00	180.00	17.10	16.20
61	196.00	184.00	17.64	16.56
62	201.00	189.00	18.09	17.01
63	206.00	194.00	18.54	17.46
64	212.00	199.00	19.08	17.91
65	217.00	204.00	19.53	18.36
66	223.00	209.00	20.07	18.81
67	228.00	214.00	20.52	19.26
68	234.00	219.00	21.06	19.71
69	240.00	224.00	21.60	20.16
70	246.00	230.00	22.14	20.70
71	252.00	235.00	22.68	21.15
72	258.00	241.00	23.22	21.69
73	265.00	246.00	23.85	22.14
74	272.00	252.00	24.48	22.68
75	278.00	258.00	25.02	23.22
76	286.00	264.00	25.74	23.76
77	293.00	271.00	26.37	24.39
78	301.00	277.00	27.09	24.93
79	309.00	284.00	27.81	25.56
80	318.00	291.00	28.62	26.19
81	327.00	299.00	29.43	26.91
82	336.00	307.00	30.24	27.63
83	346.00	315.00	31.14	28.35
84	356.00	324.00	32.04	29.16
85	368.00	333.00	33.12	29.97



## LPSCU Branch 39 Spreads Christmas Cheer

Members of LPSCU Branch 39 helped to spread some Christmas cheer by sending Christmas cards to the Sisters at SS.C.M. Maria Hall, SS.C.M. Emmanuel Center, and SS.C.M. Nazareth Memory Center. Residents at these facilities, all located in Danville, Pennsylvania, include the Sisters of Saints Cyril and Methodius, the Carmelite Sisters, the Good Shepherd Sisters, and the Contemplatives of the Good Shepherd. Thanks to Sister Susan Hazenski for coordinating and facilitating this outreach project sponsored by Branch 39.



**Members of LPSCU Branch 39 address Christmas cards to residents of care facilities. From left are Agnella Yocum, Donna Car, and Matt Car.**

## In Memoriam

*Blessed are they that mourn, for they shall be comforted.*

— Matthew v.5

Name	Branch	Location
Edmund B. Brooks, Jr.	6	Wilkes-Barre, PA
Patricia A. Jelinski	19	Swoyersville, PA
Kestutis J. Matukas	21	West Lake, MA
Rosemary Oswald	40	Allentown, PA
Joseph Tibensky, Sr.*	40	Allentown, PA
Margaret Joschak	42	Pittsburgh, PA
Ethel M. Kovalick*	60	W. Hazleton, PA
Mary C. Buranosky	64	Pittsburgh, PA
David M. Rosol	65	Munhall, PA
Robert Lewandowski, Sr.	77	Lorain, OH
Elizabeth Gorentz	90	Johnstown, PA
Ashley E. Rager	90	Johnstown, PA
Maryann Mucha	158	Chicago, IL
Irene H. Falatek	196	Hellertown, PA
Donna Rinwalske	197	Wilkes-Barre, PA

\*Multiple certificates

MARCH-APRIL 2022

## LPSCU EDUCATIONAL BENEFIT



## 2022 COLLEGE AWARD

The LPSCU is offering a \$500, one-time College Award to our members who will be attending college during the 2022-2023 academic year. A total of up to 25 College Awards will be granted.

*These are the guidelines for those applying for this award:*

- ❖ Applicants must be a member of the LPSCU for two (2) years with at least a \$2,000 permanent reserve life insurance plan (excludes term insurance).
- ❖ Applicants must be a high school senior or college freshman, sophomore, or junior.
- ❖ High school seniors must provide a letter of recommendation from a school representative (ex: teacher, guidance counselor, or principal).
- ❖ High school applicants must submit an official transcript from their school that includes test scores; College students must submit documentation indicating latest overall GPA.
- ❖ Applicants must provide a detailed list of extracurricular activities, honors, and awards.
- ❖ Applicants must provide a detailed list of church, community, volunteer, and work activities including honors and awards, with reference(s) included.
- ❖ Applicants must be attending an accredited college/university on a full time basis for the 2022-2023 academic year and must submit proof of acceptance for the Fall 2022 semester.
- ❖ Applicants must submit a brief essay (no more than 200 words) on the topic "Why is life insurance important?"
- ❖ Applicants must provide a wallet-size color photo.

In order for an applicant to be eligible, all criteria outlined above must be met and all requested data provided. Applications with incomplete data or missing requirements will not be considered. All submitted materials become the property of the LPSCU and will not be returned. The LPSCU reserves the right to publish the applicant's entire essay or excerpts thereof, at its own discretion, in its official publication, *Morning Star*.

Applications are available from the LPSCU Home Office or its website. **Applications must be postmarked by April 30, 2022.** Submit applications to:

**LADIES PENNSYLVANIA SLOVAK CATHOLIC UNION**

P.O. Box 32, Wilkes-Barre, PA 18703

Phone: 570-823-3513 ❖ Toll free: 888-834-6614 ❖ Fax: 570-823-4464

E-mail: [lpescu@lpescu.org](mailto:lpescu@lpescu.org) ❖ Website: [www.lpescu.org](http://www.lpescu.org)

# SS.C.M. Appeal Update

Thank you everyone who supported last year's Saints Cyril and Methodius Appeal. It is our great pleasure to announce that **217 donors gave \$30,848.49 last year!** Here is a breakdown of donors and the amounts given:

- Parish Collections – 12 ..... \$12,641.49
- Slovak Fraternal Organizations (including Home Office donations) – 77 ..... \$ 8,125.00
- Clergy and Religious of Slovak Heritage – 32 ..... \$ 3,060.00
- Individual Donations – 96 ..... \$ 7,032.00

A direct mailing for the 2022 Appeal has been sent to local District and Branch leaders from the four Catholic Slovak fraternal organizations, members of the Slovak Catholic Federation, and previous donors. Your support is needed each year because money collected in the Appeal goes to help pay for the operating costs of the Pontifical College of Saints Cyril and Methodius in Rome, the residence of priests from Slovakia selected by their bishops to undertake graduate studies.

As of January 20, 2022, 11 donations totaling \$2,600 have been received for the 2022 Appeal.

Anyone who wishes to contribute to the 2022 Appeal but who did not receive a letter asking for a donation is asked to fill out the information in the box at the bottom of this article and mail it, along with your check payable to the Slovak Catholic Federation, to the address provided. Donations in any amount are deeply appreciated and are acknowledged. **Gifts received after November 30, 2022, will be credited to the 2023 Appeal.** Thank you again for your goodness and generosity.

*The Slovak Catholic Federation was founded in 1911 by Rev. Joseph Murgas, founding pastor of Sacred Heart of Jesus Slovak Church, Wilkes-Barre, Pennsylvania. The Federation brings together under one banner both individuals of Slovak heritage as well as Catholic Slovak fraternal organizations for cultural, religious, and educational needs. Serving as Moderator is the Right Reverend Gary Hoover, O.S.B., abbot of St. Andrew Svorad Abbey, Cleveland, Ohio. National President is Reverend Andrew S. HvozdoVIC, V.F., supreme chaplain of the Slovak Catholic Sokol and pastor of Our Lady of Victory Parish, Harvey's Lake, Pennsylvania and Gate of Heaven Parish, Dallas, Pennsylvania. Reverend Thomas A. Nasta, national chaplain of the First Catholic Slovak Union and parochial vicar with senior priest status at Our Lady of Grace Parish, Pennndel, Pennsylvania, serves as First Vice President of the Federation and is the Appeal Coordinator.*

**44th Annual SS.C.M. Appeal**

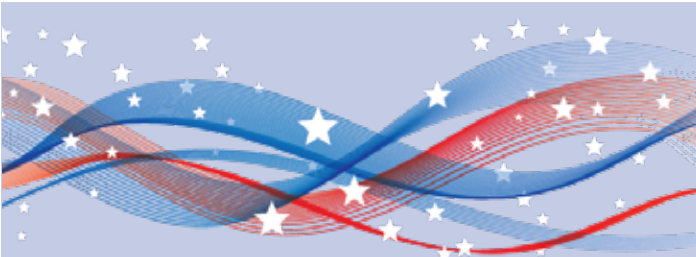
Name \_\_\_\_\_

Address \_\_\_\_\_

City \_\_\_\_\_ State \_\_\_\_\_ Zip \_\_\_\_\_

Amount \$ \_\_\_\_\_

*Please make check payable to*  
**Slovak Catholic Federation and mail to:**  
 Rev. Thomas A. Nasta  
 First Vice President, Slovak Catholic Federation  
 Our Lady of Grace Church  
 225 Bellevue Avenue, Pennndel, PA 19047-4052



*We're looking for a Shining Star in the LPSCU to be our*

## 2022 Fraternalist of the Year

Do you know a member who, through example and accomplishment, provides outstanding volunteer service?

Do you know a member who should be recognized for outstanding fraternal and volunteer efforts?

If you can answer "Yes!" to the above, then you have a "Shining Star" member to be nominated to be the 2022 LPSCU Fraternalist of the Year.

### Nomination Guidelines

- ★ Nominee must be an active member of the LPSCU.
- ★ Board of Directors and Home Office staff are not eligible.
- ★ Prior honorees are prohibited from entering.
- ★ Head and shoulder color photograph must accompany nomination form.
- ★ Decisions of the LPSCU are final.

The honoree will be presented with an award and their name may be submitted to State Fraternal Alliances having a similar award.

Nomination forms are available from the Home Office. They may be returned by mail, fax (with photo mailed), or email (with photo digitally supplied). All material sent becomes the property of the LPSCU and will not be returned.

**Nominations must be submitted to the LPSCU with a postmark no later than April 1, 2022.**

Nomination form, photograph, and any accompanying material are to be sent to:

**Ladies Pennsylvania Slovak Catholic Union**  
 Fraternalist of the Year Award  
 71 South Washington Street  
 Wilkes-Barre, PA 18701

Phone: 570-823-3513 ★ Toll free: 888-834-6614  
 E-mail: [lpscu@lpscu.org](mailto:lpscu@lpscu.org) ★ Fax: 570-823-4464





# MAKE VACCINE SHOTS LESS STRESSFUL AND PAINFUL FOR YOUR CHILD



**Getting a shot can be scary for kids. Here are some tips to comfort your child before, during, and after their shot.**

## Before

- Be honest with your child: Shots can pinch or sting, but they don't hurt for long.
- Help your child see vaccines as a good thing. Tell them vaccines keep them safe from germs that might make them sick.
- Don't tell your child scary stories or make threats about shots.



## During



- Bring a favorite toy or blanket for your child to hug.
- Hold your child in a comforting position, such as on your lap.
- Distract your child, such as with a story, a video, or a conversation.
- Ask the vaccine provider if they have a numbing ointment or spray to apply before the shot.

## After

- Hug and praise your child.
- Remind your child why vaccines are good. Tell them their body is already making germ fighters to keep them safe and healthy.
- Consider rewarding your child, such as with a sweet treat or a sticker.



**For more information, visit [CDC.GOV/CORONAVIRUS](https://www.cdc.gov/coronavirus).**

LADIES PENNSYLVANIA SLOVAK CATHOLIC UNION

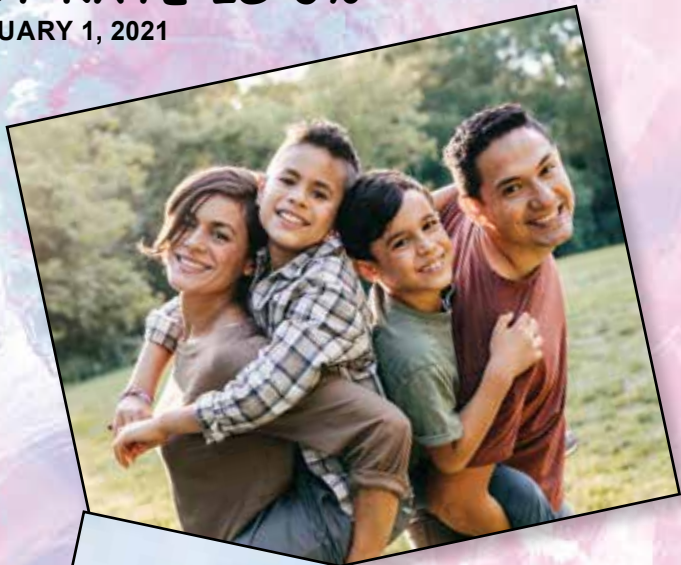
# FLEXIBLE ANNUITY

ANNUAL INTEREST RATE IS 3%\*

\*EFFECTIVE JANUARY 1, 2021

- ❑ The LPSCU Flexible Annuity is a flexible-premium, deferred annuity that accepts ongoing deposits of as little as \$100 per month.
- ❑ An annuity is a long-term investment where the interest earned is accumulated and compounded.
- ❑ Annuities are used to supplement retirement income, whereby at some point you stop paying into the annuity and start taking out.
- ❑ Upon maturity, LPSCU offers a number of distribution options, giving our members the convenience of selecting the one that is best suited for them.
- ❑ LPSCU's competitive interest rate is reviewed quarterly by the Board of Directors; however, your rate will never go below the guaranteed minimum rate established by the annuity contract.
- ❑ You can become a member of the LPSCU by purchasing an annuity and you can own an annuity regardless of your health status.
- ❑ Deposits can be made at your convenience!
- ❑ Minimum deposit is \$100.00.
- ❑ After the sixth year, there is no LPSCU penalty on annuity withdrawals.
- ❑ If the annuitant dies prior to settlement, funds on deposit are payable directly to the named beneficiary(ies).
- ❑ Settlement Options:
  - Payment of a specified amount.
  - Payments for a specified period.
  - Life Annuity.
- ❑ Payment options can be monthly, quarterly, semi-annually or annually, depending upon your needs.
- ❑ Prior to settlement, annuitant may withdraw the Cash Surrender Value at any time; however, the minimum withdrawal amount is \$250.00.

NOTE: *Withdrawals taken prior to age 59½ may be subject to a 10% Early Withdrawal Penalty by the Internal Revenue Service.*



For more information about the

## LPSCU FLEXIBLE ANNUITY

contact the LPSCU Home Office or your local Branch Secretary

71 South Washington Street | Wilkes-Barre, PA 18701

Phone 888-834-6614 | Fax 570-823-4464 | e-mail: [lpscu@lpscu.org](mailto:lpscu@lpscu.org) | [www.lpscu.org](http://www.lpscu.org)



## Msgr. Beeda District Schedules March Meeting

The Msgr. Beeda District will hold its first meeting of 2022 on Wednesday, March 9, at 6:00 p.m. at Tom's Restaurant, Route 93, Conyngham, Pennsylvania. Any LPSCU member planning to attend should contact Anita Gregory at 570-788-3263 by March 2, 2022.

## Home Office Closings for 2022

Saturday, January 1 ..... New Year's Holiday\*  
*\*Floating day to be taken by January 31st*  
 Monday, February 21 ..... Presidents' Day  
 Friday, April 15 ..... Good Friday  
 Monday, May 30 ..... Memorial Day  
 Monday, July 4 ..... Independence Day  
 Monday, September 5 ..... Labor Day  
 Monday, October 10 ..... Columbus Day  
 Thursday, November 24 ..... Thanksgiving Day  
 Friday, November 25 ..... Day after Thanksgiving  
 Friday, December 23 ..... Christmas Holiday  
 Monday, December 26 ..... Christmas Holiday  
 Friday, December 30 ..... New Year's Eve Holiday (½ day)  
 Sunday, January 1, 2023 ..... New Year's Holiday\*  
*\*Floating day to be taken by January 31st*

### DO YOU KNOW ONE?

### "Families of the LPSCU"

The LPSCU recently launched a new feature called *Families of the LPSCU* that will continue in future issues of *Morning Star*. Anyone who is a family member or who knows an LPSCU family can submit information to be published in the magazine. The submitter would write about why they have chosen to highlight the family as an "LPSCU Family." (Including a photo or two would be great as well!) All families submitted will be featured at some point. There are no boundaries as to why a family can be singled out. It could be because of how many are members or how many generations are members; how they dealt with a challenge; because of a common thread in their chosen profession, etc. Send your story to Public Relations Director Deborah McKinley at [dmckinley@lpescu.org](mailto:dmckinley@lpescu.org) or to [lpescu@lpescu.org](mailto:lpescu@lpescu.org). We hope to hear from you soon!

Remember to notify the Home Office  
if your address changes!

## Do you need a very special gift?

Purchasing a LEAF or STONE from the TREE OF LIFE Program makes a unique and perpetual gift.

# TREE OF LIFE

### RESERVATION FORM

Your inscription may be personalized to recognize a loved one or special event with "In honor of ...", "In memory of ...", or "In celebration of ...". Or you may also choose to simply have your name, the family name, or business name inscribed on a Leaf or Stone. Restrictions as to space and number of characters are listed below, based on whether you choose a fraternal Leaf (\$100) or larger Stone (\$500).

Your contribution can be paid in one installment or several. However, we will not bill you for any remaining portion. It is your responsibility to monitor your payments.

Please complete the Reservation Form below (a photocopy is also acceptable) and return it, along with your check, payable to LPSCU, to:

**LPSCU**  
**P.O. Box 32**  
**Wilkes-Barre, PA**  
**18703-0032**

*All proceeds received fund our Scholarship Program.*

Name \_\_\_\_\_

Phone \_\_\_\_\_

Address \_\_\_\_\_

City/State/Zip \_\_\_\_\_

Enclosed is (please check one):

- My first donation toward my "Tree of Life," entitling me to an engraved (Please check one) Fraternal Leaf  Fraternal Stone  when fully paid. **(Minimum of \$20 per payment.)**
- My \$100 check as payment in full, entitling me to an engraved Fraternal Leaf
- My \$500 check as payment in full, entitling me to an engraved Fraternal Stone

#### LEAF INSCRIPTION

Maximum of 4 lines with 20 characters per line, including spaces.

#### STONE INSCRIPTION

Maximum of 6 lines with 40 characters per line, including spaces.

#### PLEASE ENGRAVE MY FRATERNAL LEAF OR STONE AS FOLLOWS:

\_\_\_\_\_

\_\_\_\_\_

\_\_\_\_\_


\_\_\_\_\_


\_\_\_\_\_


PLEASE PRINT CLEARLY


# ENJOY THE BENEFITS OF BEING PART OF A COMMUNITY.

As a member of Ladies PA Slovak Catholic Union, you could save up to \$842 a year<sup>1</sup> on auto and home insurance, and you'll have access to all the advantages of being a Liberty Mutual Insurance customer.

 **24-Hour Claims Assistance**  
Online or by phone.

 **Accident Forgiveness<sup>2</sup>**  
No premium increase due to an initial accident.

 **Better Car Replacement<sup>TM3</sup>**  
If your car is totaled, we'll give you the money for a model that is one year newer.

 **24-Hour Roadside Assistance<sup>4</sup>**  
Real help when you need it.

Contact me for your free quote.

## Candice Cilvik



**Lead Sales Representative**  
72 Glenmaura National Blvd, Ste 102  
Glenmaura Professional Center  
Moosic, PA 18507  
(570) 871-6260  
Cell: (570) 793-5828  
Candice.Cilvik@LibertyMutual.com  
Client #122164

AUTO | HOME | PET | RENTERS | UMBRELLA | MOTORCYCLE | CONDO | WATERCRAFT

<sup>1</sup>Savings validated by countrywide survey of participating new customers from 3/1/2018 to 3/1/2019 who switched to Liberty Mutual. Savings may vary. Comparison does not apply in MA. <sup>2</sup>Accident forgiveness not available in CA. Terms and conditions apply. <sup>3</sup>Optional coverage in some states; availability varies by state. Eligibility rules apply. In the event of a total loss to a vehicle, we will provide Actual Cash Value of the same make, model, and equipment of a vehicle one year newer than the covered vehicle as well as 15,000 fewer miles than the vehicle that was lost. <sup>4</sup>Coverage is provided on the optional Towing and Labor Coverage endorsement. May vary by state. Applies to mechanical breakdowns and disablements only, and may be subject to limits. Coverage provided and underwritten by Liberty Mutual Insurance and its affiliates, 175 Berkeley Street, Boston, MA 02116 USA. Equal Housing Insurer. ©2018 Liberty Mutual Insurance 13849512

This organization receives financial support for offering this auto and home benefits program.



## Discount on Car Rentals

Enterprise Car Rental offers LPSCU members a discount on car rentals from over 6,500 locations throughout the United States. Where available, Enterprise will even provide free pick up and return service at the start and end of your rental period. Just enter the code 57CE441 where it asks for "Corporate Account Number or Promotion Code" and it will automatically link you with the LPSCU discount. Be sure to compare rates using this code and other promotion codes that may be available to ensure you are getting the best rate.

## Have Any News?

We welcome any news concerning honors, awards, or outstanding achievements received by our members, life events of our members (confirmations, graduations, weddings, promotions, etc.), news on a Branch or District social, or any letters, articles, or information of interest to our members.

Contact Debby McKinley, Public Relations Director  
34 Oxford Street, Tamaqua, PA 18252  
or email [lpscu@lpscu.org](mailto:lpscu@lpscu.org)

## LPSCU Matching Fund Program

On January 1, 2011, the LPSCU initiated a Matching Fund Program for our Branches and Districts. In the program's initial year, we had one Matching Fund project. We are pleased to report that the program has grown steadily ever since.

As a fraternal benefit society, the LPSCU encourages our Branches and Districts to participate in Matching Fund projects for the benefit of charitable organizations. The funds that are raised from a Matching Fund event will be matched dollar for dollar by the LPSCU, up to a maximum of \$100 for a Branch event and \$200 for a District event.

If a Branch or District prefers to make a non-monetary donation to a charitable organization, that can also be considered as a Matching Fund project but in that case, the matching donation will be limited to 50% of the maximum amount: \$50 for a Branch and \$100 for a District.

Each Branch and District is allowed to hold four Matching Fund events per year.

For more information, or to receive a copy of the Matching Fund Program Guidelines and Forms, contact the Home Office at 570-823-3513, toll free at 888-834-6614, or e-mail [lpscu@lpscu.org](mailto:lpscu@lpscu.org).

## CALLING ALL MEMBERS!

### Information About LPSCU Districts

LPSCU Districts were established to encourage LPSCU Branches and members in the same proximity opportunities to unite together for meetings, education, community activities, and social events. Did you know that **any member** can attend functions of **any LPSCU District**? That means if you are a member of a Branch in Pennsylvania but you currently live in Chicago, Illinois, you can attend and participate in functions sponsored by the district in Illinois.

Our six LPSCU Districts and their general locations are:

Pittsburgh – Western, Pennsylvania  
Rev. Baloga – Youngstown, Ohio  
Rev. Dianiska – Northeast Pennsylvania  
Lehigh Valley – Southeast Pennsylvania  
Msgr. Beeda – Hazleton, Pennsylvania  
Illiana – Illinois and Indiana

Not sure what to expect or can't make it to all the meetings or functions? That's OK! Pick up the phone or send an e-mail with your questions or concerns. You can get involved as little as you want or as much as you want!

Want to check out what's happening? Look at the Calendar of Events as well as District announcements published in the *Morning Star*.

If you would like more information or have any questions about our Districts, please contact your local Branch representative or President Theresa Kluchinski at the Home Office: phone 888-834-6614 or e-mail [Theresa@lpscu.org](mailto:Theresa@lpscu.org).

### WE HOPE TO SEE YOU AT A DISTRICT EVENT SOON!





# Junior Branch Journal

## Announcing the winners of the 2021 LPSCU Coloring Contest

### Ages 4-6



Vada Lazaro - Br. 7  
Wallace, NC  
First Place

Lillian Frankenfield - Br. 62  
Northampton, PA  
Second Place

Emmette Semanek - Br. 19  
Lancaster, PA  
Third Place

### Honorable Mention:

Diana Zemelman  
Lucy Jedlovec  
Paige Myers  
Rocco Saniatan  
Charlotte Sauers  
Eric Cerny  
Natalya Filak  
Wyatt Tucker  
Sovella Zentz  
Kennedy Gibbons

### Ages 7-9



Emma Baer - Br. 24  
Windber, PA  
First Place

Evangeline Willis - Br. 42  
Savannah, GA  
Second Place

Gavin Sauers - Br. 156  
Sewell, NJ  
Third Place

### Honorable Mention:

Malanya Armstrong  
Alexis Shipton  
Savannah Myers  
Preston Gibbons  
Connor Derenick  
Jack Gibbons  
Whitney Matvya  
Danny Zemelman  
Juliet Jedlovec  
Hayden Abda  
Cara Zemelman  
Sophia Baer  
Lillian Cerny  
Logan Collins  
Eli Matvya  
Elijah Saniatan  
Max Zentz

### Ages 10-12



Aiden Buschur - Br. 60  
Las Vegas, NV  
First Place

Cole Collins - Br. 38  
Beth, PA  
Second Place

Annabella Gibbons - Br. 132  
Ellwood City, PA  
Third Place

### Honorable Mention:

Abigail Myers  
Genevieve Baker  
Ava Collins  
Tyler Frantz  
Annalise Good  
Arianna McMahan  
Lydia Schram  
Sierra Baker  
Belle Foremny  
Matthew Mursch  
James Platt  
Anthony Willis





# Junior Branch Journal

## Easter Monday ~ Veľkonočný Pondelok

In Slovakia, the Easter celebrations continue on Monday. Early in the morning, young men try to catch young maidens and douse them with buckets, pans, and bottles of water. They are also symbolically whipped with braided willow branches. Sometimes, a young maiden might try to persuade a douser to spare her with a gift of a decorated egg, colorful ribbon, or some sausage or pastry. Some believe this custom has its roots in a pagan cult of fertility, while others believe its origins to be in Christianity and the sacrament of Baptism. This custom is very popular in Slovakia.



## Easter Traditions

Cherished traditions are what keep a family together. Easter is a wonderful time to celebrate family, create lifelong memories, and build on those traditions. Here are some fun ways for your family to start and carry on some special family times for years to come.

**Plant an Easter Garden** - It's no secret that Easter ushers in the arrival of spring. Brighten your yard with an array of blooming plants. Consider pansies, tulips, marigolds, and petunias.

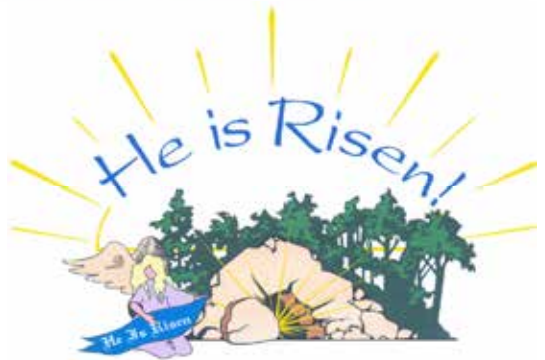
**Egg Time Machine** - Write a letter to yourself that can be placed inside a plastic egg to open next year on Easter. You can read about what you were thinking and doing when you were a year younger.

**Decorate an Easter Egg Tree** - Make a trip to the craft store and purchase some foam or plastic eggs and decorations. Attach a matching colored ribbon to each egg and hang from a live or artificial tree.

**Baking, and More Baking** - Put an apron on and break out the mixing bowls! Bunny, chick or egg-shaped cookies are perfect shapes to bake and decorate for this holiday.

**Decorate Easter Eggs** - A tried and true tradition! Dipping eggs in a brightly colored dye and watching it take hold is a delightful experience. Decorate with glitter, paint, and stickers and use them to decorate the house or Easter baskets.

**Egg the Neighbors** - Spread Easter joy by egging the neighbors with an Easter basket filled with goodies. Leave the basket on their front porch and ring the doorbell before running back home. Make sure the basket contains a "You have been egged" sign and maybe a clue about your family to help them guess who left it. This is one kind of egging your neighbors won't mind.



## PERIODICAL

## Calling All LPSCU Bowlers



The 2022 National Slovak Bowling Tournament will be held in Cleveland, Ohio, on Friday, May 13, and Saturday, May 14, 2022. The participating Slovak fraternal societies include the Slovak Catholic Sokol, First Catholic Slovak Union, National Slovak Society, and the GCU. The annual tournament begins on Friday evening for team bowling (4 members) and concludes on Saturday with doubles and singles.

If any members of the Ladies Pennsylvania Slovak Catholic Union are interested in participating in the 2022 National Bowling Tournament, please contact Theresa Kluchinski either by phone at 888-834-6614 or e-mail at [theresa@lpescu.org](mailto:theresa@lpescu.org) no later than March 20.

### 2022

## Make a Difference Day Reminder

While October may seem a long way away, it will be here before we know it. This year Make a Difference Day will be held on October 22. Branches and Districts are already planning how they will “make a difference” in the lives of others. Contact your local Branch or District to see how you can get involved and positively impact those around you.

Join us for a

# BINGO NIGHT

You're invited

## GAMES - FUN - PRIZES

◆ ◆ ◆ ◆ ◆

Wednesday, April 20, 2022  
From 5:00 - 7:00PM  
Zoom Details sent via Email  
RSVP: [susan@lpescu.org](mailto:susan@lpescu.org) by April 13  
Open to all LPSCU Members

## Do Your Part to Help the LPSCU – Sign Up a New Member!