



PATRICIA R. STEARNEY NAMED LPSCU 2016

Fraternalist of the Year

The LPSCU is proud to announce that Patricia R. Stearney of Branch 158, Chicago, Illinois, is our 2016 Fraternalist of the Year. Patricia was nominated by LPSCU National Trustee Joan Hladek, a member of Branch 109.

Pat has been a member of our organization for her entire life. In fact, she is a third generation LPSCU member. She originally belonged to Branch 109 but recently transferred to Branch 158. She has been very active in each Branch, holding offices in both. She is also a past officer of the Illiana Okres. Patricia is considered a treasured member and officer, providing advice and assistance wherever needed. She served on the LPSCU Court of Appeals for many years and has been a delegate to LPSCU Conventions since 1990.

Patricia graduated Cum Laude from Illinois Benedictine College with a Bachelor's Degree in Nursing. She was a school nurse for eight years at Maria High School in Chicago, a predominately Lithuanian institution.

Pat is a very compassionate and caring person. She has aided friends and acquaintances to acquire their medications and has helped them get to their medical appointments. Through the years she has taken the time to visit sick friends and neighbors even though she was busy taking care of her own family of six daughters and working a full time nursing job. When she heard that her high school gym teacher had passed away, Pat made the 60-mile trip to Indiana for the wake, bearing memorabilia of the beloved teacher from her high school days and bringing comfort to the deceased's family.

Patricia's hobby is quilting and sewing. She makes pillow slips with children's themes for sale at craft fairs and donates her extra runs to the Children's Ward of Loyola Hospital in Chicago. She has donated approximately \$1,000 worth of new and like new clothing to tornado victims in Coal City, Illinois.

Pat and her family were parishioners of St. Stephen's Church in Chicago, Illinois, where she was named "Mother of the Year" by the parish Fathers' Club for her many involvements in church activities. She was president of the parish Ladies Guild.

Pat's husband, Chuck, is deceased. The family is blessed with six daughters, all of whom are members of the LPSCU, and ten grandchildren who are fifth generation members of the LPSCU.

Since 2008, Pat has been treated for brain cancer and as well as breast cancer. Talk about her LPSCU spirit - She attended the 2008 Las Vegas Convention as a delegate three days after finishing her last chemo treatment!

Pat has exhibited remarkable acts of fraternalism within her Branches and the Illiana Okres and volunteer service within her community to qualify her for the distinct honor of being named the LPSCU's 2016 Fraternalist of the Year.

Congratulations, Pat! The LPSCU is very proud of you.



In This Issue

Branch and Okres News.....	3	LPSCU Convention Committees	12
New Insurance Issued.....	3	Pittsburgh Branch Member Celebrates 90 Years....	13
Semi-Annual Board Meeting Announced	4	Letters.....	13
Branch 213 Holds Matching Fund Event.....	4	2016 SCF Appeal Mid-Year Report.....	13
Contributors, Please Note	4	LPSCU 3 Payment Life Plan	14
Rev. Dianiska District Plans to Make a Difference ...	4	Msgr. Beeda District Plans Matching Fund Event ...	15
An Evening of Painting and Vino!	4	LPSCU Seeks Independent Agents/Recommenders ..	15
Minutes of the Annual Board Meeting	5-6	LPSCU Branch 60 Helps Fight Hunger	15
In Memoriam.....	6	Branch 213 to Host Children's Painting Event.....	15
2016 LPSCU Religious Awards.....	7	Easy Money Quarterly Winner.....	15
Amy Savidge Receives Bachelor of Science.....	7	SCF Seeks Contributors for <i>Good Shepherd</i>	16
Msgr. Beeda District to Hold Summer Picnic.....	7	Sister Celeste Marie Kennerty Obituary	16
2016 LPSCU College Scholarship Winners	8	Children's Trike-a-Thon Benefits St. Jude's	17
EFC Meeting Minutes.....	9	Jared Smigelski Receives Degree.....	17
The Importance of Life Insurance	9	Lithuanian Folk Dance Festival Set.....	17
2016 LPSCU Post Graduate Award	9	Cooking Corner	17
Where Are They Now?	10	Junior Branch Journal.....	18-19
SS.C.M. Sisters to Hold Summer Festival.....	11	LPSCU 1st Quarter Financial Report	20
LPSCU Convention Delegates	12	Rev. Dianiska District Plans Matching Fund Event .	20

Calendar of Events

JULY

- 1** — Deadline to apply for the 2016 Anne (Shinal) Cichy Memorial Award.
- 4** — Home Office closed for Independence Day.
- 16** — Annual Summer Festival sponsored by the Sisters of SS. Cyril and Methodius at Villa Sacred Heart, Danville, Pennsylvania, beginning at 10:30 a.m. Food, fun, crafts, games and more! Mass at 5:00 p.m. in the Basilica of the Sacred Heart. All are invited. *See page 11 for more details.*
- 20** — **Deadline to submit articles for September/October Zornicka.**
- 21** — Slovak Day at Kennywood Park
- 23** — Msgr. Beeda District's annual Summer Picnic at the home of District President Anita Gregory, 304 Turkey Path Road, Sugarloaf, Pennsylvania, beginning at 5:00 p.m. Please contact Anita at 570-788-3263 by July 11 if you plan to attend.
- 31** — The Pittsburgh District's annual Picnic/Meeting will be held at Beech Grove, White Oak Park, beginning at 1:00 p.m. Please contact Janice Mathews (412-751-9582) by July 25 if you plan to attend.

AUGUST

- 6-14** — The Msgr. Beeda District will be selling tickets for a 50-50 drawing to benefit Brandon's Forever Home in Hazleton, Pennsylvania, as part of a Matching Funds project. Contact Anita Gregory at 570-788-3263 to purchase tickets.
- 7** — The Lehigh Valley Okres is hosting its young members to an Iron Pigs Baseball Game at Coca-Cola Park in Allentown, Pennsylvania, at 1:35 p.m.
- 12** — Branch 213 hosting an Evening of Painting & Vino at Mountain Top Gift Gallery, Mountain Top, Pennsylvania, at 6:00 p.m. Reservations are required. *See page 4 for details.*
- 15** — Msgr. Beeda District Meeting at Perkins Restaurant, Route 93, West Hazleton, Pennsylvania, beginning at 6:00 p.m. Any District member planning to attend is asked to call Anita Gregory at 570-788-3263.
- 31** — Deadline to apply for the 2016 LPSCU Post Graduate Award. *See page 9.*
- 31** — Deadline to apply for one of three 2016 LPSCU Religious Awards. *Details on page 7.*
- 31** — Branch 213 hosting Children's Evening of Painting at Mountain Top Gift Gallery, Mountain Top, Pennsylvania, at 6:00 p.m. Reservations are required. *See page 15 for details.*

SEPTEMBER

- 5** — Home Office closed for Labor Day.
- 9-18** — 2016 Slovakia Heritage Tour.
- 20** — **Deadline to submit articles for November/December Zornicka.**

continued on page 11



(USPS 699-520)



ZORNICKA (Morning Star), a bi-monthly magazine, is the official publication of the Ladies Pennsylvania Slovak Catholic Union, National Headquarters, 71 South Washington Street, Wilkes-Barre, PA 18701. Send articles for publication to Margaret A. Ferri, Public Relations Director, 428 E. Frankford Street, Bethlehem, PA 18018. Articles must be received by the 25th of the month, five weeks prior to the issue date.

Printed by Triangle Press, 6720 Allentown Blvd., Harrisburg, PA 17112.

Periodical Postage paid at Wilkes-Barre, PA 18701 and additional entries.

Subscription Rate: Members — free; non-members — \$15.00 per year.

Postmaster: Send address changes only to: Zornicka (Morning Star), Ladies Pennsylvania Slovak Catholic Union, 71 South Washington Street, Wilkes-Barre, PA 18701.

OFFICE HOURS AT NATIONAL HEADQUARTERS

**Monday through Friday:
8:00 a.m. to 4:30 p.m.
Phone: 570/823-3513
Toll Free 888/834-6614
Fax: 570/823-4464
E-mail: lpescu@lpescu.org
Website: www.lpescu.org**

BOARD OF DIRECTORS

PRESIDENT

Theresa A. Kluchinski, 446 Mountain Oaks Drive, Laurel Run, PA 18706; 570/823-3513, toll free 888/834-6614; theresa@lpescu.org

VICE PRESIDENT

Anita Gregory, 304 Turkey Path Road, Sugarloaf, PA 18249; 570/788-3263; anitag13@hotmail.com

SECRETARY/TREASURER

Mary Jo Savidge, 71 South Washington Street, Wilkes-Barre, PA 18701; 570/823-3513, Fax 570/823-4464; maryjo@lpescu.org

CHAIRPERSON OF TRUSTEES

Mary Ann Ewasko, 9 Shannon Street, Wilkes-Barre, PA 18702; 570/823-6432; maryann6@ptd.net

TRUSTEES

Dolores M. Evanko, 173 Berner Avenue, Hazleton, PA 18201; 570/454-5547; jje@intergrafix.net
Joan T. Hladek, 2138 Waterbury Lane E., Sycamore, IL 60178; 815/895-0431; jhladek@lpescu.org

Margaret Jollimore, 1001 SR 292E, Harveys Lake, PA 18618-7829; 570/760-9790; jollimore.lpescu@gmail.com

James Yocum, 1738 Evergreen Drive, Hazle Township, PA 18202; 570/436-6792; jpyocum@ptd.net

FRATERNAL ACTIVITIES DIRECTOR

Susan M. Ondrejco, 234 Iliion Street, Pittsburgh, PA 15207; 412/953-5373; susan@lpescu.org

PUBLIC RELATIONS DIRECTOR

Margaret A. Ferri, 428 East Frankford Street, Bethlehem, PA 18018; 610/866-8945; mfluvbaskets@gmail.com

PITTSBURGH DISTRICT

The Pittsburgh District's Annual Picnic/Meeting will be held on Sunday, July 31, 2016, at Beech Grove, White Oak Park, beginning at 1:00 p.m. If you plan to attend, please RSVP to Janice Mathews (412-751-9582) by July 25.

Dolores Sakal



The Pittsburgh District of the LPSCU held a meeting on Sunday, April 3, 2016, at the Risen Lord Parish social hall located on the Northside of Pittsburgh, Pennsylvania. Before President Dolores Sakal of Branch 42 brought the meeting to order, a delicious lunch of soup and sandwiches was served. Twenty-five members of the District attended the afternoon meeting.

Upcoming events were discussed and scheduled. The highlight of the discussions was the convention being held in Gettysburg in June and also Kennywood's annual Slovak Day in July. The annual picnic in July and card party in the fall were also planned. Each member went home with a door prize.

Some of the members who attended the meeting are pictured on this page.

Donna Powell



REVEREND DIANISKA DISTRICT

The Reverend Dianiska District will hold its annual Christmas party on Sunday, December 4, 2016, at 1:00 p.m. at Genetti Hotel and Conference Center, Market Street, Wilkes-Barre, Pennsylvania. Branches 7, 58, and 94 will host. Members are asked to contact their Branch Secretary to make a reservation.

Susan Worth

New Insurance Issued

Branch	Branch Representative	MAR/APRIL 2016	Year-to-Date Total
38*	Mary Jo Savidge	\$ 10,000.00	\$ 10,000.00
39	James Yocum	\$ 60,000.00	\$ 60,000.00
42	Dolores Sakal	\$ 2,000.00	\$ 2,000.00
79	Renee Hladek	\$ 25,000.00	\$ 25,000.00
158	Mary Ann Siska	\$ 2,000.00	\$ 2,000.00
		\$ 99,000.00	\$ 99,000.00

**Sold through Home Office, not included in Campaign*

LPSCU Board of Directors Semi-Annual Meeting

This announcement is made to all members of the LPSCU that the Semi-Annual Meeting of the Board of Directors will convene on Friday, September 16, 2016 at 8:30 a.m. at the Genetti Hotel, Wilkes-Barre, Pennsylvania. All subsequent sessions will begin at 8:30 a.m. and will continue until all Semi-Annual Meeting business has been completed.

Members wishing to submit matters for the Board of Directors to consider at this meeting are directed to send them to the attention of Theresa Kluchinski at LPSCU National Headquarters, 71 South Washington Street, Wilkes-Barre, PA 18701 or P.O. Box 32, Wilkes-Barre, PA 18703. All correspondence relative to this Semi-Annual Meeting should be **received no later than August 19, 2016.**

LPSCU Branch 213 Holds Matching Fund Event

On May 14, 2016, a local Multiple Sclerosis Walk was held at Kirby Park in Wilkes-Barre, Pennsylvania. LPSCU Branch 213 President Mary Landmesser was a registered participant on the Land Walker Team. LPSCU Branch 213 donated monies raised for the MS Walk and, through the LPSCU Matching Funds Program, an additional \$50.00 will be donated to the Multiple Sclerosis Foundation. The Land Walker Team is pictured below at the starting line of the walk.



Branch 213 Secretary-Treasurer Theresa Kluchinski is pictured (second row, first on the right) next to Mary Landmesser and Emily Landmesser.

Contributors, Please Note

When mailing articles for publication to the Public Relations Director, please provide a phone number or email address in order to contact you, if necessary.

Rev. Dianiska District Plans to “Make a Difference” in October

Members of the Reverend Dianiska District plan to celebrate “Make a Difference Day” at their October 16, 2016, meeting by collecting cleaning supplies to be donated to The Catherine McCauley House in Plymouth, Pennsylvania. Attendees are asked to bring their supplies to the meeting, which will be held at the North End Slovak Club, Wilkes-Barre, Pennsylvania, beginning at 1:00 p.m. Branch 214 will host. Members are asked to make a reservation with their Branch Secretary if they’re planning to attend.



LPSCU Branch 213 Matching Funds Project Benefiting Laurel Run Volunteer Fire Department

Join LPSCU Branch 213 for

A FUN EVENING OF PAINTING AND VINO!

Friday, August 12, 2016 at 6:00 p.m.

Cost: \$35 per person (includes all supplies)

MOUNTAIN TOP GIFT GALLERY

273 S. Mountain Road, Mountain Top, PA

A gift card raffle will also be held!

Seating is limited. Anyone interested in attending must contact Branch 213 Secretary-Treasurer Theresa Kluchinski at 570-829-5410 or (cell) 570-817-4657 (call or text)

Payment must accompany reservation.

Anyone wishing to donate a gift card may do so by contacting Theresa at the numbers above or by mailing them to Theresa at 446 Mountain Oaks Drive, Laurel Run, PA 18706

Additional information will be provided when reservation is received.

Help support the Laurel Run Volunteer Fire Department!



LADIES PENNSYLVANIA SLOVAK CATHOLIC UNION
Minutes of the Annual Board Meeting

APRIL 1-2, 2016 ❖ WILKES-BARRE, PENNSYLVANIA

Friday April 1, 2016

Call to Order—Prayer—Pledge

President Theresa Kluchinski called the meeting to order at 8:30 a.m. and offered a prayer, which was followed by the Pledge of Allegiance. Secretary-Treasurer Mary Jo Savidge was asked for roll call; all were present.

Submission of Insurance Applications

Secretary-Treasurer Savidge reported that there were no applications received.

Submission of Conflict of Interest

Board members submitted Conflict of Interest forms. All were received.

Welcome/Remarks

President Kluchinski welcomed the Board to the Annual Meeting.

Approval of Agenda/Minutes

The agenda for this meeting was approved, along with the Minutes from the December 12, 2015 Board Conference Call, with one correction.

Correspondence/Requests

Secretary-Treasurer Savidge read all correspondence received since the previous meeting. The following requests were approved:

- ❖ The Conference of Slovak Clergy
- ❖ Holy Cross High School in Sullurpet, India

Resolutions

The following resolutions were affirmed:

- ❖ Golden Age Benefit Resolution
- ❖ 80 Year Age Resolution
- ❖ Certificate Loan Resolution
- ❖ MBA (Minor Beneficiary) Rate Resolution

Appointments

The following appointments were affirmed:

- ❖ Mr. Sam Urda; Mr. Allan Ferrone, CPS Actuary
- ❖ Kovalchik, Kollar & Co., LLP, Certified Public Accountants
- ❖ Robert Czwalina, Medical Examiner
- ❖ Attorney Jeffrey Malak, Legal Counsel
- ❖ Ms. Ellen Bush and Ms. Karen Natishan, Financial Consultants, Morgan Stanley

Financial Report

Board members were provided and reviewed the following information:

- ❖ Balance Sheet/Revenue and Expenses
- ❖ Pension
- ❖ Budget
- ❖ Market Value 2015
- ❖ Transaction Summary, December 2015 and February 2016

Presentations

President Kluchinski introduced Michael A. LoGrande with Kovalchik, Kollar & Co. LLP. Mr. LoGrande provided and reviewed the Independent Auditors' Report, the Segregation of Duties, and Internal Controls. Questions asked were answered.

President Kluchinski introduced Allan Ferrone, CPS Actuaries. Mr. Ferrone reviewed results from the annual statement, the Asset Adequacy Reserve, and provided the Board with a report on the projection of the society's results for 2016 using the society budgeted income and expense items. Questions asked were answered.

President Kluchinski introduced Ellen Bush and Karen Natishan from Morgan Stanley Wealth Management who provided the Board with the LPSCU Capital Market Overview and Employees' Pension Report, 4th Quarter 2015 through March 31, 2016. Ms. Bush and Ms. Natishan presented an overview on the following: Asset Allocation, Market Value, Maturity Distribution Graph, Top Holdings by Market Value, First Eagle and PIMCO, Ann (Shinal) Cichy, Bishop Grutka, and the LPSCU Employee Pension. Questions asked were answered.

The Board recessed for lunch.

Financials (continued)

The Board reviewed the following:

- ❖ Secretary's Prompt Payment Report
- ❖ MD&A (Management Discussion and Analysis)
- ❖ CPS Actuaries Information
- ❖ Actuarial Memorandum
- ❖ Accountants' Report

Officers' Reports

The following reports were provided and reviewed:

- ❖ President – Theresa Kluchinski
- ❖ Secretary-Treasurer – Mary Jo Savidge

The following quarterly reports were provided and reviewed:

- ❖ Vice President – Anita Gregory
- ❖ Chairperson of Trustees – Mary Ann Ewasko
- ❖ Trustees – Dolores Evanko, Joan Hladek, Margaret Jollimore and James Yocum
- ❖ Fraternal Activities Director – Susan Ondrejco
- ❖ Public Relations Director – Margaret Ferri

District Reports

The Board was provided and reviewed the District Reports.

Audit Report

Chairperson of Trustees Mary Ann Ewasko gave a verbal report that the audit was held on the afternoon of Wednesday, March 30, 2016, and all day Thursday, March 31, 2016, and after reviewing all documents, no material exceptions were found. A written report will be provided at the June 2016 Board Meeting.

continued on page 6

Minutes of the Annual Board Meeting

continued from page 5

Home Office Report

The Board was provided and reviewed the Home Office Report. The following items were covered in the Secretary-Treasurer's Annual Report:

- ❖ Building Improvements
- ❖ Membership
- ❖ Hardware/Software
- ❖ Home Office Projects
- ❖ Financials
- ❖ Website

Secretary-Treasurer Savidge reported on the corporate account the LPSCU has with Enterprise Car Rental. There have been news articles on car rental companies not following up on vehicle recalls. Secretary-Treasurer Savidge contacted Enterprise Car Rental and was assured that they follow up on all recalls.

Planning Committee

The Board was provided a report on the items that have been accomplished or completed by the Planning Committee.

Convention 2016

The Board was provided with information on the upcoming 2016 LPSCU Convention.

Unfinished Business

President Kluchinski gave an update on the following:

- ❖ Tree of Life Memorial
- ❖ Dividend Project
- ❖ LPSCU Handbook

Strategic Plan

The Board was provided a copy and reviewed the LPSCU Strategic Plan.

New Business

The following was discussed:

- ❖ Annuity Rate
- ❖ Branch Deposit Program
- ❖ Branch Support Proposal

The meeting was recessed until Saturday.

Saturday, April 2, 2016

Committees met until 9:30 a.m.

President Kluchinski called the meeting to order at 9:30 a.m.

New Business (continued)

The following was discussed:

- ❖ Board of Directors Job Description
- ❖ Ownership on Insurance Applications

Compliance Update

The Board was provided and reviewed information on various legislations.

Good of the Order

President Kluchinski notified the Board that she received a letter of resignation from Bishop Joseph V. Adamec as our Episcopal Protector.

The Board discussed the following positions:

- ❖ Episcopal Protector
- ❖ Spiritual Advisor

Calendar of Events

The Board was provided and reviewed a list of the Calendar of Events for 2016 and 2017.

Standing Committees

The Board had been provided with reports from committee chairs and after meeting this morning, the chairs gave updated reports for the following:

- ❖ Fraternalist of the Year Committee
- ❖ Campaign Committee
- ❖ Youth Achievement Award Committee
- ❖ Cookbook Committee
- ❖ Educational Committee

There being no further business, the meeting was adjourned.

Respectfully submitted,

Mary Jo Savidge

National Secretary-Treasurer

In Memoriam

Blessed are they that mourn, for they shall be comforted.

— Matthew v.5

Name	Branch	Location
Dale Washick*	6	Wilkes-Barre, PA
Marion Griglock*	7	Exeter, PA
Adele Razwad	21	West Lake, MA
Josephine Gula*	24	Windber, PA
Agnes McLaren*	28	Joliet, IL
Janet L. Schmidt	38	White Hall, PA
Cecilia T. Wack	38	White Hall, PA
Richard J. Heckel	42	Pittsburgh, PA
Andrew F. Hudak, Jr.	42	Pittsburgh, PA
Daniel Levertavish	60	W. Hazleton, PA
Eleanor Levertavish	60	W. Hazleton, PA
Andrew Milot	60	W. Hazleton, PA
Michael Kimock	62	Northampton, PA
Anna Meehan*	64	Pittsburgh, PA
Ronald Frano*	76	White Oak, PA
Helen B. Donaher*	83	Bethlehem, PA
Margaret Petrilla	83	Bethlehem, PA
Margaret I. Batko	90	Johnstown, PA
Bernard J. Simkovich*	124	Hazleton, PA
Josephine Lendacki	131	Reading, PA
Michaelene Raszkievicz*	131	Reading, PA
Verna H. Jakupcin	132	Campbell, OH
Frank Domin	156	Coaldale, PA
Victoria Pawlyna	156	Coaldale, PA
Wayne Christensen*	158	Chicago, IL
Robert D. Janesky	197	Wilkes-Barre, PA
Anne Mercincavage	197	Wilkes-Barre, PA
Elizabeth Milauskas	197	Wilkes-Barre, PA
William F. Wallo, Sr.*	213	Dallas, PA
Bertha R. Drozd*	214	Duryea, PA

*Multiple certificates



2016 LPSCU RELIGIOUS AWARDS

(For applicants entering Religious Life)

✠ *St. John Vianney (Priests)*

✠ *St. Theresa of the Little Flower (Sisters)*

✠ *St. André Bessette, C.S.C. (Religious Brothers)*

\$300 Annually

The LPSCU is offering three separate Religious Awards for members entering religious life. They are:

✠ *The St. John Vianney Award*

This award is offered to any male member of the LPSCU aspiring to the priesthood. The member may apply for the \$300 Award upon entrance into an approved program of priestly formation. The award may be renewed for each successive year until ordination, provided the member re-applies for said award.

✠ *The St. Theresa of the Little Flower Award*

This award is offered to any female member of the LPSCU aspiring to religious life. The member may apply for the \$300 award upon completion of her first year of Novitiate. The award may be renewed annually until the member is professed as a religious nun, provided she re-applies for said award.

✠ *The St. André Bessette Award*

This award is offered to a male member of the LPSCU aspiring to religious life as a brother in a religious congregation. He may apply for the \$300 award upon entrance into an approved program for religious brother formation. The award may be renewed for each successive year until completion of the program, provided the member re-applies for said award.

Following are the guidelines for applying for each of the Religious Awards. All applicants must:

- Be a member of the LPSCU for two (2) years with a minimum \$2,000 permanent reserve life insurance certificate (excludes term insurance).
- Provide a wallet-size color photo with the application.
- Re-apply each year while attending/completing studies for Religious Life (in order to receive the award each year of his/her religious training).

Applicants must meet all criteria outlined and provide data indicated to be eligible. Incomplete applications or those missing data requirements will not be considered. All materials become the property of the LPSCU and will not be returned.

Applications are available from the LPSCU Home Office or its website.

Applications for the 2016 awards must be postmarked by August 31, 2016. Submit applications to:

Ladies Pennsylvania Slovak Catholic Union
Educational Benefit Committee
P.O. Box 32
Wilkes-Barre, PA 18703

Phone: 570-823-3513 ❖ Toll free: 888-834-6614 ❖ Fax: 570-823-4464

E-mail: lpescu@lpescu.org ❖ Website: www.lpescu.org

Amy Savidge Receives Bachelor of Science Degree

Amy Savidge, daughter of LPSCU National Secretary-Treasurer Mary Jo Savidge and a member of LPSCU Branch 213, recently received her Bachelor of Science degree in Medical Imaging from Misericordia University, Dallas, Pennsylvania. Amy is looking to further her education in Radiation Therapy, a field in which she did her clinical at the VA Medical Center and the Frank M. and Dorothea Henry Cancer Center at Geisinger Wyoming Valley Medical Center. Both medical centers are located in Wilkes-Barre, Pennsylvania. We congratulate Amy and wish her much luck in her future endeavors.



Amy Savidge on her graduation day.

Msgr. Beeda District to Hold Summer Picnic

A summer picnic always gives everyone the chance to get together, relax, and just enjoy each other's company. Once again this year, the LPSCU's Msgr. Beeda District will hold its annual picnic on Saturday, July 23, starting at 5:00 p.m. The event will be held at the home of District President Anita Gregory, 304 Turkey Path Road, Sugarloaf, Pennsylvania. Any member who plans to attend is asked to contact Anita at 570-788-3263 by July 11th.

LPSCA Announces Our 2016 College Award Recipients



**EVAN
JONES**
River Vale, NJ
Freshman
Ithaca College
Ithaca, NY
Branch 124
Hazleton, PA



**RYAN
KINNEY**
Sugar Notch, PA
Sophomore
**Luzerne County
Community
College**
Nanticoke, PA
Branch 6
Wilkes-Barre, PA



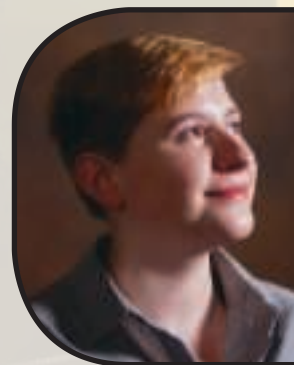
**JESSE
MACKO**
Wilkes-Barre, PA
Sophomore
**Penn State
University**
Lehman, PA
Branch 213
Dallas, PA



**JOSEPHINE
S. MANNS**
North Huntingdon, PA
Freshman
**University of
Pittsburgh**
Pittsburgh, PA
Branch 65
Munhall, PA



**LEAH
SILAY**
Allison Park, PA
Freshman
**Community
College of
Allegheny County**
Pittsburgh, PA
Branch 64
Pittsburgh, PA



**TAYLOR
SMIGELSKI**
Mountain Top, PA
Freshman
**Millersville
University**
Millersville, PA
Branch 213
Dallas, PA

**EVAN
JONES**

**RYAN
KINNEY**

**JESSE
MACKO**

**JOSEPHINE S.
MANNS**

**LEAH
SILAY**

**TAYLOR
SMIGELSKI**

*Congratulations
to All Our
Scholarship Winners!*

Minutes of the Executive Finance Committee

April 21, 2016 ❖ Home Office, Wilkes-Barre, Pennsylvania

President Theresa Kluchinski called the meeting to order and offered a prayer, followed by the Pledge of Allegiance. Attendees were: Theresa Kluchinski, president; Mary Jo Savidge, secretary-treasurer; and Mary Ann Ewasko, chairperson of trustees. Vice President Anita Gregory was excused.

The committee reviewed and accepted the Minutes from the March 3, 2016, Executive Finance Committee meeting with one change.

Correspondence/Requests

The committee acknowledged the correspondence read and approved the following:

- ❖ Youngstown Sister Cities requesting a donation of \$200.00 to renovate a monument in Slovakia. *Approved.*
- ❖ Jonas Howe, co-director of finance for the 15th Lithuanian Folk Dance Festival in Maryland requesting a donation or ad. *Approved a \$150.00 donation.*

Financial Statement

The committee reviewed the following checking accounts: M&T Bank – General Operating Account, Morgan Stanley Smith Barney Checking Account for February 2016 and March 2016, and the Home Office—Branch Deposit Account. The committee reviewed the Profit & Loss/Balance Sheet for February and March 2016.

Bond/Stock/Pension Portfolio

The committee was provided and reviewed all activity from February and March 2016, including CDs, Common Stock, Preferred Stock, and International Bonds. The Employee Retirement Plan was also reviewed.

Our Scholarship Recipients Explain

The Importance of Life Insurance

Life insurance is a fundamental asset in the foundation of a malleable yet stable financial plan. Buying a life insurance policy leaves a lasting impact on your family and your loved ones. In the unfortunate event of your passing, your family members would immediately be required to acclimate to a life without you as a source of income. With life insurance, your family will not be laden with expensive funeral bills on top of typical bills, both of which would pile on top of their constant grief of their loss.

Though death may be inescapable, the peace of mind brought on by the knowledge that your heirs will be protected financially can reduce the fear that looming uncertainty evokes. You may die today, tomorrow, or in seventy years, but your family will be taken care of financially when you are no longer able to protect them. For example, you may not live to see your child start a business, but you can leave them what they need to lead the successful life you have dreamed for them since day one.

Bailey Disler
Branch 213, Dallas, PA

Home Office

Secretary-Treasurer Savidge reported the following: Annual maintenance on the sewer line was completed and a new firewall was purchased.

Budget

The committee was provided and reviewed the budget through March 2016.

Meeting Dates

The next meeting will be set at a later date.

There being no further business, the EFC adjourned.

Respectfully submitted,

Mary Jo Savidge

National Secretary-Treasurer

2016 LPSCU POST GRADUATE AWARD

The LPSCU is offering a \$300 Post Graduate Award Benefit to our members who are awarded a Master's or Doctorate degree during the period running from July 1, 2015, to August 30, 2016. Members who qualify may receive this award one time upon receiving their Master's degree and one time upon receiving their Doctorate. (Members must apply separately and provide all the required criteria if they wish to apply for both the Master's and Doctorate Post Graduate awards).

Following are the guidelines for applying for the Post Graduate Award. All applicants must:

- Be a member of the LPSCU for at least five (5) years with a minimum \$2,000 permanent reserve life insurance certificate (excludes term insurance).
- Provide a photocopy of the Master's or Doctorate degree received.
- Provide documentation that the degree was awarded between July 1, 2015 and August 30, 2016.
- Provide a wallet-size color photo.

Applicants must meet all criteria outlined and provide data indicated in order to be eligible. Applications missing data or with incomplete requirements will not be considered. All materials become the property of the LPSCU and will not be returned.

Applications are available from the LPSCU Home Office or its website. **Applications must be postmarked by August 31, 2016.** Submit applications to:

Ladies Pennsylvania Slovak Catholic Union
Educational Benefit Committee
P.O. Box 32

Wilkes-Barre, PA 18703

Phone: 570-823-3513 ❖ Toll free: 888-834-6614

❖ Fax: 570-823-4464

E-mail: lpscu@lpscu.org ❖ Website: www.lpscu.org

Where Are They Now?

In our November/December 2015 issue, we announced that a new section would be coming to *Zornicka* featuring updates on what has happened to our various scholarship recipients of past years. This is the second of what we hope will be many success stories from members who have received our College Scholarship Grants and Post Graduate Awards, as well as our Anne (Shinal) Cichy and Bishop Grutka Memorial Awards, and our Religious Awards. We invite all our past awardees (or their parents or other relatives) to fill us in on what's been going on in their lives in the years since they received their LPSCU award. Whether it be furthering their education, marriage, starting a family, embarking on a career, travel, or any other "adventure" they've had, we'd like to hear about it. Please feel free to share your success with our readers through a brief story and a photo or two. Send your information to Margaret Ferri, 428 E. Frankford Street, Bethlehem, PA 18018 or mfluvbaskets@gmail.com. We look forward to hearing from you!

Past Scholarship Recipient Patricia A. Ferri-Kienzle

My name is Patricia A. Kienzle, formerly Patricia A. Ferri of Bethlehem, Pennsylvania. I am proud to report that the Ladies Pennsylvania Slovak Catholic Union Scholarship which was awarded to me in 1977 assisted with my ability to attend Villanova University in Villanova, Pennsylvania, and attain a B.S. Degree in Nursing. Upon graduation from Villanova in 1981, I worked at the Medical College of Pennsylvania in Philadelphia on the neurosurgery floor and then in the Emergency Room for four years. In 1985, I decided to further my education and become an advanced practice nurse by attending Nazareth Hospital School of Anesthesia where I received my certificate to be a Certified Registered Nurse Anesthetist. I sat and passed my boards in this specialty.



The Kienzle Family, from left: Victoriana, Tate, Patricia, Rand, Jenna, and Jace.

I pursued and obtained a job at Lankenau Hospital in Wynnewood, Pennsylvania. Once hired as a staff Certified Registered Nurse Anesthetist, I was given the opportunity to pursue my Master's Degree. In 1987 I received a Master's in Health Education from St. Joseph's University in Philadelphia. This degree enabled me to be both a clinical and didactic instructor at the Lankenau School of Anesthesia, which became affiliated with Villanova University where I was adjunct faculty.

I am very grateful to my parents, John and Margaret Ferri, and to the Ladies Pennsylvania Slovak Catholic Union for the support provided in allowing me to gain the educational experience which has led to my very rewarding and fulfilling career and life. I thank you sincerely!

In 1992, I married Dr. Rand E. Kienzle of Malvern, Pennsylvania, who graduated from Thomas Jefferson University Medical School and was starting his internship at St. Christopher's Children's Hospital in Philadelphia. We were blessed with four children, Victoriana, Jenna, Jace, and Tate. I am proud to state that our entire family are members of the LPSCU.

Patricia A. Kienzle
Branch 83, Bethlehem, PA

SS.C.M. Sisters to Hold Annual Summer Festival

The 43rd annual Summer Festival, sponsored by the Sisters of Saints Cyril and Methodius in Danville, Pennsylvania,



Sister Mary Anne Nemec checks on plants for sale at the Festival.

will be held on Saturday, July 16, 2016. Activities will begin at 10:30 a.m.

The Festival will feature a large Flea Market, a silent auction, home-made baked goods, handcrafted items, a book store, and Religious and Slovak articles. There will be a variety of ethnic foods such as holupky, halusky, and potato pancakes, as well as hot dogs, hamburgers, sausage, ice cream, and much more. There will be a variety of games for children and adults plus special attractions like a petting zoo, a "bounce house," raffles, and bingo.

The Summer Festival has been a blessed opportunity for the Sisters to keep in touch with former students, their parents, and family members; to reconnect with friends they've made over the years; and to make new friends. The day

never seems long enough for visiting with friends old and new.

Bus parking is available. The Festival will take place rain or shine, and will close with a Mass at 5:00 p.m. Round-the-clock tours of the Basilica of Saints Cyril and Methodius will also be available.

For more information, please call Sister Barbara Sable at 570-275-3581, Ext. 302.



Sister Jean Marie Holup (left) and Sister Denise Marie Fallat prepare baked goods.

Calendar of Events

continued from page 2

OCTOBER

2 — A Mass for the Living and Deceased Members of the Msgr. Beeda District will be held at the Church of St. Joseph at SS. Cyril and Methodius Parish, Hazleton, Pennsylvania, at 8:15 a.m. A breakfast buffet will immediately follow at Genetti's Catering, Route 309, Hazle Township, Pennsylvania. Please contact Anita Gregory (570-788-3263) by September 20 to make a reservation.

10 — Home Office closed for Columbus Day.

16 — Reverend Dianiska District Meeting at the North End Slovak Club, North Main Street, Wilkes-Barre, Pennsylvania, beginning at 1:00 p.m. Branch 214 will host. This meeting will feature a "Make a Difference Day" event. Members are asked to bring cleaning supplies for The Catherine McCauley House in Plymouth, Pennsylvania. Call your Branch Secretary to make a reservation to attend.

NOVEMBER

20 — **Deadline to submit articles for January/February 2017 Zornicka.**

24-25 — Home Office closed for Thanksgiving holiday.

DECEMBER

4 — Reverend Dianiska District's annual Christmas party at Genetti Hotel and Conference Center, Market Street, Wilkes-Barre, Pennsylvania, at 1:00 p.m. Branches 7, 58, and 94 will host. Attendees are asked to bring non-perishable food items to be donated to a local food pantry. Call your Branch Secretary to make a reservation if you plan to attend.

4 — The Lehigh Valley Okres Holiday Luncheon and Matching Fund gift basket raffle. The time and location will be announced later in the year.

23-26 — Home Office closed for Christmas holiday.

30 — Home Office closing at noon for New Year's Eve holiday.

JANUARY 2017

2 — Home Office closed for New Year's Day holiday.

20 — **Deadline to submit articles for March/April 2017 Zornicka.**



Sister Teresa Urda (left) and Sister Loretta Marie Hrubec ready the Flea Market.

Hope to see you there!

LPSCU CONVENTION DELEGATES

The following members served as delegates to the 41st National Convention of the Ladies Pennsylvania Slovak Catholic Union held June 25-26 in Gettysburg, Pennsylvania.

Branch 6

Wilkes-Barre, PA

Diane K. Jason
Eleanor Kluchinski
Susan Worth

Branch 7

Exeter, PA

Andrea Crook
Dayna Fiedorczyk
Brian P. Jollimore
Thomas J. Pesta
Charles Simalchik

Branch 19

Swoyersville, PA

Deborah Adamchak
Stephen Adamchak
Andrew Kapral
Regina Kapral

Branch 39

Hazle Township, PA

Agnella Yocum
Gina Yocum
Donna Yocum – *Alternate*

Branch 42

Pittsburgh, PA

Mary Heckel
Margaret D. Joschak
Richard Joschak
Geraldine McCabe
Elizabeth Melko
Donna Powell

Dolores Sakal

Joseph T. Senko
Florence Wackowski

Branch 52

North Braddock, PA

Theresa Hearn
Denis Rudy
Kathryn Rudy
Angela M. Skiffen
Andrea Tomasic
Bernard Tomasic
Rita Fabyanic-Robbins – *Alternate*
James Tomasic – *Alternate*

Branch 60

W. Hazleton, PA

Jonathan Gregory
Mary Ann Litchock
Cecilia Nemeth

Branch 64

Pittsburgh, PA

Mary Ann Kaylor
Thomas Kaylor
Helen Lorinc
Susan M. Ondrejco
Elva E. Silay
Edward A. Silay

Branch 65

Munhall, PA

Geraldine Kallay
Dave Mathews
Janice Mathews

Chris McGowan

Patricia McGowan

Branch 76

White Oak, PA

Celeste A. Palcsey
David A. Palcsey, Sr.

Branch 79

Whiting, IN

Carol M. Burgan

Branch 83

Bethlehem, PA

Helen Bobeck
Daniel A. Bobeck
Christie K. Ferri
John A. Ferri
John Ferri
Nancy Knoche

Branch 109

Hammond, IN

Renee Hladek
Victoria Lyn Nay
Lisa Nicolai
Sonia Hladek – *Alternate*

Branch 124

Hazleton, PA

Rev. Joseph J. Evanko
Joanne Stahura
Margaret Stahura

Branch 130

Bethlehem, PA

Anna Boncik
John Boncik
Patricia A. Kienzle
Victoriana Kienzle

Branch 158

Chicago, IL

Patricia Stearney

Branch 197

Wilkes-Barre, PA

Patricia Weiksner

Branch 213

Dallas, PA

Mary Landmesser
Bernadette Walchek

LPSCU Board of Directors

Theresa Kluchinski
Anita Gregory
Mary Jo Savidge
Mary Ann Ewasko
Dolores M. Evanko
Joan T. Hladek
Margaret Jollimore
James Yocum
Susan Ondrejco
Margaret A. Ferri

LPSCU Convention Committees

The following delegates served on committees at the recent LPSCU Convention in Gettysburg, Pennsylvania.

CREDENTIAL/

REGISTRATION COMMITTEE

Dolores M. Evanko, Chair – Br. 124
Patricia Weiksner – Br. 197
Elva Silay – Br. 64
Bernadette Walchek – Br. 213
Joanne Stahura – Br. 124

NOMINATING

Mary Ann Ewasko, Chair – Br. 6
Regina Kapral – Br. 19
Renee Hladek – Br. 109
Dolores Sakal – Br. 42
Mary Ann Litchock – Br. 60
John Ferri – Br. 83

BALLOTING

Anita Gregory, Chair – Br. 60
Deborah Adamchak, Co-Chair – Br. 19

Mary Landmesser – Br. 213

Jonathan Gregory – Br. 60

Celeste Palcsey – Br. 76

Diane Jason – Br. 6

Lisa Nicolai – Br. 109

Margaret Stahura – Br. 124

CONSTITUTION

Margaret Jollimore, Chair – Br. 58

Helen Lorinc – Br. 64

Janice Mathews – Br. 65

Mary Jo Savidge – Br. 213

Theresa Kluchinski – Br. 213

SALARY

Margaret A. Ferri, Chair – Br. 83

James Yocum, Co-Chair – Br. 39

Charles Simalchik – Br. 7

David Palcsey – Br. 76

Nancy Knoche – Br. 83

Patricia Stearney – Br. 158

SERGEANT-AT-ARMS

Joan Hladek, Chair – Br. 109

Saturday A.M.

Thomas Kaylor – Br. 64

Mary Ann Kaylor – Br. 64

Saturday P.M.

Christopher McGowan – Br. 65

Patricia McGowan – Br. 65

PLANNING

Theresa Kluchinski, Chair – Br. 213

Mary Jo Savidge – Br. 213

Anita Gregory – Br. 60

Mary Ann Ewasko – Br. 6

Pittsburgh Branch Member Celebrates 90 Years

On Sunday March 6, 2016, family and friends of Margaret Joschak, a member of LPSCU Branch 42, gathered together to celebrate her 90th birthday. Joining in the celebration were all three of Margaret's children, Richard, George, and Donna; six grandchildren, and four great grandchildren, all of whom are members of Branch 42. Also in attendance was Margaret's surviving sister, Anna Hoydich, and her family, along with many other family members and close friends.

The party was held at The Station Break in Wilmerding, Pennsylvania, where a delicious luncheon was served. All enjoyed a beautiful cake made by Margaret's granddaughters, Christina and Victoria. The decorations included many pictures of Margaret through all of the decades of her life.

Congratulations and best wishes to Margaret from all her fraternal sisters and brothers!



Margaret Joschak (seated, wearing corsage) is surrounded by her three children and other members of her extended family at her 90th birthday celebration.

Letters

Dear Ms. Savidge,

Thank you for the recent contribution of \$2,000 from the Ladies Pennsylvania Slovak Catholic Union towards a grant for student priests at the Pontifical College of SS. Cyril and Methodius in Rome. Your generosity is most appreciated.

This coming academic year, the Conference of Slovak Clergy will provide grants to 11 student priests from dioceses of Slovakia. Thank you for assisting us in this fine enterprise for the good of the Church in Slovakia.

Please be assured of my prayers and those of the members of the Conference of Slovak Clergy.

Sincerely in Christ,

Msgr. Robert J. Siffrin

Chairman of the Conference of Slovak Clergy

SAVE THE DATE!
SLOVAK DAY AT KENNYWOOD PARK
IS JULY 21, 2016

2016 SCF APPEAL MID-YEAR REPORT

The first quarter of the 2016 Saints Cyril and Methodius Appeal has recently passed. **As of March 31, the 2016 Appeal has raised \$11,992.** Most of the funds from this annual Appeal are used to aid the Pontifical Slovak College of Saints Cyril and Methodius, the residence of priests from Slovakia who are sent to Rome by their bishops for graduate studies. After receiving their degrees, these priests return to their dioceses to work as seminary teachers, Tribunal officials, and in other ministries. Donations to the Appeal also benefit those communities of men and women Religious which have a counterpart in the United States represented on the Conference of Slovak Religious.

While collections taken up in numerous parishes of Slovak ancestry at one time provided the bulk of the donations, today the Appeal relies upon the generosity of individual donors. If you have already made your donation to the 38th Annual Appeal, thank you. If not, please consider doing so by filling out the information in the box at the bottom of this article and mailing it, along with your check, to the address provided. Donations in any amount are deeply appreciated. Again, thank you for your goodness and generosity to the Annual Saints Cyril and Methodius Appeal.

The Slovak Catholic Federation was founded in 1911 by Rev. Joseph Murgas, founding pastor of Sacred Heart of Jesus Slovak Church, Wilkes-Barre, Pennsylvania. The Federation brings together under one banner both individuals of Slovak heritage as well as Catholic Slovak fraternal organizations for cultural, religious, and educational needs. Serving as Moderator is the Right Reverend Gary Hoover, O.S.B., Abbot of St. Andrew Svorad Abbey, Cleveland, Ohio. National President is Reverend Andrew S. Hvozdic, Supreme Chaplain of the Slovak Catholic Sokol and pastor of Epiphany Parish, Sayre, Pennsylvania. Reverend Thomas A. Nasta, National Chaplain of the First Catholic Slovak Union and pastor of Our Lady of Ransom Parish, Philadelphia, Pennsylvania, serves as First Vice President of the Federation and is the Appeal Coordinator.

38th Annual Saints Cyril and Methodius Appeal

Name _____ Amount \$ _____

Address _____

City _____ State _____ Zip _____

Please make check payable to
Slovak Catholic Federation and mail to:
 Dolores Evanko, National Secretary/Treasurer
 Slovak Catholic Federation
 173 Berner Avenue
 Hazleton, PA 18201

LPSCU 3 Payment Life Plan

The 3 Payment Life Insurance Plan offered by the LPSCU is an economical and beneficial plan for anyone from age 0 to 85. Under this plan, there is a minimum purchase of life insurance. For ages 0-70, the minimum purchase is \$5,000; for ages 71-85, the minimum purchase is \$2,000. Premiums are payable for three (3) years from issue date. If the insured dies within the 3-year period following the issue date, no additional premiums are due and payable, and the face amount of the certificate is paid to the named beneficiary/ies, except as provided within the contract regarding Suicide and Contestability.

The plan allows for premium payments to be made monthly, quarterly, semiannually, or annually. The certificate becomes fully paid at the end of three (3) years, and coverage remains in full force and effect for the entire life of the insured without any additional premium payments required. Upon the death of the insured, the face amount of the certificate is paid to the insured's named beneficiary/ies.

A member with a 3 Payment Life Plan is entitled to all

fraternal benefits of the LPSCU including educational awards, youth and adult activities, newborn benefits, prescription discount card, official publication, and discount car rental.

The 3 Payment Life Plan is perfect for both youth and adults – especially anyone who prefers to have their life insurance paid within three years.

During these unstable economic times, the 3 Payment Life Plan offered by the LPSCU is economical and beneficial for estate planning and can especially help with the high cost of funeral expenses.

To apply for this specific plan, or any other insurance plan offered by the LPSCU, contact your Branch Secretary or the LPSCU Home Office.

Listed below are the Annual and Monthly Premium Schedules for the 3 Payment Life Insurance Plan. The premiums listed are based on \$1,000 of life insurance coverage. Semi-annual and Quarterly premium rates are also available by contacting your Branch Secretary or the Home Office.

3 PAYMENT LIFE ANNUAL AND MONTHLY PREMIUM RATES PER \$1,000 Based on 2001 CSO Male and Female Mortality Tables — Based on Age at Last Birthday

Issue Age	Annual		Monthly	
	Male	Female	Male	Female
0	31.00	27.00	2.79	2.43
1	32.00	28.00	2.88	2.52
2	33.00	29.00	2.97	2.61
3	34.00	30.00	3.06	2.70
4	35.00	30.00	3.15	2.70
5	37.00	32.00	3.33	2.88
6	38.00	33.00	3.42	2.97
7	39.00	34.00	3.51	3.06
8	40.00	35.00	3.60	3.15
9	42.00	36.00	3.78	3.24
10	43.00	37.00	3.87	3.33
11	45.00	38.00	4.05	3.42
12	46.00	40.00	4.14	3.60
13	48.00	41.00	4.32	3.69
14	49.00	42.00	4.41	3.78
15	51.00	44.00	4.59	3.96
16	52.00	45.00	4.68	4.05
17	54.00	47.00	4.86	4.23
18	56.00	48.00	5.04	4.32
19	57.00	50.00	5.13	4.50
20	59.00	51.00	5.31	4.59
21	60.00	53.00	5.40	4.77
22	62.00	54.00	5.58	4.86
23	64.00	56.00	5.76	5.04
24	66.00	58.00	5.94	5.22
25	68.00	60.00	6.12	5.40
26	70.00	62.00	6.30	5.58
27	72.00	64.00	6.48	5.76
28	74.00	66.00	6.66	5.94
29	76.00	68.00	6.84	6.12
30	79.00	70.00	7.11	6.30
31	81.00	72.00	7.29	6.48
32	84.00	75.00	7.56	6.75
33	86.00	77.00	7.74	6.93
34	89.00	79.00	8.01	7.11
35	92.00	82.00	8.28	7.38
36	95.00	84.00	8.55	7.56
37	97.00	87.00	8.73	7.83
38	101.00	90.00	9.09	8.10
39	104.00	93.00	9.36	8.37
40	107.00	95.00	9.63	8.55
41	110.00	98.00	9.90	8.82
42	113.00	102.00	10.17	9.18

Issue Age	Annual		Monthly	
	Male	Female	Male	Female
43	117.00	105.00	10.53	9.45
44	121.00	108.00	10.89	9.72
45	124.00	111.00	11.16	9.99
46	128.00	115.00	11.52	10.35
47	132.00	118.00	11.88	10.62
48	135.00	122.00	12.15	10.98
49	139.00	125.00	12.51	11.25
50	143.00	129.00	12.87	11.61
51	148.00	133.00	13.32	11.97
52	152.00	137.00	13.68	12.33
53	157.00	141.00	14.13	12.69
54	161.00	145.00	14.49	13.05
55	166.00	149.00	14.94	13.41
56	171.00	153.00	15.39	13.77
57	175.00	157.00	15.75	14.13
58	180.00	162.00	16.20	14.58
59	185.00	166.00	16.65	14.94
60	190.00	171.00	17.10	15.39
61	196.00	175.00	17.64	15.75
62	201.00	180.00	18.09	16.20
63	206.00	185.00	18.54	16.65
64	212.00	190.00	19.08	17.10
65	217.00	194.00	19.53	17.46
66	223.00	200.00	20.07	18.00
67	228.00	205.00	20.52	18.45
68	234.00	210.00	21.06	18.90
69	240.00	215.00	21.60	19.35
70	246.00	221.00	22.14	19.89
71	252.00	226.00	22.68	20.34
72	258.00	232.00	23.22	20.88
73	265.00	238.00	23.85	21.42
74	272.00	244.00	24.48	21.96
75	278.00	250.00	25.02	22.50
76	286.00	256.00	25.74	23.04
77	293.00	262.00	26.37	23.58
78	301.00	269.00	27.09	24.21
79	309.00	276.00	27.81	24.84
80	318.00	283.00	28.62	25.47
81	327.00	291.00	29.43	26.19
82	336.00	298.00	30.24	26.82
83	346.00	306.00	31.14	27.54
84	356.00	314.00	32.04	28.26
85	368.00	323.00	33.12	29.07

Msgr. Beeda District to Hold Matching Fund Event

The Msgr. Beeda District plans to hold a 50-50 Drawing in conjunction with the Ladies Pennsylvania Slovak Catholic Union's Matching Fund Program. Proceeds from this raffle will be donated to Brandon's Forever Home, located at 187 N. Church Street, Hazleton, Pennsylvania. The home is a non-profit organization created to raise awareness about children in foster care and their need for permanent, loving homes. We ask that you please support this special project. Tickets will be available for sale from August 6-14, 2016. Anyone interested in purchasing tickets for the drawing may contact Anita Gregory at 570-788-3263.

LPSCU Seeking Independent Agents/Recommenders

The Ladies Pennsylvania Slovak Catholic Union is seeking licensed independent agents/recommenders to represent the Society and market our Life Insurance and Annuity products. Interested individuals do not need to be a member of the Society. Currently we are licensed to sell in Pennsylvania, Ohio, New Jersey, Indiana, Illinois, Michigan, and Massachusetts.

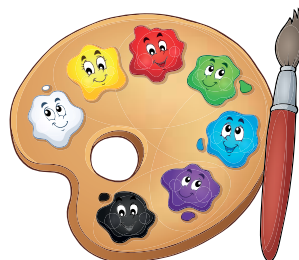
Please call or e-mail President Theresa Kluchinski at 888-834-6614 or Theresa@lpscu.org.

LPSCU Branch 60 Helps Fight Hunger



Members of LPSCU Branch 60 recently collected non-perishable food items for the "Stamp Out Hunger" food drive. The items collected are then distributed to local food pantries. Pictured left to right are Mary Ann Litchock, Anita Gregory, and John Gregory, all officers of LPSCU Branch 60.

ATTENTION ALL CHILDREN!



LPSCU
Branch 213
is holding a
Youth Activity
**ALL AGES
WELCOME!**

Join LPSCU Branch 213 for

A FUN EVENING OF PAINTING!

Wednesday, August 31, 2016 at 6:00 p.m.

Cost: \$10 per child for LPSCU Members
\$15 for non-members (includes all supplies)

MOUNTAIN TOP GIFT GALLERY

273 S. Mountain Road, Mountain Top, PA

Seating is limited. Anyone interested in attending must contact Branch 213 Secretary-Treasurer Theresa Kluchinski at 570-829-5410 or (cell) 570-817-4657 (call or text)

Payment must accompany reservation.

Easy Money!

Want to earn \$25?
Send us your e-mail address!



E-mail lpscu@lpscu.org providing us with your name, address (including city, state and zip) and date of birth. It's that easy!

You will be entered into a quarterly drawing to win \$25.00!

The only other requirement is - you must be a member of the LPSCU!

Not a member and want to be?
E-mail us for information!

Easy Money!

QUARTERLY WINNER

This quarter's winner is
Heidi M. Gift
Congratulations, Heidi!

SCF Seeks Contributors for 2016 *Good Shepherd*

Dobry Pastier (The Good Shepherd), published annually by the Slovak Catholic Federation, is a compilation of articles which are of interest to Slovak-American Catholics. The Federation is currently seeking material for inclusion in the 2016 edition. While the scope of the annual is broad, encompassing the areas of heritage, history, religion, traditions, travel, and personal experience, items of a solely political nature cannot be accepted. **The deadline for all articles is August 1, 2016. Due to the publication schedule, items received after the deadline cannot be considered for this year's edition.** The annual will be available for distribution in the latter part of 2016.

To facilitate the editing and printing of *The Good Shepherd*, the following guidelines are established for authors who would like their work to be considered for inclusion in the annual. Submissions and any questions can be sent to T.L. Wagner, at dobrypastierscf@gmail.com.

General Information

- All articles must be type-written, double-spaced, preferably in Microsoft WORD format in 12 point, Times New Roman font, or a similarly easy to read type. For the sake of ease in editing, please avoid capitalizing words or entire sentences needlessly, the excessive use of exclamation points, unnecessary quotation marks, etc. The article layout should be similar to that of pieces printed in daily newspapers and magazines.
- It is strongly preferred that **English** articles be e-mailed to T.L. Wagner at dobrypastierscf@gmail.com. It is faster and more cost effective to work from a digitally submitted text than having to re-type an entire hard copy.
- **DO NOT SUBMIT SCANNED COPY.** It is virtually impossible for the editor or printer to effectively modify scanned material to conform to the annual's printed format.
- If it is not possible for an article to be e-mailed, an original "hard copy" can be mailed to T.L. Wagner, 2215 Coronado Avenue, Youngstown, OH 44504-1308. The "hard copy" should either be typed or legibly hand-written by the author. Please DO NOT send photocopies or any photographs. If photos are essential to the story and cannot be sent digitally, contact the editor, who will then determine the most effective manner to obtain them and assure their proper handling.
- To be accepted for publication, articles should be between three and ten typewritten pages. Articles of less than three pages or more than ten pages will not be accepted.

Use of Photographs

- If using photographs within the article, **they must be included at the same time the article is e-mailed to the editor.** When sending images digitally, send them as separate JPGs to accompany the article. Please indicate where the photos are to be placed within the body of the article. It is absolutely essential that all persons, places and/or situations depicted in the photograph be clearly identified. It is helpful to provide more information than may seem necessary, although captions may be edited down.
- In the event that an article is e-mailed but the photos are not included as attachments, please make the editor aware of the situation at the time of submission. The editor will contact the sender to determine the most effective manner to handle the photos. Again, it is necessary that the photos are properly identified and labelled as to where they are to be placed within the article. If at all possible, photos should always accompany the article for which they are intended.
- Captions must be included with the photographs. Additional explanatory information may also be submitted. This allows the editor and subsequently the reader to better understand the relationship of the photo to the content of the article.

Articles in Slovak

- Slovak articles can be e-mailed to T.L. Wagner, but a hard copy which includes all accents and appropriate punctuation **MUST** also be mailed to the editor's address. (Please indicate that the article was both mailed *and* e-mailed.)
- Frequently, accent marks, diacritical characters, and other special characters do not come through properly when e-mailed, including the punctuation format common to the Slovak language. Providing a hard copy of the article, with the proper marks, will save valuable time and minimize errors.

As editor, T.L. Wagner retains the right to correct grammatical errors, delete repetitious text, rearrange material for the sake of clarity, etc. The editor also retains the right to determine the appropriateness of articles for the publication. Be assured that the editor will NOT substantially change the author's idea and concept without first consulting the author.

The Communications/Membership Committee, on behalf of the entire Slovak Catholic Federation National Board, expresses our sincere thanks to all of the faithful contributors to **The Good Shepherd**. These contributions, year after year, ensure that the Slovak Catholic Federation is able to provide a quality annual that celebrates and preserves our Catholic faith, Slovak heritage, and sense of community. It allows our readers to stay in touch with what is happening within the Catholic Church, Slovakia, and the Slovak-American community. Thank you.

T.L. Wagner, Editor, *The Good Shepherd*
dobrypastierscf@gmail.com
Office: 330-747-3777 / Cell: 724-967-1539

In Memoriam

Sister Celeste Marie Kennerty, SS.C.M.

Sister Celeste Marie, SS.C.M. (Helen Louise Kennerty) died on Friday, June 3, 2016, at Geisinger Medical Center in Danville, Pennsylvania. Sister was born in Charleston, South Carolina, on November 30, 1931, the daughter of James H. Kennerty and Maude Mary (Kennedy) Kennerty.



Her elementary education was completed at Saint Andrew and Saint Patrick schools in Charleston. Sister Celeste Marie graduated from Bishop England High School in Charleston and received a B.A. from Marywood University in Scranton, Pennsylvania.

She entered the Sisters of Saints Cyril and Methodius, Danville, on February 1, 1954, was received as a novice on August 11, and made her first profession of vows on August 1, 1956. She would have celebrated 60 years as a religious Sister later in June of this year.

Sister Celeste Marie was missioned to parish schools in Bridgeport, Connecticut; Gary, Indiana; Yonkers, New York; Charleston; and Danville, Swoyersville, Hazleton, and Berwick, Pennsylvania. She variously taught grades 2, 3, 4, 5, 6 and 8 and served as local co-ordinator, principal, assistant to the principal, and administrative assistant. She also taught Religion and Math. From 1998-2001, Sister was administrator at Maria Hall in Danville. She took up residence at Maria Hall in 2005 and served in a variety of ministries.

She was preceded in death by her parents and three brothers, Lawrence, Daniel, and Bernard. She is survived by her sister-in-law, Mrs. Dolores Kennerty of Charleston.

The transferal rite followed by recitation of the Rosary took place at 10 a.m. on Wednesday, June 8, at Maria Hall, followed by the wake service. The Mass of Christian Burial was at 1:30 p.m., also at Maria Hall, with the Reverend Gerard Heintzelman as main celebrant.

Memorial gifts may be sent to the Sisters of Saints Cyril and Methodius, Villa Sacred Heart, Danville, PA 17821.

Children's Trike-a-Thon Benefits St. Jude's Hospital

On April 15, 2016, Carmella and Luca San Severino participated in a Trike-a-Thon from 10:00 a.m. to noon at Kids Villa Learning Center in Urbana, Maryland. Approximately 38 families and 60 children participated in the event to benefit St. Jude's Children's Research Hospital in Memphis, Tennessee. Carmella and Luca had "donated sponsors" from Pennsylvania, Maryland, and New York. Their combined donations totaled \$537. The event itself raised a total of \$2,150 for St. Jude's. This year's amount more than doubled last year's total of \$945.

Carmella and Luca are the children of Nicole Ferri and Dominic San Severino of New Market, Maryland. Their grandparents are Jack and Christie Ferri of New Market and Richard and Gabriella San Severino of Myerstown, Pennsylvania. Their maternal great-grandparents are John and Margaret Ferri of Bethlehem, Pennsylvania. Paternal great-grandparents are Frank and Millie San Severino of Long Island, New York.

The entire Ferri Family are members of LPSCU Branch 83 and 130. Carmella and Luca belong to Bethlehem Branch 130.



Luca San Severino pushes "Thomas the Train" at the Children's Trike-a-Thon.



Carmella San Severino (right) rides her scooter to raise money for St. Jude's Children's Hospital.

INSURANCE POLICY CHECKLIST



- ✓ **Beneficiary:** *Is my named beneficiary living?*
- ✓ **Address:** *Is my current address on file with the Home Office?*

It is very important that this information be correct and up-to-date. Please contact the Home Office or your Branch Secretary to make any necessary corrections or changes.

Jared Smigelski Receives Degree from King's College

Jared Smigelski, a member of LPSCU Branch 213, recently received his Bachelor of Science degree in Computer Science with a minor in Mathematics from King's College, Wilkes-Barre, Pennsylvania. Jared played baseball for the Monarchs for the past four years. He did his internship at Benco Dental in Pittston, Pennsylvania, where he also accepted a job as an associate developer in the Application Development department. We wish him luck.



Jared Smigelski

Lithuanian Folk Dance Festival Set for July 3

The 15th North American Lithuanian Folk Dance Festival will be held on Sunday, July 3, 2016, at Royal Farms Arena, 201 W. Baltimore Street, Baltimore, Maryland, from 1:00 to 4:00 p.m. The festival will consist of 1,800 dancers from six countries: the United States, Canada, England, Sweden, Israel, and Lithuania. The dancers will perform intricately choreographed dances set to traditional Lithuanian folk music, while wearing native costumes.

Tickets for the festival are \$55 for adults and \$25 for children 3-12; the event is free for children under 3. For tickets, go to <http://www.ticketmaster.com/event/1500502CD1062F9A>.

The event website is www.sokiusvente2016.org.

Cooking Corner

CHOCOLATE CHIP PEANUT BUTTER BARS

- | | |
|---------------------|------------------------------|
| ¾ cup peanut butter | 1 tsp. vanilla |
| ½ cup margarine | 2¼ cup flour |
| ¾ cup sugar | 1 tsp. baking soda |
| ¾ cup brown sugar | 1 12-oz. bag chocolate chips |
| 2 eggs | |

Cream peanut butter, margarine, sugar, eggs, and vanilla. Stir flour and baking soda; add to creamed mixture. Blend well. Fold in chocolate chips. Spread in greased 13 x 9 pan. Bake at 375 degrees for 25-30 minutes. Cool and cut into bars.





Junior Branch Journal

Make Your Own Fireworks in a Glass!

1. Fill a tall, clear drinking glass with room-temperature water, leaving about an inch of space at the top.
2. Pour 3 tablespoons of vegetable oil into a short glass and add 1 to 2 drops each of red and blue food coloring. Gently stir the mixture once or twice with a fork to just barely break up the drops. (Don't overmix! You want a collection of both small and large beads.)
3. Slowly pour the mixture into the water, then sit back and watch. Within about 30 seconds, the beads will begin to burst through the oil, releasing tiny red and blue streamers and miniature fireworks. Feel free to ooh! and aah!



National 'Give Something Away' Day

National Give Something Away Day is celebrated annually on July 15. This is a day to give something to someone. It can be something that is a basic necessity like shoes or clothing or something more frivolous like flowers or a balloon bouquet. Spend time with someone in a hospital or just call someone to let them know you are thinking about them. National Give Something Away Day is a day to pay it forward and do something nice for someone, whether it is someone you know or a total stranger.

HISTORY

National Give Something Away Day was submitted by Linda Eaton Hall-Fulcher. The Registrar at National Day Calendar declared National Give Something Away Day to be observed annually on July 15.

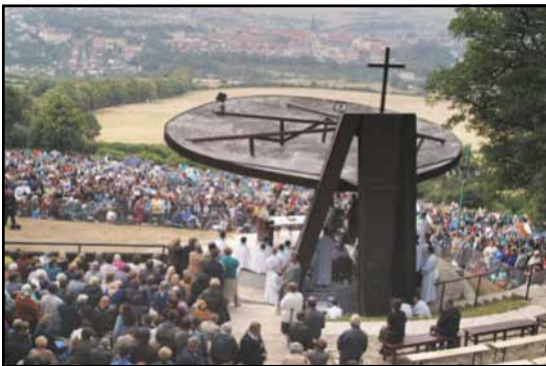
WAYS TO CELEBRATE

Celebrate by buying lunch for someone in need. Buy a cup of coffee for the person behind you in line at the coffee shop. Go through your closet and donate clothing you no longer wear to a good cause. Post on social media using #GiveSomethingAwayDay to encourage others to join in paying it forward.

The Feast of the Visitation

The Feast of the Visitation is when Mary visited her cousin, Elizabeth. In Slovakia, many pilgrims journey to Levoča to celebrate this feast.

A hill with spectacular views over the town and countryside above Levoča, Mariánska hora is the location of the Basilica of the Visitation of the Blessed Virgin Mary (in Slovak - *Bazilika navštívenia Panny Márie*) built between 1906 and 1922. The church contains an ancient statue of the Virgin Mary.



The 2003 Pilgrimage at Mariánska hora.

A chapel has existed in this location since at least the 13th century. It is thought that the location was used as a refuge by townsfolk of Levoča during the Tatar invasions of the time. It may also have been attached to a hospital for sufferers from leprosy. The chapel was enlarged and rebuilt many times, including a Baroque church in 1766. However, the increasing number of pilgrims visiting the site necessitated a larger structure. At the request of the local bishop, Pope John Paul II upgraded the church to a Basilica Minor in 1984. The Pope visited the site himself on July 3, 1995, when about 650,000 pilgrims gathered for the occasion. The annual pilgrimage, on or around July 2 (the Feast of the Visitation), still draws a very large number of participants.

Junior Branch Journal



Kapušany Castle

The little village of Kapušany lies northeast of the city of Prešov in Eastern Slovakia. Nearby on a tall, cone-shaped mountain is where this Kapusany Castle once stood. History about the castle is limited, but there are several legends which surround this fortress.

This important castle had many owners. One of the most noted was the Kapy family, which built and rebuilt the castle numerous times.

One legend involves the Kapy brothers. During prosperous times, the castle was always filled with boisterous games. Laughter could be heard for miles around. Unfortunately, those good times came to a halt when the Kapy brothers somehow offended the king. He ordered that the castle be leveled to the ground.

Hearing that the king's army was on its way, the Kapy brothers devised a plan. They decided to negotiate a truce by giving the king part of their treasury. Jan Kapy ordered his wife to sew a sack in which to carry some precious gems and stones to the king. She hurried to her chambers and a short time later handed her husband and his brother a beautifully sewn sack. To her surprise, the brothers complained that it was too big and cut the sack to make a much smaller one. Jan's wife said, "You can't put such a small sack on the back of a horse. Everyone will laugh at us!" But Gregor Kapy knew of a peasant in the village who owned a small horse. They bought the horse, filled the sack with a meager amount of gems, and sent their servants to the king to negotiate the truce.



The king pushed the bag of gems aside as he thundered, "Tell your lords I do not need their gold or treasures, but obedience!" The servants learned that the king had more pressing matters on his mind. His beloved young son lay on his deathbed. No one knew the cause of his illness or how to help the dying boy.

The servants had an idea and returned to the king's residence offering a gift of the small horse for the boy. The little horse clopped to the boy's bed and nuzzled him. A noticeable change came over the prince and he sat up, wanting to be placed on the horse. His sickness soon gave way to laughter and he was declared cured.

The king faced the servants and thanked them. "Tell your lords that I do not need their treasures, but will accept the gift of the horse." To show his appreciation, he immediately dispatched a letter to call back the army he had sent to destroy the castle.

"From now on we will all live in peace," said the king, adding that the brothers must never defy him again.

Have Some Fun with Your 411

What's in a number? A lot, apparently! Take our Phone Number Challenge and see how your seven digits add up.

Here's what to do:

1. Multiply the first three digits of your phone number (not including your area code) by 80.
2. Add 1.
3. Multiply by 250.
4. Add the number formed by the last four digits of your phone number.
5. Add that four-digit number again.
6. Subtract 250.
7. Divide by 2.

What number did you get?

PERIODICAL

Ladies Pennsylvania Slovak Catholic Union 1st Quarter Report

Assets	1st Quarter 2016	1st Quarter 2015
Investments.....	\$ 15,579,044.00	\$ 15,233,829.00
Certificate of Deposit.....	\$ 96,000.00	\$ 96,000.00
Cash on Deposit.....	\$ 109,526.00	\$ 324,573.00
Mortgage Loans.....	\$ -	\$ -
Real Estate Owned.....	\$ 128,193.00	\$ 126,912.00
Other Assets.....	\$ 40,591.00	\$ 46,752.00
Totals	\$ 15,953,354.00	\$ 15,828,066.00
Liabilities & Fund Balance	1st Quarter 2016	1st Quarter 2015
Fund Balance.....	\$ 3,879,489.00	\$ 4,092,271.00
Interest Maintenance Reserve.....	\$ 127,149.00	\$ 153,899.00
Amt. Retained as Trustee.....	\$ 134,289.00	\$ 128,695.00
Aggregate Reserve-Life Certificates.....	\$ 11,175,377.00	\$ 10,910,719.00
Other Liabilities.....	\$ 637,050.00	\$ 542,482.00
Totals	\$ 15,953,354.00	\$ 15,828,066.00
Revenues	1st Quarter 2016	1st Quarter 2015
Premium Income.....	\$ 62,868.00	\$ 50,680.00
Investment Income.....	\$ 197,335.00	\$ 234,692.00
Income - Other.....	\$ 9,396.00	\$ 9,615.00
Totals	\$ 269,599.00	\$ 294,987.00
Expenses	1st Quarter 2016	1st Quarter 2015
Death Claims.....	\$ 56,771.00	\$ 81,269.00
Endowments.....	\$ 7,286.00	\$ 22,282.00
Cash Surrenders.....	\$ 10,295.00	\$ 11,875.00
Annuity Benefits.....	\$ -	\$ 30,193.00
Dividends.....	\$ -	\$ -
Increase in Aggregate Reserves.....	\$ 63,000.00	\$ (13,000.00)
Commissions (new and renewals).....	\$ 237.00	\$ 442.00
General Operating Expenses.....	\$ 76,411.64	\$ 88,669.84
Officers and Committee Expenses.....	\$ 1,653.86	\$ 872.07
Actuarial/Accounting Expense.....	\$ 33,975.00	\$ 4,800.00
Investment Mgt. Fee.....	\$ 5,936.67	\$ 6,096.57
Official Publications.....	\$ 20,992.73	\$ 24,965.76
Travel Expense.....	\$ 601.10	\$ 25.88
Bureau and Association Dues.....	\$ 3,150.00	\$ 4,935.00
Donations.....	\$ 1,475.00	\$ 525.00
Scholarships.....	\$ -	\$ -
Fraternal Activities.....	\$ 2,377.00	\$ 2,153.88
Insurance Taxes, Licenses & Fees.....	\$ 10,842.00	\$ 11,512.00
Sub Total	\$ 295,004.00	\$ 277,617.00
Net Gain/Loss From Operations.....	\$ (25,405.00)	\$ 17,370.00
Net Realized Capital Gain (Loss).....	\$ (3,647.00)	\$ (2,208.00)
Total	\$ (29,052.00)	\$ 15,162.00

Rev. Dianiska District Plans Matching Fund Event

In conjunction with the LPSCU Matching Fund Program, members of the Rev. Dianiska District will hold a Special Gifts Raffle at their Christmas party on December 4, 2016, at the Genetti Hotel and Convention Center, Wilkes-Barre, Pennsylvania.

The raffle will benefit the Commission on Economic Opportunity (CEO), 819 Hunter Highway, Tunkhannock, Pennsylvania. CEO operates a food pantry to assist families and also offers utility and housing assistance. In addition to the raffle, the District will also be collecting non-perishable food items to donate to the CEO food pantry.

We are asking our District members or any LPSCU member to support this worthwhile project by donating a gift, purchasing raffle tickets, or by attending the Christmas party. Hosts for this year's celebration are Branches 7, 58, and 94.

For further information, please contact Margaret Jollimore at 570-760-9790 (or email jollimore.lpscuc@gmail.com) or Helen Pirillo at 570-693-1306.

**SIGN UP A
NEW MEMBER
TODAY!**