

# ZORNIČKA

Ladies  
Pennsylvania  
Slovak  
Catholic  
Union



1898-2009

MORNING STAR

Vol. 68, No. 809

January-February 2009



REV. PHILIP A. ALTAVILLA, V.E.  
National Spiritual Advisor



THERESA A. KLUCHINSKI  
National President



ANITA GREGORY  
National Vice President



MARY JO SAVIDGE  
National Secretary-Treasurer



MARY ANN EWASKO  
National Chairperson of Trustees



DOLORES M. EVANKO  
National Trustee



JOAN T. HLADEK  
National Trustee



MARGARET JOLLIMORE  
National Trustee



ELIZABETH ANN MELKO  
National Trustee



MARGARET A. FERRI  
National Public  
Relations Director



CECILIA B. GAUGHAN  
National Fraternal  
Activities Director

## Meet Your 2008-2012 LPSCU Board of Directors and National Officers

*Bios on page 14*



# In This Issue

Spiritual Advisor's Message .....	3	Member Interviews Grandfather .....	13
Annual March for Life .....	4	Cooking Corner .....	13
LVO Receives JHD Excellence Award .....	4	Meet Your 2008-2012 Board/Officers .	14-16
Elizabeth Melko Completes Program .....	4	Special Bylaws Insert .....	Centerfold
A Message from the National President ...	5	Fraternalist of the Year Sought .....	17
EFC Meeting Minutes .....	6	LPSCU Youth Achievement Award .....	17
New Insurance Issued .....	6	New Member Welcomed .....	17
Rev. Dianiska District Celebrates .....	7	New Insurance Benefits for Members ...	18
Slovak Couple Receives Award .....	8	Lehigh Valley Okres Celebrates .....	19
SCF Hosts Slovak Pastoral Seminar .....	8	'Good Shepherd' Authors Sought .....	20
3rd Quarter Financial Report .....	8	SCF Announces Annual Appeal .....	20
LPSCU Bids Ambassador Farewell .....	9	Illinois Fraternal Congress Scholarships ..	21
In Memoriam .....	9	Rev. Dianiska District Makes a Difference ..	21
Branches 83 & 196 Make a Difference ...	10	Unique 'Thank You' Received .....	21
Mother's/Father's Day Tribute Program .	10	LPSCU 2009 Educational Benefits .....	22
Branch 83 to Mark Centennial .....	11	IFC Seeks Youth and Adult FOTY .....	23
Campaign 2009 .....	11	SCF Announces National Convention ...	23
Disaster Relief Efforts .....	11	JET Plan Offer Extended .....	24
Anna Ondrejco Wins Scholarship .....	11	ScriptSave .....	25
Letters .....	12, 24-25	Junior Branch Journal .....	26-27
Slovaks Get Visa Waiver .....	12	Gazebo Dedicated for Late Member .....	28

## Calendar of Events

### JANUARY

- 22** — Annual March for Life in Washington, D.C. *See page 4 for details.*
- 25** — **Deadline to submit articles for March/April Zornicka.**

### FEBRUARY

- 1** — Deadline to apply for Illinois Fraternal Congress Scholarship. *See page 21 for details.*
- 1** — Deadline to nominate Illinois LPSCU members as the Illinois Fraternal Congress's Youth and Adult Fraternalists of the Year. *See page 23.*
- 28** — Deadline to apply for an LPSCU College Scholarship Award.

### MARCH

- 8** — Rev. Dianiska District meeting at St. Mary of the Immaculate Conception Parish Center, 134 S. Washington Street, Wilkes-Barre, Pennsylvania, at 1:00 p.m. Branches 6, 48, and 213 will host.
- 25** — Deadline to nominate a member for the 2009 Youth Achievement Award and the 2009 Fraternalist of the Year Award. *See page 17.*
- 25** — Deadline to apply for the Anne (Shinal) Cichy Memorial Award.
- 25** — **Deadline to submit articles for May/June Zornicka.**
- 27-29** — LPSCU Annual Meeting, Home Office, Wilkes-Barre, Pennsylvania
- 31** — Deadline to submit messages for Mother's/Father's Day tributes. *See page 10 for details.*

### APRIL

- 3** — Deadline for Branch 83 members to make a reservation to attend the Branch's Centennial Celebration. *See April 19.*
- 19** — Centennial Celebration of Bethlehem Branch 83 with a 10:30 a.m. Mass at the Incarnation of Our Lord Church in Bethlehem, Pennsylvania, followed by a luncheon at the Candlelight Inn, Bethlehem. Make reservations with Mary Shannon (610/866-1625) or Mary Ann Ackerman (610/866-3130). *More details on page 11.*
- 26-29** — Slovak Catholic Federation Convention in the Lehigh Valley, Pennsylvania. *See page 23.*

### MAY

- 1** — Deadline to submit articles for SCF's 2009 Good Shepherd. *See page 20 for details.*
- 2** — Join Hands Day

*continued on page 23*



(USPS 699-520)

ZORNICKA (Morning Star), a bi-monthly magazine, is the official publication of the Ladies Pennsylvania Slovak Catholic Union, National Headquarters, 71 South Washington Street, Wilkes-Barre, PA 18701.

Send articles for publication to Margaret A. Ferri, Public Relations Director, 428 E. Frankford Street, Bethlehem, PA 18018. Articles must be received by the 25th of the month, five weeks prior to the issue date.

Printed by Triangle Press, 6720 Allentown Blvd., Harrisburg, PA 17112.

Periodical Postage paid at Wilkes-Barre, PA 18701 and additional entries.

Subscription Rate: Members — free; non-members — \$15.00 per year.

Postmaster: Send address changes only to: Zornicka (Morning Star), Ladies Pennsylvania Slovak Catholic Union, 71 South Washington Street, Wilkes-Barre, PA 18701.

#### OFFICE HOURS AT NATIONAL HEADQUARTERS

**Monday through Friday:  
8:00 a.m. to 4:30 p.m.  
Phone: 570/823-3513  
Toll Free 888/834-6614  
Fax: 570/823-4464  
E-mail: [lpescu@lpescu.org](mailto:lpescu@lpescu.org)  
Website: [www.lpescu.org](http://www.lpescu.org)**

#### SECRETARY/TREASURER

Mary Jo Savidge, 71 South Washington Street, Wilkes-Barre, PA 18701; 570/823-3513, Fax 570/823-4464

#### BOARD OF DIRECTORS

##### SPIRITUAL ADVISOR

Rev. Philip A. Altavilla, V.E., Our Lady of the Snows Parish, 301 South State Street, Clarks Summit, PA 18411-1599; 570/587-5191

##### PRESIDENT

Theresa A. Kluchinski, 446 Mountain Oaks Drive, Laurel Run, PA 18706; 570/829-5410

##### VICE PRESIDENT

Anita Gregory, 304 Turkey Path Road, Sugarloaf, PA 18249; 570/788-3263

##### CHAIRPERSON OF TRUSTEES

Mary Ann Ewasko, 9 Shannon Street, Wilkes-Barre, PA 18702; 570/823-6432

##### TRUSTEES

Dolores M. Evanko, 173 Berner Avenue, Hazleton, PA 18201; 570/454-5547

Joan T. Hladek, 2138 Waterbury Lane E., Sycamore, IL 60178; 815/895-0431

Margaret Jollimore, RR 2, Box 374, Harvey's Lake, PA 18618-9512; 570/333-5371

Elizabeth Melko, 100 Bryn Mawr Court West #513, Pittsburgh, PA 15221; 412/242-0419

##### FRATERNAL ACTIVITIES DIRECTOR

Cecilia B. Gaughan, 325 Florida Avenue, Whitehall, PA 18052; 610/433-4610

##### PUBLIC RELATIONS DIRECTOR

Margaret A. Ferri, 428 East Frankford Street, Bethlehem, PA 18018; 610/866-8945



# Spiritual Advisor's Message

## Keeping a Positive Attitude in the New Year



Fr. Altavilla

“It was the best of times, it was the worst of times; it was the age of wisdom, it was the age of foolishness; it was the epoch of belief, it was the epoch of incredulity; it was the season of Light, it was the season of Darkness; it was the spring of hope, it was the winter of despair; we had everything before us, we had nothing before us; we were all going directly to Heaven, we were all going the other way.”

These famous lines open the novel *A Tale of Two Cities* (1859), which is the second historical novel by Charles Dickens. The story is set in London and Paris before and during the French Revolution. It depicts the plight of the French proletariat (a term used to identify those in a lower social class) under the brutal oppression of the French aristocracy in the years leading up to the French Revolution, and the corresponding savage brutality demonstrated by the revolutionaries toward the former aristocrats in the early years of the revolution.

I can recall having this novel assigned as required reading during one of my Literature classes while studying at Bishop Hoban High School (now Holy Redeemer High School) in Wilkes-Barre, Pennsylvania. For some strange reason, these opening lines of the novel became etched in my psyche. While these words, as penned by Charles Dickens, refer to situations from the 18th century, I think it is safe to say that, considering the many things that have been rapidly happening in the world around us, these words can certainly describe our current “state of affairs” in this 21st century.

We are privileged to live in a time of unbelievable growth and prosperity. We have seen such spectacular things like the fall of communism, and the rise of democracy and freedom in countries once held captive by oppressive forms of government. Advances in modern technology and communications enable us to have important information at our fingertips in seconds. The advances in medical science have produced research, medications, surgeries, and treatments allowing an incredible quality and longevity to human life. Certain movements and programs have awakened in us a greater respect for the dignity of all human persons. Renewal that has occurred even in the Catholic Church has invited and encouraged more participation on the part of lay men and women in the life and ministry of the Church.

Yet despite the growth and prosperity that our country — and our world — has experienced, countless thousands still live in poverty. Sadly, in recent days, we have seen how greed, mismanagement, and poor planning have so dramatically impacted the economic situation in our nation. From losses in the stock market to the sad reality of banks, car manufacturers, and other institutions failing to remain viable and

healthy, to the unbelievable number of people losing their homes, retirement benefits, and other resources necessary to live a worry-free life — WOW! Despite our advances in medicine and technology, we still have forces which seek to “play God” by devaluing and destroying human life — especially life in the womb through the evil of abortion.

Yes, these are the best of times, and for many, these are the worst of times. No matter how we interpret them, these are our times. As we begin this New Year, 2009, and as we soon begin a new era of leadership in our country, with the inauguration of a new President, we do stand at a unique crossroads. While there are many aspects of life that we cannot control, as

we stand at these crossroads of hope or despair, it is important to remember that, despite the chaos and uncertainty around us, the one thing we can control is the attitude that we allow to motivate us as we approach life and the difficulties we may, for a time, have to endure.

If we maintain a negative, pessimistic attitude about things, then life is going to be very

tough and impossible to bear. Sadly, there are many who allow themselves to be paralyzed by fear, anger, despair, or bitterness. Yet, as followers of Jesus, we are reminded that despite all the difficulties around us, our faith and trust in God encourage us to live in hope. This Christian hope challenges us to be positive and optimistic, believing that, in God’s time and in God’s way, all shall be well.

Again, using the words of Charles Dickens, we have a choice to either be overcome by the Darkness of evil and sin that surrounds us, or we can walk confidently in the Light of God’s love. Trusting in the power of God’s love may not make the stock market rise or help fill our pockets and homes with material goods, but such trust will help us not allow the difficulties of life to destroy us.

Quite frankly, I have found that people who choose to live by a very angry, bitter approach to life waste more time and energy in trying to remain angry and bitter than in putting their energy into seeking opportunities to help better their situation in life. Like a wheel in the mud, they just get stuck. Unfortunately, some people become so consumed by an “oh, woe is me” attitude, that they waste valuable time and resources which could be used in helping themselves grow and change. It is so important for us to remind ourselves that, even on our worst day, there are those who have it much worse. This kind of “reality check” can help us stay focused and grateful for what we do have and not become so consumed by only complaining about what we think we don’t have or what we feel we need to be truly happy.

*... we are reminded that, despite all the difficulties around us, our faith and trust in God encourage us to live in hope.*

*continued on page 28*

## ANNUAL MARCH FOR LIFE

Thursday, January 22, 2009 — Washington, D.C.

For the last several years, members of the LPSCU have been invited to participate in the annual March For Life in Washington, D.C. The LPSCU joins other Slovak/Catholic fraternal organizations (First Catholic Slovak Ladies Association, First Catholic Slovak Union, and the Slovak Catholic Sokol) in this peaceful demonstration showing our support of and respect for the unborn.

### **Wilkes-Barre/Hazleton Area**

A bus will leave Wilkes-Barre, Pennsylvania, with a stop in Hazleton, Pennsylvania. Local Branches and Districts help sponsor the cost of members wanting to attend. Anyone interested in attending can call Theresa Kluchinski at 888/834-6614 or 570/823-3515 for more information.

## Lehigh Valley Okres Receives 2008 Join Hands Day Excellence Award

The Lehigh Valley Okres of the Ladies Pennsylvania Slovak Catholic Union is proud to be the recipient of a 2008 JOIN HANDS DAY Excellence Award sponsored by the National Fraternal Congress of America.

The Okres's project was selected to receive one of ten JOIN HANDS DAY Excellence Awards from among thousands of volunteer events that developed youth and adult partnerships on May 3, 2008. The awards were announced on September 5, 2008, at the 122nd Annual Meeting of the NFCA held in Washington, D.C. Each award-winning project received \$1,000 and a distinctive glass plaque engraved with the name of the organization and the participating groups. The Okres shared its monetary award with the participants of its project.

In selecting Excellence Award winners, the most important consideration is the quality of the youth and adult partnership in planning and conducting the event. The NFCA notified the District that it chose the Lehigh Valley Okres project for its demonstration of a solid youth and adult partnership, as well as a notable impact on the community.

For its 2008 JOIN HANDS DAY project, the Lehigh Valley Okres chose "We Support Our Troops" as its theme, collecting items for the military. In addition to the parishioners of the former SS. Cyril and Methodius Church in Bethlehem, Pennsylvania, and the parishioners of St. John the Baptist Slovak Catholic Church in Allentown, Pennsylvania, there were four organizations and two government leaders that partnered with the Okres in this project. The group filled 36 large boxes with snacks, personal care items, videos, music CDs, magazines, cards, phone cards, and socks. The packages were then mailed to our troops in Iraq and Afghanistan.

The Lehigh Valley Okres is honored to have been selected for a 2008 JOIN HANDS DAY Excellence Award. Okres members are proud of the nationwide recognition the JOIN HANDS DAY Excellence Award has brought to the LPSCU.

## Trustee Elizabeth Melko Completes BOLD Program

The Business Operations and Leadership Development (BOLD) Program is a new Highmark program designed to provide developmental experiences for selected employees to enhance their career opportunities in leadership or staff positions. Elizabeth Melko, an employee with Highmark in Pittsburgh, Pennsylvania, for 12 years, recently completed this program. To qualify, she had to meet eligibility requirements which included grade level, years of employment with Highmark, and "exceeds expectations or higher" on her last two performance appraisals.



**Elizabeth Melko**

BOLD is a year-long program designed to help participants enhance their business knowledge and develop leadership competencies. Participants meet one-on-one with an assigned mentor who provides guidance and support. While working in their current positions, they participate in a variety of career-broadening learning experiences and training opportunities, allowing them to grow professionally as individuals and as team members. Upon completion of the program, participants receive a \$1,000 achievement award.

Elizabeth successfully completed the BOLD program and graduated this past September.

As for what she learned from the effort, Elizabeth states, "The essence of teamwork is when everyone can set aside the need for attaining personal goals and personal recognition to work collaboratively towards a common goal. In true collaboration, a team member knows when to lead and when it is more effective to let someone else take the lead. A true measure of success is the achievement of the common goal that benefits the organization as a whole." Elizabeth added, "We need fresh thinking and new learning if we are to avoid responding to today's problems with yesterday's solutions while tomorrow's challenges engulf us."

Elizabeth and her mother, Anna Melko, are members of LPSCU Branch 42 in Pittsburgh. Elizabeth is a new LPSCU National Trustee, having been elected to that office at the 39th National Convention held last July in Las Vegas, Nevada. She is also Secretary of the Pittsburgh District.

The LPSCU congratulates Elizabeth for completing this program. We wish her continued success in her professional endeavors.

## PRIVACY NOTICE CORRECTION

In publishing our Privacy Commitment notice in last month's issue, we inadvertently used an old file which had incorrect contact information. Please note that anyone who requires further information regarding the LPSCU's privacy policies should contact Secretary-Treasurer Mary Jo Savidge in writing at Ladies Pennsylvania Slovak Catholic Union, 71 South Washington Street, Wilkes-Barre, PA 18701.

We apologize for any confusion this may have caused.



# *A Message from the National President*

Dear LPSCU Members,

I would like to take this opportunity to wish you and your family a Happy and Healthy New Year!

Calendar year 2008 has certainly been one of peaks and valleys. The National Convention held in Las Vegas, Nevada, in July reported that the LPSCU in the first quarter of 2008 (March 2008) had reported its first gain from operations in years. That was especially good news and there was no reason to believe each quarter thereafter wouldn't follow. Unfortunately, with the crisis in the financial market, our expectations to end the year with a positive change in surplus were short lived.

The financial turmoil that began in August continues through the present day and there is clearly no expectation, at least in the short term, for circumstances to reverse. However, as in the past, the financial markets will rebound.

The question is, "How was the LPSCU impacted?" The organization, as of June 30, 2008, had \$15.8 million in assets. Of the \$15.8 million, \$12.1 million (76.6%) is invested in bonds and/or cash deposits; \$1.3 million (8.3%) is in preferred stocks; and \$2 million (12.8%) is in common stocks. Our portfolio, whether it is in bonds, preferred stocks, or common stocks, is diversified so that the losses impacting a specific sector in the market will not cripple our entire portfolio. While the portfolio has suffered due to the recent developments in the financial industry and the equity markets, our financial solvency remains strong. Our solvency as of September 30, 2008, remains at 143%, which means for every \$1.00 in liabilities we have \$1.43 in assets. In filing our September quarterly statement with the appropriate regulators, the Board of Directors determined that a decline of surplus would be evident as of December 31, 2008. The amount of the decline, however, is based on many factors. Some of those factors include the amount of expenses paid by the organization and market fluctuations.

The LPSCU, having just celebrated its 110th anniversary, has been through many difficult situations over those 110 years. We need to "tighten our belts" so that we can continue to be a viable source of life insurance protection in the fraternal insurance industry! At a recent Board of Directors meeting it was decided to act upon the following recommendation to help contain the expenses of the LPSCU and help us through these difficult times:

- Pursuant to the LPSCU Bylaws, Board of Directors members are to receive a cost of living increase as of the 1st of each year. The cost of living index for 2009 will be 5.8%. Upon my recommendation, all elected Board members have agreed to refuse their 2009 increase.
- Currently the LPSCU offers 100% paid HMO Health Insurance/Dental/Vision. The Board approved that employees begin to contribute 12.5% of their HMO Health/Dental/Vision beginning in January 2009.
- For the calendar year 2009, the Board has suspended the payment of dividends. This was the most difficult decision for the Board to make; however, it was agreed that it made more economic sense to place a one year moratorium on the payment of dividends during this time.

As I stated previously, the LPSCU remains extremely solvent and your Board of Directors continues to monitor the finances so that we will continue to remain that way! In looking to our future, the Board has approved the following which opens additional revenue streams while meeting the financial needs of our membership:

- The necessary documents have been filed with the appropriate Insurance Departments so that we can begin offering an annuity product. This will take a few months until we obtain all the necessary approvals, so watch the *Zornicka* for more information.
- We have entered into an agreement whereby our existing members will have an opportunity to purchase Long Term Care, Supplement Insurance and Dental Insurance. (See page 18 of this issue for more information.)
- We continue to review and increase our benefits offered to our membership, with the most recent addition being our partnership with Enterprise Rent-A-Car, whereby our members receive a 5% discount on all rentals when utilizing our Membership Code!

As always, I am available to discuss any issues that you, our members, may have. Feel free to call me at any time.

Fraternally,  
*Theresa A. Kluchinski*  
LPSCU National President

# Minutes of the Executive Finance Committee

## Home Office, Wilkes-Barre, Pennsylvania

September 24, 2008

President Theresa Kluchinski called the meeting to order and offered a prayer, followed by the Pledge of Allegiance.

Attendees: Theresa Kluchinski, president; Anita Gregory, vice president; Mary Jo Savidge, secretary-treasurer; and Mary Ann Ewasko, chairperson of trustees.

The committee reviewed and accepted the minutes from the August 27, 2008, Executive Finance Committee meeting.

### Correspondence and Requests

The committee acknowledged all the correspondence read, approving the following:

- ❖ Western Pennsylvania Slovak Hour requesting the purchase of tickets for the 26th Annual Dinner-Dance Celebration at \$35.00 each and an ad in the program book. *(Approved 10 tickets and \$100.00 ad)*
- ❖ Pennsylvania Fraternal Congress requesting donation for scholarship program and charitable project. *(Approved \$50.00 for each)*
- ❖ Slovak Benedictine Fathers requesting donation for Mass. *(Approved \$25.00 for Mass for the deceased members of the LPSCU)*
- ❖ Polish Union of the USA requesting an ad in their 30th Anniversary Debutante Ball program book. *(Approved \$100.00)*

### Financial Statement

The committee reviewed the following checking accounts as of August 31, 2008: M & T Bank – General Operating Account, M & T Bank – Home Office Checking Account and Smith Barney Checking Account. The committee completed a review of the Balance Sheet and Revenue/Expense statement for August 31, 2008. Graphs illustrating month-end balances for 2008 for the assets, liabilities, fund balance, premium income, investment income, and investments were presented and reviewed.

### Bond/Stock/Pension Portfolio

The committee was provided copies of all reports from August 31, 2008, reviewing all activity, including CDs, Common Stocks, Preferred Stocks, Bonds, International Investments, Schedule D – Part 3 and 4. The Employee Retirement Plan was also reviewed.

### Other Business

The committee discussed the 2009 budget.

There being no further business, the EFC adjourned.

Respectfully submitted,

**Mary Jo Savidge**

National Secretary-Treasurer

October 29, 2008

President Theresa Kluchinski called the meeting to order and offered a prayer, followed by the Pledge of Allegiance.

Attendees: Theresa Kluchinski, president; Anita Gregory, vice president; Mary Jo Savidge, secretary-treasurer; and Mary Ann Ewasko, chairperson of trustees.

The committee reviewed and accepted the Minutes from the September 24, 2008, Executive Finance Committee meeting.

### Correspondence and Requests

The committee acknowledged all the correspondence read.

### Financial Statement

The committee reviewed the following checking accounts as of September 30, 2008: M & T Bank – General Operating Account, M & T Bank – Home Office Checking Account and Smith Barney Checking Account. The committee completed a review of the Balance Sheet and Revenue/Expense statement for September 30, 2008. Graphs illustrating month-end balances for 2008 for the assets, liabilities, fund balance, premium income, investment income, and investments were presented and reviewed.

### Bond/Stock/Pension Portfolio

The committee was provided copies of all reports from September 2008, reviewing all activity, including CDs, Common Stocks, Preferred Stocks, Bonds, International Investments, Schedule D – Part 3 and 4. The Employee Retirement Plan was also reviewed.

### Other Business

The committee discussed the 2009 budget and the LPS 2001 Submission.

There being no further business, the EFC adjourned.

Respectfully submitted,

**Mary Jo Savidge**

National Secretary-Treasurer

## New Insurance Issued

State	Branch Representative	Oct./Nov. 2008	Year-to-Date Total
PA	Theresa Kluchinski	\$ 10,000.00	\$ 143,000.00
PA	Dolores Evanko		\$ 110,000.00
PA	Elva Silay	\$ 25,000.00	\$ 45,000.00
PA	Mary Ann Ewasko		\$ 43,000.00
PA	Janice Mathews		\$ 38,000.00
PA	Joan Ellen Friendak		\$ 33,000.00
PA	Cecilia Gaughan		\$ 32,000.00
PA	Agnes Janinek		\$ 30,000.00
PA	James Tomasic		\$ 29,000.00
IN	Joan Hladek		\$ 25,000.00
PA	Dorothy Lichman	\$ 4,000.00	\$ 24,000.00
PA	Home Office		\$ 23,000.00
PA	Margaret A. Ferri		\$ 20,000.00
PA	Cecilia Sarocky		\$ 20,000.00
PA	Deborah Adamchak		\$ 17,000.00
PA	Joan Evan	\$ 12,000.00	\$ 12,000.00
PA	Charles Simalchik		\$ 10,000.00
PA	Verna Prawdzik		\$ 10,000.00
PA	Margaret Jollimore		\$ 10,000.00
PA	Eleanore Papst		\$ 10,000.00
PA	David Palcsey		\$ 5,000.00
PA	Mary Agnes Stromberg		\$ 4,000.00
PA	Theresa Olshemski		\$ 2,000.00
PA	Barbara Janicko		\$ 2,000.00
PA	Marion DiCalogero		\$ 1,000.00
PA	James Yocum	\$ 1,000.00	\$ 1,000.00
PA	Mary Ann Siska	\$ 1,000.00	\$ 1,000.00
		\$ 53,000.00	\$ 700,000.00



# Rev. Dianiska District Celebrates Joint Anniversaries



**Debbie Adamchak addresses the gathering on the history of the District.**

Philip Altavilla, LPSCU spiritual advisor, offered the invocation. District Treasurer Debbie Adamchak read a history of the District.

On Sunday, September 28, 2008, the National Officers of the LPSCU and members of the Reverend Dianiska District attended Mass at Holy Trinity Church, Hughes Street, Swoyersville, Pennsylvania, to celebrate the 110th anniversary of the LPSCU and the 65th anniversary of the District. Immediately following the Liturgy, a brunch was held at the Ramada Hotel, Public Square, Wilkes-Barre, Pennsylvania.

National President Theresa Kluchinski and District President Mary Ann Ewasko welcomed members and guests. Father



**The children in attendance receiving their gifts.**



**National Officers – Seated, from left: Anita Gregory, Theresa Kluchinski, Mary Jo Savidge, and Mary Ann Ewasko. Standing, L-R: Marge Ferri, Cecilia Gaughan, Joan Hladek, Dolores Evanko, Elizabeth Melko, and Margaret Jollimore.**

The children who were present were given a commemorative LPSCU piggy bank with \$1.10 inside and a giant gift bag from the District. Everyone was given a ticket for the numerous door prizes that were donated by Branches and District members.

The District presented the national officers with a bottle of Strawberry Asti Spumonti with a Blue and White Wooden Rose attached, inscribed “LPSCU 1898-2008.”

As a special surprise in honor of President Kluchinski’s

birthday, her daughter Mary presented Theresa with a cake and everyone sang “Happy Birthday” to her.



**Mary Rose Kluchinski presents a birthday cake to her mom, Theresa.**

**Susan Worth**

## Congratulations to QCHS Student of the Month

The Quakertown Senior High School and Rotary International “Student of the Month” for November 2008 was Jaclyn Miller, a member of LPSCU Branch 156. She was nominated for the award by Quakertown teachers, Ms. Byatt, Mrs. Bratina, and Mrs. Wert.



**Jaclyn Miller**

Jackie is a member of the junior class at the high school and is an outstanding student and leader. She takes Advanced Placement and honors classes and is also a member of the National Honor Society.

Ms. Byatt described Jackie as “an active member of the class of 2010.”

Jackie recently did an outstanding job decorating the halls of the school for spirit week. She enjoys volunteering her time with the Anti-Smoking Club, the Quakertown Food Pantry, and Best Buddies, which pairs high school students with disabled students who need support.

Jackie also enjoys running and is a member of the high school’s varsity indoor track team. She plans to attend college in the future to become an orthodontist.

Jaclyn is the daughter of Dean and Judith Ann Miller and the granddaughter of Mike and Joan Ellen Frendek. All are members of Branch 156, of which Joan Ellen is Secretary and Mike is President.

The LPSCU congratulates Jackie on her outstanding academic accomplishments. We wish her continued success in her future endeavors.

# Slovak Couple Receives Heritage Award

Slovak Honorary Consul Joseph Senko of Pittsburgh Branch 42 recently presented Sue Ondrejco (of Pittsburgh Branch 64) and her husband Rudy with the Heritage Award from the Western Pennsylvania Slovak Cultural Association. The presentation took place at the Association's 4th Testimonial Awards Dinner at Pittsburgh's Greentree Radisson Hotel on September 14, 2008.

Since 1979, the Ondrejcos have hosted the Western Pennsylvania Slovak

Radio Hour every Sunday from 3:00 to 4:00 p.m. on Pittsburgh radio station WPIT-73 AM. They have also directed the Pittsburgh Slovaks folk ensemble since 1977. The dancing and singing group performs regularly in the Pittsburgh area and has also entertained in

Washington, D.C., Ontario, Canada, and in Slovakia.

We congratulate Sue and Rudy Ondrejco on this well deserved honor and thank them for their efforts to promote Slovak music, dance, and heritage.

## SCF Hosts Midwest Slovak Pastoral Seminar

Seventy-two people attended the most recent Midwest Slovak Pastoral Seminar in Chicago, Illinois. The Midwest District of the Slovak Catholic Federation sponsored the annual seminar, which took place September 28, 2008, at the Motherhouse of the Sisters of Saint Casimir.

Professional filmmaker Susan Marcinkus showed her documentary, "Pictures of the Old Country," which traces her search for her maternal grandmother's roots in Slovakia. The film has been shown on PBS stations nationwide. A question and answer session followed.

Afterwards, attendees enjoyed a catered buffet luncheon.

**Robert Ľapák Magruder**



**The SCF Midwest District Board of Directors with seminar speaker Susan Marcinkus (seated, center).**

## Ladies Pennsylvania Slovak Catholic Union 3rd Quarter Report

<b>Assets</b>	<b>3rd Quarter 2008</b>	<b>3rd Quarter 2007</b>
Investments .....	\$ 12,680,739.00	\$ 14,226,517.00
Certificate of Deposit .....	\$ 1,247,000.00	\$ 1,229,332.61
Cash on Deposit .....	\$ 624,472.00	\$ 364,428.39
Mortgage Loans .....	\$ 24,718.00	\$ 46,939.00
Real Estate Owned .....	\$ 143,243.00	\$ 124,544.00
Other Assets .....	\$ 67,313.00	\$ 54,480.00
<b>Totals .....</b>	<b>\$ 14,787,485.00</b>	<b>\$ 16,046,241.00</b>
<b>Liabilities &amp; Fund Balance</b>	<b>3rd Quarter 2008</b>	<b>3rd Quarter 2007</b>
Fund Balance .....	\$ 4,416,921.00	\$ 5,700,514.00
Interest Maintenance Reserve .....	\$ 337,265.00	\$ 356,957.00
Amt. Retained as Trustee .....	\$ 49,108.00	\$ 41,585.00
Aggregate Reserve-Life Certificates .....	\$ 9,662,665.00	\$ 9,305,648.00
Other Liabilities .....	\$ 321,526.00	\$ 641,537.00
<b>Totals .....</b>	<b>\$ 14,787,485.00</b>	<b>\$ 16,046,241.00</b>
<b>Revenues</b>	<b>3rd Quarter 2008</b>	<b>3rd Quarter 2007</b>
Premium Income .....	\$ 158,067.00	\$ 230,065.00
Investment Income .....	\$ 593,180.00	\$ 553,252.00
Income - Other .....	\$ 40,053.00	\$ -
Profit/Loss - Sale of Bonds/Stocks .....	\$ -	\$ -
<b>Totals .....</b>	<b>\$ 791,300.00</b>	<b>\$ 783,317.00</b>
<b>Expenses</b>	<b>3rd Quarter 2008</b>	<b>3rd Quarter 2007</b>
Death Claims .....	\$ 290,350.00	\$ 183,793.00
Endowments .....	\$ 40,631.00	\$ 31,976.00
Cash Surrenders .....	\$ 50,442.00	\$ 58,390.00
Dividends .....	\$ 41,177.00	\$ 42,044.00
Increase in aggregate reserves .....	\$ 24,000.00	\$ -
Commissions (new and renewals) .....	\$ 28,927.00	\$ 30,013.00
General Operating Expenses .....	\$ 365,359.40	\$ 256,069.86
Officers and Committee Expenses .....	\$ 22,100.74	\$ 41,685.81
Actuarial/Accounting Expense .....	\$ 7,370.00	\$ 63,050.00
Investment Mgt. Fee .....	\$ 5,948.50	\$ 16,699.97
Official Publications .....	\$ 20,651.00	\$ 71,005.40
Travel Expense .....	\$ 5,197.35	\$ 11,672.99
Bureau and Association Dues .....	\$ -	\$ 1,320.00
Donations .....	\$ 14,475.00	\$ 6,257.40
Scholarships .....	\$ 7,759.03	\$ 1,100.00
Fraternal Activities .....	\$ 5,796.98	\$ 11,020.57
Insurance Taxes, Licenses & Fees .....	\$ 23,655.00	\$ 24,313.00
<b>Sub Total .....</b>	<b>\$ 953,840.00</b>	<b>\$ 850,411.00</b>
Net Gain/Loss From Operations .....	\$ (162,540.00)	\$ (67,094.00)
Net Realized Capital Gain (Loss) .....	\$ (220,660.00)	\$ (35,613.00)
<b>Total .....</b>	<b>\$ (383,200.00)</b>	<b>\$ (102,707.00)</b>



# LPSCU Represented at Farewell Reception for Slovak Ambassador

On June 23, 2008, LPSCU Public Relations Director Margaret A. Ferri attended a farewell reception for Slovak Ambassador Rastislav Kacer and his wife, Otilia Kacerova. Ambassador Kacer was preparing to return to Slovakia after



**At left, Otilia Kacerova, wife of Ambassador Rastislav Kacer, expresses her delight with a gift received from Margaret A. Ferri, presented on behalf of the LPSCU.**

completion of his five-year assignment which began September 8, 2003. The reception was held at 6:00 p.m. at the Embassy of the Slovak Republic in Washington, D.C. Among the 200 invited guests was Monsignor Martin Krebs, first counselor of the Apostolic Nunciature in Washington, D.C.

The program opened with the

introduction of Ambassador Kacer, who presented an inspiring speech reflecting on his experience as Slovakia's Ambassador to the United States. He praised the people he had met and said he was proud of his association with the Slovak organizations and Slovak fraternal societies.

Following the Ambassador's speech, representatives from various organizations spoke, praising the Ambassador and expressing good wishes to him and his wife.

As a representative of the Ladies Pennsylvania Slovak Catholic Union, Director Ferri thanked Ambassador Kacer and his wife for the support and camaraderie they have shown to our fraternal officers and members over the past five years. On behalf of the LPSCU, Margaret presented the Ambassador with a gold LPSCU-engraved wine bottle opener.

In accepting the gift, Ambassador Kacer expressed his sincere thanks and related that he appreciated attending all of the Slovak fraternal events he was invited to and will surely miss them.



**Enjoying conversation at the Embassy are, L-R, Margaret A. Ferri, LPSCU public relations director; Vladimir Lopecky, chief administrative officer at the Slovak Embassy; his wife, Judit Kopecka, director of visas; and Judith Mesko of McLean, Virginia.**



**LPSCU members present at the farewell reception for Slovak Ambassador Rastislav Kacer (2nd from right) are, L-R, Jack, Margaret, and John Ferri.**

Margaret also presented the Ambassador's wife with a gold LPSCU Christmas ornament. In expressing her thanks, Mrs. Kacerova teased, "I never receive a gift; he always receives them." She was very pleased that the LPSCU remembered her with a present.

At the conclusion of the remarks, guests proceeded to a dining room where tables were beautifully set with dishes filled with various meats, fish, vegetables, fruit, and all kinds of special Slovak desserts. There was even Slovak cabbage soup.

Accompanying Margaret to the Embassy were her husband John and son Jack, who lives in New Market, Maryland. They were impressed with the friendliness of the guests as well as the Embassy's staff. Jack was delighted with the architecture and beauty of the Embassy of the Slovak Republic and expressed his pride in being a Slovak among our Slovak people and especially the Ambassador from the Slovak Republic.

## In Memoriam

*Blessed are they that mourn, for they shall be comforted.*

— Matthew v.5

Name	Branch	Location
Lorraine Witinski	6	Wilkes-Barre, PA
Edward Dula	37	Plymouth, PA
Marcella Ginder	40	Allentown, PA
* Dolores A. Hujdich	42	Pittsburgh, PA
* Regis Vanischak	42	Pittsburgh, PA
Esther W. Cooper	42	Pittsburgh, PA
Elizabeth Mehlmauer	52	North Braddock, PA
Rita H. Swetz	65	Munhall, PA
* Joan Burt	65	Munhall, PA
Ernest P. Coaton	77	Lorain, OH
Mary T. Elliot	81	Beaverdale, PA
Stephen Halza	90	Johnstown, PA
Anna Berta	124	Hazleton, PA
* Mary A. Kutis	132	Youngstown, OH
Mary Louise Sotak	132	Youngstown, OH
Mary A. Gaza	156	Coaldale, PA
Margaret Gegus	163	Youngstown, OH
Agnes Kay	197	Wilkes-Barre, PA
Gertrude Galish	197	Wilkes-Barre, PA
Rose E. Mizgerd	204	Northampton, PA
* Irene Litwin	213	Dallas, PA

\*Multiple certificates

# LPSCU Branches 83/196 Participate in Make a Difference Day

For weeks before Make A Difference Day on October 25, 2008, LPSCU Branch 83 of Bethlehem, Pennsylvania, and Branch 196 of Hellertown, Pennsylvania, conducted a huge clothing drive among its members, neighbors, and friends to support the Visual Impairment and Blindness Services (VIABL) of Northampton County's "Second Sight" thrift shop. Over 500 articles of men's, women's, and children's clothing were collected, including coats, dresses, blouses, skirts, sweaters, suits, shirts, pants, and shoes.

Branch members picked up the donations from approximately 40 families involved in the drive. The clothing was then delivered by Mary Shannon and Mary Ann Ackerman, president and secretary, respectively, of Branch 83; Margaret and John Ferri of Branch 83; and Jean Kosalko, president and secretary of Branch 196, to Second Sight in the Trolley Station Mall in Bethlehem on Make A Difference Day, October 25.

A "thank you" letter received by Branch officers from Judith Pobuda, executive director of VIABL, stated in part, "In August 2008, we started to run Northampton County's 'Working Wardrobe Program' from our shop. That means we are providing interview outfits and working clothing to women going to work for the first time ever and (hopefully) coming off the Welfare rolls. Your clothing will be very helpful!! Your donation will also help the people we work with because proceeds from the thrift shop directly benefit client services for blind and visually impaired adults and children living in the Lehigh Valley. We cannot thank you enough for your support and your community spirit."

The LPSCU members were truly proud to have chosen VIABL for their Make A Difference Day project. They were especially happy and surprised to learn that Pat, the manager at Second Sight, is also Slovak and that her mother enrolled her into the LPSCU when she was a little girl.

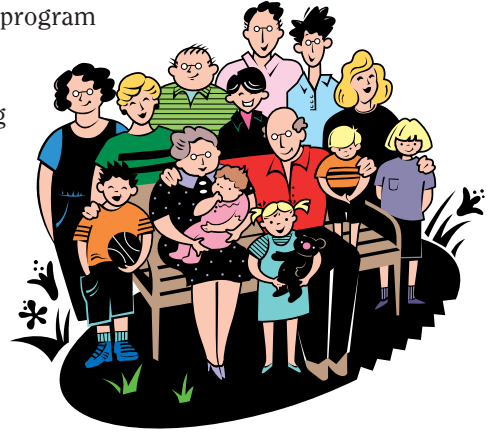


**L-R (foreground), Branch 83 members Margaret A. Ferri, Mary Ann Ackerman, and Mary Shannon drop off donated clothes to "Second Sight" on Make A Difference Day, as thrift shop volunteers Nancy and Pat (L-R in background) wait to begin sorting through them.**

# Mother's & Father's Day Tribute/Memorial Program

Once again this year, the LPSCU is offering a Tribute/Memorial Program to run in the May/June issue of the *Zornicka*. We are pleased to report that this is the eighth year that the LPSCU has sponsored this special tribute. The program

will give our members an opportunity to honor their living parents or remember their deceased ones by placing a Mother's and/or Father's Day message in our May/June issue.



Because space is limited, Tributes/Memorials cannot be more than 2-3 lines and should not exceed 20 words. There is no charge for placing a message, but a good will donation of \$5.00 per greeting will be appreciated. In keeping with the benevolent and fraternal nature of our organization, all proceeds from the Mother's Day Tributes/Memorials will be donated to the Breast Cancer Research Center and all monies donated from the Father's Day Tributes/Memorials will go to the American Diabetes Association for diabetes research.

Donations (which are tax deductible) should be made by check *payable directly to the respective research center* — Breast Cancer Research Center for Mother's Day messages and American Diabetes Association for Father's Day messages.

Tribute/Memorial requests, along with all donation checks, should be mailed to Fraternal Activities Director Cecilia B. Gaughan, 325 Florida Avenue, Whitehall, PA 18052 (phone 610/433-4610).

**Deadline for submitting Mother's/Father's Day messages for the May/June *Zornicka* is March 31, 2009.**

A few examples of Mother's/Father's Day Tributes/Memorials follow:

In honor of our mothers  
Mary Jones and Susan Clark  
Given by George and Christine Clark

In loving memory of Joseph Smith, Sr.  
Given by his children and grandchildren

Happy Mother's Day to Betty J. Winston  
With love from her grandchildren

**The LPSCU reserves the right to edit messages.**

We hope many of our members will participate in this worthwhile fraternal activity, which allows them to honor their mothers and fathers and donate to a very worthy cause. This is a wonderful way to show our love and appreciation to our parents (and grandparents) and to show the concern and compassion the LPSCU has for our fellowman.



# Bethlehem Branch 83 to Celebrate Centennial

The officers of LPSCU Bethlehem Branch 83 are proud to announce that the 100th Anniversary of the origination of Branch 83 is January 17, 2009. In recognition of this milestone, the Branch will observe its Centennial Anniversary on Sunday, April 19, 2009, with a Mass to be celebrated at the Incarnation of Our Lord Church (formerly SS. Cyril and Methodius Church), in Bethlehem, Pennsylvania, at 10:30 a.m., followed by a Luncheon at the elegant Candlelight Inn in Bethlehem. All members of Branch 83 are invited to attend this milestone event. There is no cost for members to attend the anniversary celebration, but reservations are required. Please call President Mary Shannon at 610/866-1625 or Financial Secretary Mary Ann Ackerman at 610/866-3130 **by April 3rd.**

**Margaret Ferri**

# Disaster Relief Efforts

Recently the Gulf Coast states were struck by Hurricanes Hannah and Ike, causing much damage to this area of the country. Many of you already are responding and have contributed to the disaster relief efforts. We thank you and remind everyone that any effort, no matter the size, is important.

At the request of the National Fraternal Congress of America, please be sure to keep us informed of your activities so that we may keep legislators and the general public informed about what the LPSCU and its members are contributing to the relief and reconstruction efforts.

Please contact us, providing the details of your relief effort. Whether you donated money, water, clothing, bedding, or your time — it is all important. You can contact us by phone (toll free at 888/834-6614), by fax (570/823-4464), by e-mail at [lpscu@lpscu.org](mailto:lpscu@lpscu.org), or in writing at LPSCU, P.O. Box 32, Wilkes-Barre, PA 18703-0032.

## Anna Ondrejco Wins WPSCA Scholarship

Anna Marie Ondrejco of Pittsburgh, Pennsylvania, was named the winner of the Western Pennsylvania Slovak Cultural Association's third annual \$2,500 scholarship to attend the Summer Slovak Language and Culture Program at Comenius University in Bratislava, Slovakia. This is the oldest summer language school in Slovakia and is designed to enable students to improve and extend their Slovak language competency, as well as increase their level of expertise in Slovak literature and culture.

Anna Marie is a sophomore at Duquesne University where she is a nursing major. She is a member of the Pittsburgh Slovaks folk dance ensemble and is the daughter of Rudy and Sue Ondrejco of Pittsburgh's Slovak Radio Hour fame. Anna Marie and her mother are members of LPSCU Pittsburgh Branch 64.

The LPSCU congratulates Anna Marie on winning this award. We wish her continued success in her educational endeavors.

# CAMPAIGN 2009

— Issue Dates —

Jan. 1, 2009-Dec. 15, 2009

## PRIZES

1<sup>st</sup> Prize \$200.00 • 2<sup>nd</sup> Prize \$150.00 • 3<sup>rd</sup> Prize \$100.00

*Mid-Year Bonus \$50.00*

*to the individual with the most points*

**Winners will be determined by the following point system**

	\$2000- \$4999	\$5000- \$9999	\$10,000- \$14,999	\$15,000- \$19,999	\$20,000- \$24,999	\$25,000- \$29,999	\$30,000- \$34,999
Single Premium	5	10	15	20	25	30	35
Whole Life	8	16	24	32	40	48	56
20 Pay Life	10	20	30	40	50	60	70
20 Year Endow.	10	20	30	40	50	60	70
3 Pay Plan	7	14	21	28	35	42	49

**Excludes the following policies:**

**Term**

**Face amount less than \$2,000**

**Any other Programs**

**CAMPAIGN COMMITTEE**

Dolores M. Evanko, Chairperson, National Trustee  
Mary Ann Ewasko, National Chairperson of Trustees  
Mary Jo Savidge, National Secretary/Treasurer  
Anita Gregory, National Vice President

Dear Ms. Kluchinski,

I was very surprised and most pleased to find the \$25 check as a Golden Age Recipient for being a member of your fraternal benefit society for 50 years (it has been my pleasure), in the letter you sent me. What a thoughtful thing to do.

I am appreciative of your being so considerate at this time of the year. I wish you all a Blessed, Merry Christmas and a Healthy and Happy New Year!

Again, thank you, thank you.

Sincerely,

**Marion Perks**

Branch L0007, Pittston, PA

Dear Mary Jo,

I want to thank the Union for the gift of twenty-five dollars. It was a pleasant surprise and very nice of the Union.

Thank you again.

Sincerely,

**Ruth Bartivic**

Branch L0027, Philadelphia, PA

Dear LPSCU,

Thank you so much for your generous scholarship. Your continued support over my college career has had such a wonderful impact on my life. As my final semester of college approaches, I will be using my scholarship to purchase my books. It is kind and genuine organizations like the LPSCU who make college experiences available to students.

Once again, thank you and God bless each and every one of you.

**Caryn Glassbrenner**

Branch 64, Pittsburgh, PA

Dear LPSCU,

My wife Jenny and I wish to take this time to thank you for the opportunity to apply for the Catholic High School Award for our daughter Mary Bucha. Mary graduated from St. Michael the Archangel School (Colesville, Pennsylvania) in spring 2008.

Mary graduated with a myriad of awards including: Honor Roll, Conduct and Effort, The Rev. James Hanlon Award which best exemplifies Christian values and principles of honesty, courage, respect and generosity, and also the President of the United States Education Award in recognition of

outstanding academic excellence. She is attending 9th grade in the Fall 2008 at Allentown Central Catholic High School and is enrolled in the Honors College Prep program.

Sincerely,

**Mr. and Mrs. Anthony Bucha**

Branch 40, Allentown, PA

Dear Ms. Savidge and Ms. Kluchinski,

Yesterday's mail brought me a great surprise. I received the check for \$25

from the Ladies Pennsylvania Slovak Catholic Union. My thanks to your organization for this remembrance of my long membership – originally the Lithuanian Catholic Alliance.

I also enjoy receiving your magazine *Zornicka*. Thanks most sincerely for the check.

Sincerely,

**Ursula Gelczis**

Branch L0165, Kearny, NJ

*More letters on page 24*

## Slovakia Admitted to Visa Waiver Program

Effective November 17, 2008, Slovaks traveling to the United States no longer need a visa under certain conditions. Slovaks are allowed to travel to the U.S. without a visa for 90 days or less, for business or pleasure (but not work or study).

To be eligible under the new Visa Waiver Program, visitors must fulfill several requirements. First of all, they must have a biometric Slovak passport. (All Slovak passports issued after January 15, 2008, are biometric.) Secondly, they must fill out an ESTA (Electronic System for Travel Authorization) application on-line.

To do this, go to the ESTA website (<https://esta.cbp.dhs.gov>) and complete the simple, on-line application in English. A traveler must provide name, birth date, passport details, and travel plans. A friend, relative, or travel agent may file an application for someone else. A Slovak-language ESTA form will be introduced as soon as possible. Applications may be submitted at any time before travel; however, Department of Homeland Security recommends that applications be submitted no less than 72 hours in advance. In most cases, travelers will receive a response within seconds. Responses will be one of the following three:

- 1. Authorization Approved:** Travel is authorized, no further paperwork necessary.
- 2. Authorization Pending:** Check the ESTA website for a final response within 72 hours.
- 3. Travel Not Authorized:** Traveler must obtain a visa at the U.S. Embassy before traveling to the U.S.

An approved ESTA is not a visa. Individuals who possess a valid visa will still be able to travel to the U.S. on the visa for the purpose for which it was issued. Individuals traveling on a valid visa will not be required to apply for an ESTA. ESTA is valid for up to two years or until the traveler's passport expires, whichever comes first, and is valid for multiple entries into the U.S. For future trips or changes, applicants can easily update addresses or itineraries through the ESTA website. *An approved ESTA is not a guarantee of admissibility to the U.S. at a port of entry. Border control officers make the final decision at the border.*

The Visa Waiver Program cannot be used by those who plan to study, work, or remain more than 90 days in the United States. Also, it cannot be used by people who have previously been refused a visa, or arrested (even if the arrest did not result in a criminal conviction); those with criminal records; those with certain serious communicable illnesses; those who have been refused admission into, or have been deported from the United States; and those who have previously overstayed on the Visa Waiver Program, even by only one day. Such travelers must apply for visas at the U.S. Embassy.

**Joseph T. Senko**, Slovak Honorary Consul



# Member Interviews Grandfather for School Assignment

Victoriana Kienzle of Malvern, Pennsylvania, had a bright idea to interview her maternal grandfather, John Ferri of Bethlehem, Pennsylvania, for a poster project she was working on in school. She was curious to know what kind of living conditions her grandfather endured when he was growing up in the 1930s.

Tori, as she is called, embarked on her assignment by asking her grandfather many questions. She was amazed when he explained how his family used trolley cars for transportation or they walked for miles. He told her that his parents lost their home during the Depression and they moved into an old house that had no plumbing. There was a potbelly stove in the dining room that provided heat and there were shutters on the windows, not for an attractive appearance, but to keep closed during the winter to keep the cold air from coming through.

Grandpop Ferri related how his mother washed clothes on a scrubbing board and white clothes were boiled in hot water in a large pan on the coal stove to make the clothes immaculate. Tori was astonished to hear Grandpop talk about their "outhouse" and couldn't imagine living in a house without two or three bathrooms. A big plus for Grandpop was his father's large garden, allowing the family to enjoy fresh vegetables daily. For entertainment, Grandpop played games of hide-and-seek, marbles, tinny-tin-can, nipsy (resembling T-ball), red light/green light, and dodge ball.

Using all the information she gleaned from her interview, Tori created a large poster depicting trolley cars, a small house with a potbelly stove, a huge garden with vegetables, and other items showing his life as a young boy. The class found her poster amusing and especially different from today's world. Tori's first assignment as a journalist was interesting for her and she received an A+ from her teacher for her efforts. And MePop, as Tori calls her grandfather, thoroughly enjoyed reminiscing about the days of his youth.

This past June, Tori graduated from 8th grade at Valley Forge Middle School in Wayne, Pennsylvania. At the graduation ceremony, she received the "Challenger Award" for a female student who works the hardest and makes the most effort in any assignment. In September, Tori began her freshman year at Conestoga High School in Wayne, her father's alma mater.

Tori and her siblings, Jenna, Jace, and Tate, are members of LPSCU Branch 130 in Bethlehem. Her parents, Dr. Rand and Patricia Ann Kienzle, are members of Bethlehem Branch 83. Tori's maternal grandmother, Margaret A. Ferri, is Secretary of Branch 130, Treasurer of the Lehigh Valley Okres, and Public Relations Director of the LPSCU.

## Cooking Corner

### PIROHY

2 cups flour  
2 eggs

½ tsp. salt  
½ lb. butter

Mix flour, eggs, and salt. Add enough warm water to make a soft dough. Knead until blisters appear. Divide dough into two parts. Roll out one part on floured board and cut into 2-inch squares. Place a half-teaspoon of filling on each square. Fold square in half to make a triangle. Pinch edges to keep filling from escaping. Follow same procedure for remaining dough. Drop the squares in boiling water until pirohy come to the top (about 5 minutes). Then drain the pirohy. Brown butter in skillet and pour over pirohy. Toss well so that the pirohy are well buttered.

### Cabbage Filling

1 head of cabbage  
1 medium size onion,  
chopped fine

1 tsp. salt  
2 tbsp. Crisco

Cut the cabbage in half. Cut out the core and grate the cabbage. Add salt to cabbage and let stand a few minutes. Saute onion in Crisco. Squeeze juice out of cabbage and drop cabbage into pan with onions. Fry slowly until cabbage is cooked. Cool.

### Potato Filling

1 cup mashed potatoes  
1 egg yolk  
½ oz. grated cheese  
Combine all ingredients  
and let cool before using.

### Cheese Filling

½ lb. dry cottage cheese,  
put through a sieve  
1 egg, beaten  
¼ tsp. salt  
Combine ingredients.



Victoriana Kienzle interviews her grandfather, John Ferri, for a school assignment.

# Meet Your 2008-2012 LPSCU Board

## Rev. Philip A. Altavilla, V.E. *National Spiritual Advisor*

Rev. Philip A. Altavilla is serving his fourth term as National Spiritual Advisor of the LPSCU. Currently, he serves as the Episcopal Vicar for the Northern Pastoral Region of the Diocese of Scranton, Pennsylvania, and lives in residence at Our Lady of the Snows Parish, Clarks Summit, Pennsylvania. For 12 years, he has served as the Director of Ecumenism and Interfaith Affairs for the Diocese of Scranton. He currently serves as Chairperson of the Diocese Committee on Ecumenism and Interfaith Affairs and the Christian Communities Gathering of Northeastern Pennsylvania.

Father Phil is serving his second term as National President of the Slovak Catholic Federation and sits on the Advisory Board of the Jankola Library and Slovak Archives, housed at Villa Sacred Heart in Danville, Pennsylvania.

On March 6, 2006, Father Phil was awarded the Pro Ecclesia et Pontifice medal, granted by His Holiness Pope Benedict XVI, in recognition of his work with the Slovak Catholic Federation and for his pastoral ministry within his own Diocese. The medal was presented by the Most Rev. Joseph V. Adamec, D.D., S.T.L., Bishop of Altoona-Johnstown, Pennsylvania, and Episcopal Moderator of the Slovak Catholic Federation, and with the consent of the Most Rev. Joseph F. Martino, D.D., Hist. E.D., Bishop of Scranton.

Father Phil graduated from Sacred Heart Slovak School in North End, Wilkes-Barre, Pennsylvania. After graduating from the former Bishop Hoban (now Holy Redeemer) High School in Wilkes-Barre, he entered Saint Pius X Seminary in Dalton, Pennsylvania, while pursuing an academic degree in Philosophy and History at the University of Scranton.

Upon graduation from the University of Scranton in 1988, Father Phil was appointed by Bishop James C. Timlin to continue his studies for the priesthood at the North American College, Rome, Italy. He pursued graduate studies in Theology at the Pontifical Gregorian University, receiving a Bachelor's degree in Sacred Theology and a Master's degree in Pastoral Theology. He was ordained a deacon in St. Peter's Basilica in the Vatican on April 30, 1992, by His Eminence, Pio Cardinal Laghi, then Prefect for the Congregation for Catholic Education.

After completing his studies in Rome, Father Phil returned home to be ordained a priest on June 27, 1992, in St. Peter's Cathedral by Bishop Timlin. He celebrated his first Mass on June 28, 1992, at Sacred Heart Slovak Church in Wilkes-Barre.

Following ordination, Father Phil served as assistant pastor and also as pastor of various churches in the Diocese of Scranton, until his appointment as an Episcopal Vicar in July 2007. He has also taught Theology in various elementary and secondary Catholic schools from 1992-1997, and has taught courses for the Diocese of Scranton through the Pastoral Formation Institute which include "Training for Extraordinary Ministers of the Eucharist" and "The Catholic Church Through the Centuries." Father Phil is a frequent presenter to seminarians, permanent deacons and their wives, and conducts retreats for various groups within the Diocese of Scranton.

## Theresa A. Kluchinski *National President*

Theresa A. Kluchinski is currently serving her second term as National President. She previously served as National Secretary-Treasurer for seven years.

During her tenure in office, Theresa has developed new products and new benefits, implemented new offers and awards, managed the Home Office, and played an instrumental role in merger discussions. Through involvement with the National Fraternal Congress of America, New Jersey Fraternal Congress, and Pennsylvania Fraternal Congress, she has represented the LPSCU with pride.

Theresa has served as chairperson of the LPSCU Planning, Marketing, Membership, and Benefit committees, and currently, she is a member of the Campaign Committee. She also served as a member of the NFCA Annual Planning Committee.

She is past president of the Fraternal Societies of Northeast Pennsylvania, past president of the New Jersey Fraternal Congress, and second vice president of the Pennsylvania Fraternal Congress. She is a Board member of the Slovak League of America and of the Slovak Catholic Federation, where she serves as chair of the Constitution Committee. She was co-chairperson of the first Ethnic Festival held at King's College in Wilkes-Barre.

Theresa is a member of the Rev. Dianiska District and is Branch Secretary of Branches 90 and 213 with a combined membership of 714.

She graduated from King's College in Wilkes-Barre in May 1987 with a Bachelor of Science degree in Accounting. She has pursued additional credits in paralegal studies. She has 21 years experience in commercial loan operations with a major national bank.

Theresa and her husband, Leonard, and daughter, Mary Rose, reside in Laurel Run, Pennsylvania.

## Anita Gregory *National Vice President*

Anita Gregory is currently serving her second term as National Vice President. She previously served one term as a member of the Court of Appeals.

During her tenure as Vice President, Anita has sold \$102,000 of life insurance. She has attended Annual Meetings of the National Fraternal Congress of America, New Jersey Fraternal Congress, and Pennsylvania Fraternal Congress. For the past three years, she has attended the seminars and Flag Day celebrations sponsored by the Fraternal Societies of Northeast Pennsylvania.

Anita represented the LPSCU at the first Ethnic Festival at King's College in Wilkes-Barre; at the Slovak Day Celebration in Danville; at the National March for Life in Washington, D.C.; and at the 125th Anniversary Celebration of St. Joseph Church in Hazleton, Pennsylvania.

Currently, Anita is serving her 6th year as President of the Msgr. Beeda Okres, and previously served as District Treasurer for 12 years. She served as Secretary-Treasurer of Branch 34 for 20 years and is currently serving her 6th year as Secretary-Treasurer of Branch 60.

Anita graduated from the academic curriculum at West Hazleton Senior High School. She also graduated from Saint Joseph's School of Laboratory Technology in Hazleton with certification from the American Society of Clinical Pathologists. From July 1971 to the present, she has been employed as a medical laboratory technician at the Greater Hazleton Health Alliance in Hazleton.

Anita is a member of St. John Bosco Church in Conyngham, Pennsylvania, where she has been involved with their RCIA program as well as their soup kitchen. She also keeps herself actively involved with projects at St. Joseph Church in Hazleton, Pennsylvania.

Anita and her husband, John, reside in Sugarloaf, Pennsylvania. They have two sons, Christopher and Jonathan, and two grandchildren, Cameron and Melina.



# Board of Directors/National Officers

## Mary Jo Savidge *National Secretary-Treasurer*

Mary Jo Savidge, National Secretary-Treasurer of the LPSCU, is currently serving her fifth year in office. She is a member of Branch 197 in Wilkes-Barre.

Having worked in a corporate environment prior to her employment with the LPSCU on January 3, 2005, Mary Jo has adapted very well to the fraternal insurance benefit system. Her attendance at Annual Meetings of the National Fraternal Congress of America, New Jersey Fraternal Congress, and Pennsylvania Fraternal Congress, as well as seminars sponsored by the Fraternal Societies of Northeast Pennsylvania, during the past four years has enriched her knowledge of the fraternal insurance system. In 2009, she will serve as President of the Fraternal Societies of Northeast Pennsylvania.

Mary Jo possesses strong technical and professional skills derived from 19 years experience in accounting and finance, customer service, and computer proficiency. From 1985-2004 she worked in a large corporate office where she demonstrated success in achieving both personal and corporate goals. As the new century saw the rise of corporate downsizing in America, Mary Jo felt the impact of that trend at her job site. She is a team leader, an excellent communicator, and is an asset to the LPSCU with her professional employment experience.

Mary Jo graduated from Hanover High School, Hanover Township, Pennsylvania. She has completed computer courses at Luzerne County Community College and Penn State University.

Mary Jo and her daughter, Amy, reside in Sugar Notch, Pennsylvania. They are members of Holy Family Church in Sugar Notch.

## Mary Ann Ewasko *National Chairperson of Trustees*

Mary Ann Ewasko is currently serving her third term as National Chairperson of Trustees. Previously, she served two terms as National Trustee. From January to July 1997, she served as temporary National Secretary-Treasurer, and also held that position from May 2004 to January 2005. She was Senior Bookkeeper at the Home Office from 1961-1963.

Mary Ann is a member of the Executive Finance Committee and also the Campaign, Membership/Benefit, and Planning committees. She has won numerous membership campaign awards, most recently in 2004, 2005, and 2006. From January 2005 to the present, she has sold \$304,000 of life insurance.

Mary Ann served as chair of the Youth Achievement Award for two years. She was co-chair of the 100th Anniversary Celebration and chair of the 100th Anniversary Hospitality Night. She has been a delegate to LPSCU Conventions since 1984.

Mary Ann is active in the Rev. Dianiska District and is currently serving her 10th year as President. Previously, she served as Vice President of the District for two years, as Secretary for two years, and as Public Relations Director.

Mary Ann has attended Annual Meetings of the National Fraternal Congress, Pennsylvania Fraternal Congress, and New Jersey Fraternal Congress. She is Past President of the Fraternal Societies of Northeast Pennsylvania and has attended their annual seminars since 1993. She was active in FSNEPA's first-ever Ethnic Festival held at King's College in Wilkes-Barre. She also volunteers at the annual picnic of the Wyoming Valley Children's Association.

Mary Ann graduated from Wilkes-Barre Township Junior-Senior High School. Her work experience includes the bookkeeping, secretarial, and billing fields.

Mary Ann is a widow and resides in Wilkes-Barre, Pennsylvania. She has a daughter, Diane K. Jason, and two grandchildren, Paul G. and Marissa Jason.

## Dolores M. Evanko *National Trustee*

Dolores M. Evanko is currently serving her fifth term as National Trustee. She served as chairperson of the Centennial and Convention campaigns; is chairperson and a member of the Bylaw Committee; and is a member of the Planning, Membership/Benefit, and Audit committees.

Dolores has attended Annual Meetings of the National Fraternal Congress, New Jersey Fraternal Congress, and Pennsylvania Fraternal Congress. She is Secretary of the Msgr. Beeda District.

Dolores is a member of the Slovak Heritage Society and is currently serving her tenth year as Secretary-Treasurer of the Slovak Catholic Federation.

She is a graduate of Bishop Hafey High School and St. Joseph Memorial School in Hazleton. Dolores received continuing education certificates through her employer, Hazleton General Hospital, from Medis Groups, Atlas University; IBAX Nursing Order Entry, Xpoint; SMS Allegra, SoftMed, Meditech; and Windows, Excel, and other related computer programs. From 1974-1995, Dolores was a medical secretary/transcriptionist at Hazleton-St. Joseph Medical Center. From 1995-2006, she was a supervisor of Quality Outcomes reporting. In 2006 the medical center changed its name to Hazleton General Hospital, where Dolores is presently working as a supervisor. Since 1988, she has also worked part-time in a doctor's office as a medical transcriptionist.

Dolores is a member of St. Joseph Church in Hazleton, where she is a lector, Eucharistic minister, and choir member. She is treasurer of the Parish Confraternity of Christian Women, director of Parish Social Activities, and secretary of the Parish Council.

Dolores resides in Hazleton and is the sister of Rev. Joseph J. Evanko, MA, pastor of John Bosco Church in Conyngham, Pennsylvania.

## Joan T. Hladek *National Trustee*

Joan T. Hladek is currently serving her fourth term as National Trustee and is chairperson of the Educational Committee. She is the LPSCU representative to the Indiana Fraternal Congress, where she currently serves as 1st Vice President. On two occasions, she was the Indiana Fraternal Congress representative to the National Fraternal Congress of America Annual Meeting. She is the LPSCU representative to the Illinois Fraternal Congress and to the Ohio Fraternal Congress (when required). Joan is also the LPSCU representative to the Northwest Indiana Slovak Day Committee and Midwest representative at various Slovak and religious events.

Joan is a 1972 graduate of Indiana University, Bloomington, Indiana, with a B.S. degree in Management. She received an M.S. in Accounting and a Master's of Business Administration in 1999 from the University of Illinois at Chicago. Joan has 38 years of manage-

*(continued on page 14)*

# LPSCU Board of Directors/National Officers (continued)

ment and financial experience including owning and operating a business and business partnership. Her career strengths include finance, accounting, operations, administration, systems development, and documentation.

From September 2003 to the present, she has been director of finance and operations and corporate programs at the University of Illinois at Chicago.

Joan is a widow and currently lives in Sycamore, Illinois. She has one daughter.

## Margaret Jollimore *National Trustee*

Margaret Jollimore is serving her second term as National Trustee. Her first term ran from September 2000 to August 2004, when she served as chairperson of the Fraternalist of the Year Committee. From July to December 2003, Margaret worked at the Home Office to assist with the LCA acquisition.

Margaret has been the Secretary of Branches 58 and 94 since 2001. She has been a member of the Fraternal Societies of Northeast Pennsylvania since 2000, and a Northmoreland Township Auditor since 2004.

Margaret graduated from King's College in Wilkes-Barre with an Associate of Science degree as a Legal Assistant in 1994 and a Bachelor of Science degree in Accounting in 1995. Since June 1998, Margaret's work experience includes staff accountant, payroll supervisor, finance secretary, and payroll/human resource coordinator.

Margaret and her husband Dan reside in Harveys Lake, Pennsylvania. They have two sons, Brian of Seminole, Florida, and Kevin of Harveys Lake, and two grandchildren, Connor and Kendra. Also residing with them is Margaret's mother, Margaret Pesta, former President of Branch 7.

## Elizabeth Ann Melko *National Trustee*

Elizabeth Ann Melko is currently serving her first term as National Trustee, having been elected to the office at the 39th National Convention held in Las Vegas, Nevada. She currently chairs the Youth Achievement Committee.

Elizabeth is Secretary of the Pittsburgh District and has been a member of Branch 42 in Pittsburgh for the past 43 years. She is involved in numerous Branch committees and the planning of various events.

Elizabeth graduated from The Pennsylvania State University in State College with a Bachelor of Science degree in Finance in May 1987. She also graduated from Carlow University in Pittsburgh with a Master's of Science in Organizational Leadership in May 2003.

From May 1987 to May 1996, Elizabeth's work experience includes credit investigator for Sears, Roebuck, & Company in Baltimore, Maryland; senior claims representative for State Farm Insurance Companies in Washington, D.C.; registered representative for First Investors Corporation in Monroeville; and service representative/trainer for HealthAmerica in Pittsburgh. In June 1996, Elizabeth became a group service representative for Highmark in Pittsburgh, and in July 2001, the company promoted her to business analyst. In May 2004, she was promoted to account installation specialist.

Elizabeth has always been actively involved in service organizations and volunteer activities such as CONTACT Pittsburgh Crisis Line, Beginning with Books, Special Olympics, Literacy Council, Hand-in-Hand Festivals, and tutoring students, just to name a few. Her current passion is her volunteer work at the Caring Place for Grieving Children where she is a peer support group facilitator.

Elizabeth credits both of her parents (her mom, Anna Melko, who is also a member of Branch 42, and her father, the late George Melko, Sr.) for motivating her and for being a powerful, driving force

in her life. She resides in Pittsburgh, where, after much traveling around the country for both business and pleasure, she is exceedingly happy to call home.

## Margaret A. Ferri *National Public Relations Director*

Margaret A. Ferri is serving her fourth term as National Public Relations Director. She currently serves as chairperson of the Fraternalist of the Year Committee and is a member of the Youth Achievement Committee. She also served as chair for the 100th Anniversary Celebration Souvenir Book.

Margaret attended an Annual Meeting of the National Fraternal Congress of America and three Annual Meetings of the Pennsylvania Fraternal Congress.

She is currently serving her 15th year as Treasurer of the Lehigh Valley Okres. She is coordinator of the Okres's "Join Hands Day" and "Make A Difference Day" projects, and the annual Mother/Daughter Mass and Luncheon. Margaret serves as Secretary of Branch 130 and is an active member of Branch 83. She has been President of the Cardinal Tomko Chapter of the Slovak Catholic Federation since 1996 and Secretary of the Parish Activities Group of Incarnation of Our Lord Parish (formerly SS. Cyril and Methodius Parish) since 1985.

Margaret is a graduate of Liberty High School in Bethlehem, and a graduate of Bethlehem Business College with an Associate's degree in Accounting and Secretarial Studies. She graduated from Southern Career Institute, Boca Raton, Florida, in 1975 with certification in Paralegal Studies. Her work experience includes three years as a teletypist at Bethlehem Steel Corporation and 42 years as a secretary/paralegal. She retired on August 15, 2007, from the law firm of Sigmon & Sigmon, P.C., where she worked for 32 years.

Margaret and her husband, John, reside in Bethlehem. They have three children, Jack, David, and Patricia, and six grandchildren.

## Cecilia B. Gaughan *National Fraternal Activities Director*

Cecilia B. Gaughan is currently serving her seventh term as National Fraternal Activities Director. She previously served one term as a member of the Court of Appeals. She has served as President and Secretary of Branch 38 since 1995; President of Branch 40 since 1980; and President/Secretary of Branch 170 since 1999. Ceil is a founding member and past Treasurer of the Lehigh Valley Okres; an active member of the Cardinal Tomko Chapter; and a member of the Slovak Catholic Federation.

Ceil's accomplishments include new policy sales in excess of \$700,000 (over 8 years). She has received the Member Anniversary Campaign Award, Total Insurance Sales Award, and numerous Special Campaign awards.

Ceil graduated from Allentown Central High School and pursued courses in Journalism at Lehigh County Community College. She attended a journalism seminar sponsored by *The Morning Call* and pursued computer classes in desktop publishing. She continues to attend courses.

Ceil's varied employment experience includes retail sales, first line production at Western Electric Company, teaching assistant for 12 years, bridal consultant, and purchasing agent.

Ceil is a long-time active member of St. John the Baptist Church in Allentown, where she has been a choir member for 35 years and an active lector and Eucharistic minister. Among many activities and fundraisers for the parish, she recently served on the Centennial Souvenir Book Committee.

Ceil and her husband, Tom, reside in Whitehall, Pennsylvania. They have three children, Thomas, Timothy, and Patrice, and five grandchildren.



# Attention:

## LPSCU Branch & District Members

*We're Looking for a Shining Star  
in the LPSCU for the  
2009 Fraternalist of the Year*



Do you have a member who, through example and accomplishment, provides outstanding volunteer service?



Do you have a member that should be recognized for outstanding fraternal and volunteer efforts?



If you can answer "yes" to the above, then you have a "Shining Star" member to be nominated as our 2009 LPSCU Fraternalist of the Year!

To receive a Nomination Form, contact the Home Office at 570/823-3513 or toll free 888/834-6614; e-mail: [lpscu@lpscu.org](mailto:lpscu@lpscu.org) or visit our website: [www.lpscu.org](http://www.lpscu.org).

Hurry — The Deadline for Nominations is **March 25, 2009**

## LPSCU Welcomes a New Member



**Hannah Noel Yeager**

Hi, I am a new member of LPSCU Branch 130, Bethlehem, Pennsylvania. My Daddy took this picture of me when I was only a month old. I whispered in my Grammy's ear and told her to put my picture in the *Zornicka*, and Grammy said she would.

Hannah Noel Yeager was born on August 21, 2008. Hannah weighed 8 lbs. 3 oz. and was 18½ inches long. She is the daughter of proud parents Jason and Nickiey Yeager of Palmer Township, Easton, Pennsylvania, and the granddaughter of Barbara (Yokai) and Thomas Yeager of Bethlehem. Hannah is the great-granddaughter of Agnes (Check) Yokai and the late Elmer Yokai of Bethlehem.

Jason (along with Uncle Justin Yeager) is a member of LPSCU Branch 130, and Grammy and Great-grandma are members of LPSCU Branch 83.

Hannah, you are our "little angel" and we all love you. May God bless you! ~ Love, Daddy, Mommy, Grammy, Grandpop, Great-grandma, Uncle Larry and Uncle Justin.

*Let an outstanding youth know. . .*

## You Are Appreciated

We all know someone between the ages of 13 and 18 who deserves recognition for his or her scholastic, athletic, fraternal, volunteer, and/or other achievements.



To receive a Nomination Form, contact the Home Office at 570/823-3513 or toll free 888/834-6614; e-mail: [lpscu@lpscu.org](mailto:lpscu@lpscu.org) or visit our website: [www.lpscu.org](http://www.lpscu.org). The deadline for nominations is **March 25, 2009**.

Help the LPSCU show an outstanding young person that "You Are Appreciated" by nominating him or her for the Youth Achievement Award!

**SIGN A NEW MEMBER  
TODAY!**

# Announcing New Insurance Benefits For LPSCU Members



## ***NEW INSURANCE PLANS COMING IN 2009***

- **Long Term Care**
- **Medicare Supplement**
- **Dental**



Being part of the Ladies Pennsylvania Slovak Catholic Union has many benefits, one of them being the unique advantage you have when it comes to shopping for insurance.

Because you are grouped with your fellow members, you may get lower rates than those quoted on an individual basis. Plus, you can trust that LPSCU only offers the best plans for its members.

**To learn more about these exciting new benefits,  
please call our Fraternal Society Insurance Administrator,  
Marsh ConsumerConnexions, at 866-795-6128.**



# Lehigh Valley Okres Celebrates 110th Anniversary of the LPSCU

To commemorate the 110th Anniversary of the LPSCU, the Lehigh Valley Okres hosted an Old-Fashioned Picnic at The Meadows in Hellertown, Pennsylvania, on Sunday, August 3, 2008. The event was held from 1:00-5:00 p.m. with 101 LPSCU members in attendance.

The celebration commenced with a welcome and a prayer by Okres President Jean Kosalko. Okres Treasurer Margaret A. Ferri introduced our honored guests: National President Theresa Kluchinski, National Secretary-Treasurer Mary Jo



**Lehigh Valley Okres children at LPSCU 110th Anniversary Celebration.**

Savidge, National Trustee Dolores Evanko, Rev. Joseph Evanko of Conyngham, Pennsylvania, Rev. Mr. Cyril Kowalchick of Hazleton, Pennsylvania, and Benjamin G. Klophaus. President Kluchinski was pleased to present a plaque and a \$2,000 Single Premium Certificate to Benjamin G. Klophaus, recipient of the LPSCU's 2008 Youth Achievement Award. She proudly summarized all of Benjamin's outstanding accomplishments and achievements which qualified him for the award. She also acknowledged that the National Fraternal Congress of America named Benjamin as a Fraternal MVP (Most Valuable Participant) for the week of June 23, 2008. Everyone was surprised to hear that our own Bethlehem Branch 83 member, Tanya Bolcar Korpics, was Ben's first grade teacher.

President Kosalko presented Benjamin with a monetary gift on behalf of the Okres.



**LPSCU members from the Lehigh Valley area and Board members at the Lehigh Valley Okres picnic celebration.**



**Preparing to serve the 110th Anniversary cake are Okres and National officers, L-R: Dolores Evanko, Mary Ann Ackerman, Jean Kosalko, Theresa Kluchinski, Mary Shannon, Margaret A. Ferri, and Mary Jo Savidge.**

After feasting on an array of picnic fare, the children in attendance played games and the adults played bingo. There were plenty of prizes for all participants. Winner of the "Guess the Number of Tootsie Rolls in the Jar" was Agnes Yokai of Bethlehem Branch 83.

Special gifts were presented to the National Officers, including Fraternal Activities Director Cecilia Gaughan, Public Relations Director Margaret A. Ferri, and Honorary Vice President Mary Ann Ackerman.

Following the games, Margaret Ferri announced the significance of the celebration in honor of the 110th Anniversary of the LPSCU. Everyone sang "Happy Anniversary" to the LPSCU and Okres Secretary Mary Shannon cut the huge anniversary sheet cake and served cake and ice cream to all.

As the celebration came to a close, the children received an engraved piggy bank filled with \$1.10 in coins and the adults received a beautiful engraved LPSCU Christmas ornament. Both were gifts from the LPSCU.



**LPSCU President Theresa Kluchinski presents Benjamin Klophaus of Whitehall Branch 38 with the 2008 Youth Achievement Award plaque and an insurance policy as Okres President Jean Kosalko waits to present Ben with a monetary gift on behalf of the Okres.**

The Okres is grateful to President Kluchinski and Secretary-Treasurer Savidge for delivering the piggy banks and ornaments and for participating in our celebration. The picnic was truly a fun-filled, fraternal event marking the 110th Anniversary of our beloved LPSCU.

## SCF Seeks Contributors for 'Good Shepherd' Annual

*Dobry Pastier (The Good Shepherd)*, edited by Sister Bernadette Marie Ondus, SS.C.M., and published annually by the Slovak Catholic Federation, compiles articles focusing on topics which are of interest to Slovak-American Catholics. The Federation is currently accepting articles for inclusion in the 2009 edition. Potential contributors should note that while the scope of the publication is broad, articles solely political in nature will not be accepted.

The deadline for all articles is **May 1, 2009. Due to the printing schedule, articles received after the deadline will not be included in the annual.** The annual will be available for distribution in the Fall.

In order to facilitate the editing and printing of *The Good Shepherd*, the following guidelines are established for authors who would like their work to be considered for inclusion in the annual:

### GENERAL INFORMATION

- All articles must be type-written, double-spaced in Microsoft WORD format in 12 point, Times New Roman font.

- It is strongly preferred that **English** articles be e-mailed to Sister Bernadette Marie Ondus, SS.C.M., Editor, at: [bernsscm@yahoo.com](mailto:bernsscm@yahoo.com). In this age of modern technology, it is faster and more cost effective to work from a text that is provided digitally instead of having to retype the entire article.

- If it is not possible for an article to be e-mailed, a "hard copy" may be mailed to Sister Bernadette Marie Ondus, SS.C.M., Villa Sacred Heart, Danville, PA 17821-1698.

- To be accepted for publication, articles must be between three and ten typewritten pages. Articles fewer than three pages or beyond ten pages will not be accepted.

### USE OF PHOTOS

- If at all possible, kindly send photos to accompany articles. Photos must be included at the same time the article is sent to the Editor. If sending photos digitally, save as separate JPEGs to accompany the article. Please indicate where photos are to be placed within the body of the article. Be sure to properly identify the persons, places and/or situations depicted in the photo(s). **If no indication is given as to where, within the article, the photos are to be inserted, photos will not be included in the article.**

- In the event that an article is e-mailed and photos are not included as attachments, the actual photographs, along with a hard copy of the article, must be mailed to Sister Bernadette Marie Ondus, SS.C.M. for inclusion into the article. (If more convenient, photos can also be saved to a CD which the printer can then link up with the article.) But again, please be sure that the photos are properly identified and note where, within the article, the photos are to be inserted. Photos must always accompany the article for which they are intended.

- Captions must be included with the photos. This allows readers to better understand the relationship of the photo to the content of the article.

### ARTICLES IN SLOVAK

- It is preferred that articles be written in English. Articles submitted in Slovak will be sent to a third party for editing. **Please note:** Articles submitted in Slovak are typed by a person who does not read Slovak; therefore, it is imperative that the author include all appropriate accent marks, diacritical letters, and other special characters. Correct punctuation is essential. Use commas and periods where necessary, not dashes. **ALL SLOVAK ARTICLES NEED TO BE CHECKED FOR CORRECTNESS BEFORE THEY REACH THE TYPESETTER.**

- Slovak articles can be e-mailed to Sister Bernadette Marie, but a hard copy must also be mailed to her. (It needs to be noted when mailed that the article was also e-mailed.) Oftentimes, accent marks, diacritical characters and other special characters do not come through properly when articles are e-mailed. Having a hard copy of the article, appropriately marked, will save valuable time and resources and help assure that your article is printed correctly.

As Editor, Sister Bernadette Marie retains the right to correct grammatical errors, delete repetitions, rearrange ideas to make them clearer, etc. Sister Bernadette Marie also retains the right to determine the appropriateness of articles for the publication. However, she will not substantially change the author's ideas without first consulting the author.

Our sincere thanks to all the faithful contributors to *The Good Shepherd!* Your contributions, year after year, ensure that the Slovak Catholic Federation is able to provide a quality annual which helps celebrate our Catholic faith, preserves our Slovak heritage, and allows our readers to stay in touch with what's happening in the Catholic Church, in Slovakia, and in the Slovak-American community.

We are looking forward to your contributions again this year.

**Rev. Philip A. Altavilla, V.E.**, National President, SCF

## SCF Announces 31st Annual SS.C.M. Appeal

When our ancestors came to these shores more than a century ago, they brought with them few monetary assets. Their most precious possession was their faith. The seeds of this faith were nurtured by the Slovak priests who came with the immigrant people and helped build our Slovak Catholic fraternals, religious communities of men and women, and nearly 300 Slovak parishes. In response to this legacy, the Slovak Catholic Federation will sponsor the **31st Annual SS. Cyril & Methodius Appeal.**

The Church in Slovakia has enjoyed a great renaissance since the fall of Communism in 1989. We in America and Canada take pride in the fact that the Slovak Catholic fraternals, our parishes, and individuals of Slovak ancestry have responded generously to assist the Church in our ancestral homeland. The 2009 Annual Appeal begins during the month of February in churches of Slovak descent across the United States and Canada and will continue to the end of the year.

The 2008 Appeal collected \$60,000. Since its inception, this Appeal has raised \$2,130,658.40.

Funds raised from the Appeal will aid the priest-graduate students at the Pontifical Slovak College of SS. Cyril and Methodius. These fine priests are being called upon to be the future leaders of the diocesan churches in Slovakia both as vicars and bishops, in addition to providing qualified instructors/professors for the seminaries that educate future priests. As well, funds benefit those religious communities of both men and women which share a counterpart which belongs to the Slovak Catholic Federation and the Slovak Conference of Religious. These communities include: Vincentian Sisters of Charity (Ruzomberok), Dominican Sisters (Dunajska Luzna), School Sisters of St. Francis (Zilina), Daughters of St. Francis (Bratislava-Prievoz), Byzantine Catholic Sisters of St. Basil the Great (Secovce and Presov), Franciscan Friars Minor (Bratislava), and House of St. Benedict (Bacurov).

The Slovak Catholic Federation was founded in 1911 under the spiritual leadership of Rev. Joseph Murgas, founding pastor of Sacred Heart of Jesus Slovak Church, Wilkes-Barre, Pennsylvania. The purpose of the Slovak Catholic Federation is to federate individuals of Slovak origin under one banner for cultural, religious, and educational needs. Serving as National President is Rev. Philip Altavilla, V.E., Episcopal Vicar for the Northern Pastoral Region of the Diocese of Scranton. The Episcopal Moderator is the Most Rev. Joseph V. Adamec, D.D., Bishop of Altoona/Johnstown, Pennsylvania. The National First Vice President, Rev. Andrew S. Hvozdic, pastor of the Church of the Epiphany, Sayre, Pennsylvania, and the Church of Saint Ann, Bentley Creek, Pennsylvania, is the coordinator for this Annual Appeal.

In our Church today, we are finding more and more individuals of Slovak descent/background do not attend traditionally founded Slovak parishes, for a number of reasons. Because of this reality today, the monies raised for this Appeal come both from the collections taken in our Slovak parishes as well as from individual donors.

Your tax-deductible donation, made out to the **Slovak Catholic Federation** (and please indicate that it's for the *Annual Appeal*), can be sent directly to the National Secretary/Treasurer of the Slovak Catholic Federation: Dolores Evanko, 173 Berner Avenue, Hazleton, PA 18201.

***As always, thank you for your generosity!***



# Illinois Fraternal Congress Offers 2009 Scholarships

LPSCU members who are residents of the state of Illinois can apply for a scholarship being offered by the Illinois Fraternal Congress. Three non-renewable \$500 scholarships will be awarded, at the discretion of the IFC Board. Please read the following information to see if you qualify for an IFC Scholarship.

## Applicant Information – 2008-2009

- Applicant must be currently attending or planning to enroll as a full-time student in an accredited college, trade, or technical school. (Or, an applicant may also be returning to school.)
- The applicant, the applicant's parent, or legal guardian must be a member in good standing of an Illinois fraternal benefit society for a minimum of two years. (The LPSCU is a member of the IFC.)
- The applicant, the applicant's parent, or legal guardian must belong to a society whose membership dues are current with the Illinois Fraternal Congress.
- An applicant who has lived apart from his/her family for a period of one year may be considered a separate family and establish eligibility through his/her own membership in an Illinois lodge.
- Recipients are not eligible for a second scholarship from the IFC.
- A current grade transcript must accompany the scholarship application.

- All questions on the application must be answered. Incomplete applications will be disqualified.
- **The society coordinator must return the application to the IFC Scholarship Chairman by February 1, 2009.**

All applications will go through a judging process and the winners will be announced at the IFC Annual Meeting to be held in March 2009. The decisions of the judges will be final.

Payment of the scholarship will be made directly to the recipient upon notice from the institution where the winning recipient has been accepted/is enrolled.

To apply, go to [www.ifc-fic.org/scholarships](http://www.ifc-fic.org/scholarships) to print out a copy of the official Scholarship Application form. Complete as instructed and submit this form and your school transcripts to LPSCU President Theresa Kluchinski, who must sign the Scholarship Application and return it to the IFC Scholarship Chairman. **Please be sure to send your application to President Kluchinski in ample time for her to return it to the IFC by the February 1st deadline.**

**Tom Adamson**, IFC Scholarship Chairman  
National Catholic Society of Foresters

## Rev. Dianiska District Receives Unique Thank You

At the District's September meeting, President Mary Ann Ewasko presented the members with a lovely thank you note she received from residents of The Laurels Skilled Nursing and Rehabilitation Center after our participation there for "Join Hands Day." District members and students from The Montessori School in Kingston, Pennsylvania, and the Wilkes-Barre Academy played bingo and served refreshments to the residents. The members were flattered by their thoughtfulness but we want them to know that the pleasure was all ours!

The hands of thank you:



**Orange** – Thank you for the day of fun!

**Yellow** – Thank you for the cake!

**Blue** – Thank you for the prizes!

**Green** – Thank you for the snacks!

**Pink** – But most of all ~ Thank you for coming to visit.

Please come again!

*Your Friends at The Laurels!*

## Rev. Dianiska District “Makes A Difference”

At the September 2008 meeting of the Reverend Dianiska District, members participated in the upcoming “Make A Difference Day,” which is held nationally in October. Make A Difference Day is an annual event where participants are asked to give a little of themselves to make a difference in the lives of others. As its contribution to the cause, the District collected pairs of new socks from members. The socks were then donated to local charities on Make A Difference Day.

**Susan Worth**



**L-R: Theresa Kluchinski, District President Mary Ann Ewasko, District Vice President Hope Napkora, Regina Kapral, and Cathy Faatz, assistant director of Community Planning and Impact, United Way of the Wyoming Valley, to whom the socks were given for distribution to local charities.**

# LPSCU 2009 Educational Benefits



## College Scholarship — \$500 One-Time Award

- Member of LPSCU for two (2) years with \$2,000 legal reserve life insurance plan.
- Must be high school senior, college freshman, sophomore, or junior to apply.
- High school senior must provide a letter of recommendation from a school representative (ex: teacher, guidance counselor, or principal).
- Submit official transcript from high school that includes test scores; college students must submit documentation indicating latest overall GPA.
- Provide detailed list of extracurricular activities, honors and awards.
- Provide detailed list of church, community, volunteer, and work activities including honors and awards, with reference(s) included.
- Attend an accredited college/university on a full time basis for the 2009-2010 academic year.
- Submit proof of acceptance/attendance for fall semester.
- Submit a brief essay (no more than 200 words) on the topic "Why is life insurance important?"
- Provide a wallet-size color photo.
- Application must be postmarked by **February 28, 2009**.

## Anne (Shinal) Cichy Memorial Award — \$500 (Maximum of \$1,000 per member)

- Must have a life certificate with LPSCU.
- Attend an accredited college/university in the fall of this year on a full time basis in the healthcare field.
- Provide proof of acceptance/attendance.
- Provide a wallet-size photo.
- Application must be postmarked by **March 25th**.

## Catholic High School Award — \$150 One-Time Award

- Member of LPSCU for two (2) years with \$2,000 legal reserve life insurance plan.
- Must be Catholic high school freshman, sophomore, junior, or senior.
- Provide a wallet-size color photo.
- Application must be postmarked by **June 30, 2009**.

## Bishop Grutka Award — \$1,000 (Maximum of \$2,000 per member)

- Member of LPSCU for two (2) years with \$5,000 legal reserve life insurance plan.
- Must be a lay person between 18-35 years of age.
- Must be of the Catholic religion (Latin Rite or Byzantine).
- Must be initiated fully into the Church (Baptized, Eucharist, and Confirmed) and continuing to be eligible to receive the sacraments of the Church.
- Must be a member of a Catholic parish.
- Must be active in parish/diocesan/campus ministry as Lector, Extraordinary Minister of Holy Communion, Adult Altar Server, Catechist/Aide, member of parish RCIA/C Team, Youth Minister, Parish Pastoral Council, Finance Council and/or other parish committees of organization.
- Active in organization or activity that promotes awareness of our Slovak heritage, culture, and traditions.
- Endorsed by your pastor and LPSCU branch secretary with additional endorsement provided by campus minister, youth minister, or pastoral associate.
- Attend or will attend an accredited college/university as a full time student.
- Provide a notice of acceptance or tuition receipt for the coming scholastic year.
- Provide a wallet-size color photo.
- Application must be postmarked by **June 30, 2009**.

## St. Theresa of the Little Flower, Blessed André, St. John Vianney — \$300 Annually

- Member of LPSCU for two (2) years with \$2,000 legal reserve life insurance plan.
- Must re-apply each year while attending/completing studies for Religious Life.
- Provide a wallet-size color photo.
- Application must be postmarked by **August 31, 2009**.

## Post-Graduate Award — \$300 One-Time Award

- Member of LPSCU for five (5) years with \$2,000 legal reserve life insurance plan.
- Degree must be awarded between July 1, 2008 and August 30, 2009.
- Provide photocopy of diploma received.
- Provide a wallet-size color photo.
- Application must be postmarked by **August 31, 2009**.

Applicants must meet all criteria and provide data indicated to be eligible. Incomplete applications or those missing data requirements will not be considered. All materials become the property of the LPSCU and will not be returned. Applications can be obtained by contacting the Home Office:

Phone — 570-823-3513 • Toll free — 888-834-6614  
Fax — 570-823-4464 • E-mail — [lpscu@lpscu.org](mailto:lpscu@lpscu.org)  
Website — [www.lpscu.org](http://www.lpscu.org)

Ladies Pennsylvania Slovak Catholic Union  
Educational Benefit Committee  
P.O. Box 32, Wilkes-Barre, PA 18703



## Illinois Fraternal Congress Sponsors Youth and Adult FOTY Program

The Youth and Adult Fraternalist of the Year awards are honors bestowed by the Illinois Fraternal Congress to recognize a young individual and adult within the fraternal benefit system who, through example and accomplishment, provided outstanding volunteer service to his/her lodge, society, and community during the past year.

### **Eligibility Requirements**

- Anyone between the ages of 12-22 may be nominated for the Youth award. Those 23 and older may be nominated for the Adult award. All nominees must be members of an Illinois fraternal benefit society for at least two years. Since the LPSCU is a member of the Illinois Fraternal Congress, LPSCU members residing in Illinois are eligible to participate in this program.
- Nominees will be judged on activities completed within the last 12 months.
- The adult and youth awards can be won only once by an individual. However, a society is eligible to nominate an individual not selected in a previous year.
- The program will be administered by the IFC Adult and Youth Fraternalist of the Year Committee.
- A qualified panel of independent judges will choose the winners. The decisions of the judges will be final.
- One original portrait (head and shoulders) photo of the Youth/Adult nominee must be submitted with the nomination form.

### **Award Description**

- An engraved plaque will be presented to the Adult and Youth honorees at the Annual Meeting of the IFC in March 2009. Travel, lodging, and meal expenses for the honorees will be paid by the sponsoring societies.
- A \$100 check will be awarded on behalf of each honoree to the nonprofit, charitable organization of their choice.
- Media information regarding the honorees will be distributed by the IFC Adult and Youth Fraternalist of the Year Committee.

Nomination Forms are available at <http://www.ifc.fic.org/fraternalist> or by contacting LPSCU President Theresa Kluchinski at 570/823-3513; toll free at 888/834-6614; fax 570/823-4464; or e-mail [lpscu@lpscu.org](mailto:lpscu@lpscu.org).

All completed nomination forms **must be returned to the LPSCU Home Office** for President Kluchinski's signature. Forms will then be forwarded to the IFC Committee for consideration. **Be sure to mail your form and photo to the Home Office early enough to allow ample time for it to be forwarded to the IFC by the February 1, 2009 deadline.** (Faxed forms will not be accepted.)

*Have you signed up a new member lately?*

## Slovak Catholic Federation Plans National Convention

The Slovak Catholic Federation is proud to announce its 57th National Convention will be held in the Lehigh Valley, Pennsylvania, from Sunday, April 26, 2009, through Tuesday, April 28, 2009. The Convention is being hosted by the Cardinal Tomko Chapter of the Federation.

The Convention Liturgy will be celebrated on Sunday, April 26 at 3:00 p.m. at St. John the Baptist Slovak Catholic Church, 924 North Front Street, Allentown, Pennsylvania, where Msgr. Robert F. Kozel is pastor. God willing, the celebrant and the homilist for the Convention Liturgy will be His Eminence, Jozef Cardinal Tomko, Prefect Emeritus, Congregation for the Evangelization of Peoples.

Following the Liturgy, a banquet will be held in the Grand Ballroom of the Best Western Lehigh Valley Hotel and Conference Center, located on Route 512 and 22, 300 Gateway Drive, Bethlehem, Pennsylvania.

Convention sessions will be held on Monday, April 27 and Tuesday, April 28 at the hotel. Upon adjournment of Tuesday's meeting at approximately 12:30 p.m., the Chapter will host a complimentary buffet luncheon at the Saint Francis Center for Renewal, 395 Bridle Path Road in Bethlehem. The School Sisters of St. Francis in Bethlehem maintain the Renewal Center. Sister Marguerite Stewart, OSF, serves as the Center's Director.

Guest rooms for the Convention are reserved at the Best Western Lehigh Valley for Sunday, April 26, through Tuesday, April 28. Guest rooms for Saturday, April 25 are available, if necessary. The group room rate for this event is \$79.00 per room per night, plus tax. To make hotel reservations, please call: 888/222-8512 or 610/866-5800.

For more information on Convention details, please call Margaret Ferri (610/866-8945), Chapter President and Convention Chairperson.

## *Calendar of Events*

*continued from page 2*

**25 — Deadline to submit articles for July/August Zornicka.**

### **JUNE**

**6** — LPSCU Teleconference Meeting

**30** — Deadline to apply for the LPSCU Catholic High School Award and Bishop Grutka Award.

### **JULY**

**25 — Deadline to submit articles for September/October Zornicka.**

### **AUGUST**

**31** — Deadline to apply for LPSCU Religious Awards and Post-Graduate Award.

### **SEPTEMBER**

**9-11** — LPSCU Semiannual Meeting in the Lehigh Valley, Pennsylvania

**17-19** — NFCA Annual Meeting, San Antonio, Texas

**28-29** — Slovak Catholic Federation Meeting in the Lehigh Valley, Pennsylvania

LPSCU,

I wish to extend my sincere appreciation to the Ladies Pennsylvania Slovak Catholic Union for awarding me the College Scholarship Award. I am very grateful that the organization extends this benefit to college students as it helps considerably with tuition and expenses such as books and supplies.

Thank you,

**Jonathan D. Royer**

Branch 37, Plymouth, PA

Ms. Mary Jo Savidge and the LPSCU,

Thank you for choosing me as one of your recipients of the 2008 Scholarship award. It means so much to me that you acknowledge and appreciate my hard work and dedication towards my education. Any money that can assist in paying for my tuition is extremely helpful.

Sincerely,

**Christina Nypaver**

Branch 90, Johnstown, PA

Dear LPSCU Board,

Thank you so much for the generous award. It will be used to offset my student loans. I look forward to seeing you all soon. Maybe I will see you in Vegas. If LPSCU is ever in Washington, D.C., please let me know.

Thank you.

**Sheri Cosme**

Branch 6, Wilkes-Barre, PA

Dear Mary Jo,

I would like to express my sincere appreciation to you and the Ladies Pennsylvania Slovak Catholic Union for the generous scholarship gift.

I will be completing my undergraduate studies from Duke University with a Chemistry degree in May '08.

Sincerely,

**Laura Anzaldi**

Branch 64, Pittsburgh, PA

Dear LPSCU,

I want to express my sincere thanks to the LPSCU for awarding me the Anne (Shinal) Cichy Memorial Scholarship. Thanks also to Mr. and Mrs. Francis A. Shinal for their generosity in making this award possible. As I begin my second year of medical school, this award will certainly help towards the cost of books and supplies. I appreciate your support in my study of medicine and I am proud to be a member of the LPSCU.

Sincerely,

**Jesse Schafer**

Branch 172, Pittsburgh, PA

Dear Ms. Kluchinski,

My parents just informed me that I am the recipient of the 2008 Bishop Grutka Award. I'm at Penn State University now and they called to tell me about the good news.

I am extremely honored and humbled to have achieved this award. My faith is a gift truly connected to the spiritual seeds of my heritage. I would like to thank you and the LPSCU organization for this generous award which will be a big help in paying the tuition at PSU.

Thanks again.

Sincerely,

**Ben Klophaus**

Branch 38, Whitehall, PA

## JET Plan \$1.00 First Year Premium Extended

The LPSCU Board of Directors announces that the \$1.00 first year annual premium on the Juvenile Estate Term (Term-to-25) plan of insurance has been extended for the year 2009. **This offer is limited to certificates with an issue date in the year 2009.** After the first year, premiums will be billed at the rate of \$16.00 for \$10,000 of term life insurance and \$9.50 for \$5,000 of term life insurance.

The LPSCU's Juvenile Estate Term (JET) Plan, commonly referred to as Term-to-25, is an ideal insurance solution for students and is available to anyone less than 22 years of age. The plan provides full life insurance protection from date of issue to age 25.

A medical exam is not required to apply; however, the LPSCU reserves the right to require a medical exam on any applicant should it be deemed necessary.

Once the JET insurance certificate is issued, coverage remains in full force and effect through the maturity date of the certificate, provided premium payments are current.

In the event of the death of the insured prior to reaching 25 years of age, the face amount of the certificate is paid to the named beneficiary.

This plan matures when the insured's certificate reaches the anniversary of issue date closest to his/her 25th birthday. **When the certificate expires, the insured will be given an option to convert his/her current coverage amount to a legal reserve plan (permanent insurance) with no evidence of insurability being required. This is a guaranteed provision within the JET contract.**

The new legal reserve certificate may provide a death benefit equal to or less than the face amount of the expired JET certificate. The certificate date of issue will be the expiry date of the JET certificate. The premium on the new certificate will be based on the member's age on the date of exchange and on the Society's premium rates then in effect. The first premium on the new certificate must be paid prior to the expiry date of the JET certificate. Written request for exchange will be required.

JET Term-to-25 is an excellent, affordable plan providing protection for your children from infancy on through their school years, including college. Now the JET Term-to-25 is even more affordable with the first year's premium costing just \$1.00. This offer is good for certificates with an issue date in the year 2009.

Call your Branch Secretary today for an application for this economical term insurance plan for the young, or contact the LPSCU Home Office at 888/834-6614 or 570-823-3513. You can also e-mail the Home Office at [lpescu@lpescu.org](mailto:lpescu@lpescu.org) or visit our web site at [www.lpescu.org](http://www.lpescu.org).



Dear Theresa,

Thank you for your special letter with the monetary gift of twenty-five dollars. I am grateful for the Golden Age Award, for I am 95 years of age and was part of this insurance since I was a small child. Dad always had us insured when we were young.

You are doing wonderful work with the LPSCU. Each time I read the magazine, I'm happy about all the wonderful work you are doing.

You and your loved ones will be remembered in a Mass at Christmas celebrated in the Motherhouse Chapel of the Sisters of St. Casimir. May God's blessings be with you all through the New Year.

So, once again — What you did was really thoughtful. Thank you so much and God bless you and all your workers. Gratefully yours,

**Sister Cecilia Papis**  
Branch L0033, Chicago, IL

Dear LPSCU,

May the magic of Christmas fill your world with joy through the holiday season and all year long.

The \$25.00 check came in handy. *Acieue Labai.*

**Florence Sodomka**  
Branch L0082, St. Louis, MO

Dear LPSCU,

I am very sorry for not thanking you sooner, but I have been keeping busy with my schoolwork. I would like to thank you for granting me a scholarship award. It was put towards my tuition at Duquesne University. I apologize again for not thanking you sooner. Merry Christmas and Happy New Year!

**Anna M. Ondrejco**  
Branch 64, Pittsburgh, PA

Dear Ms. Savidge,

I am writing this letter to thank you and the Educational Benefit Committee personally for awarding me my scholarship that I have been receiving for the past 4 years. This scholarship has helped tremendously with helping me to purchase books and things of the like during my 4 years at school.

I will be graduating with a Bachelor's degree in Mechanical Engineering from Widener University. I have accepted a job offer with a chemical company called Air Products.

I would like to thank you again for your generosity and help with giving me this scholarship over the past 4 years. I hope you had a very Merry Christmas and I send my best wishes for a Happy New Year!

Sincerely yours,  
**Jason Charles Maskinas**  
Branch 19, Swoyersville, PA

Dear Mary Jo,

Thank you for the beautiful wedding cross that you sent us. The cross is truly special and will be treasured by myself and my husband.

Love and prayers,  
**Eleanor Davis Fox**  
Branch 24, Windber, PA

## UTILIZATION REPORT

	For October 2008	Year-to-Date 2008
Prescriptions Filled:	17	218
Normal Retail Pricing:	\$ 891.80	\$8,282.16
ScriptSave Pricing:	\$ 714.46	\$ 6,474.38
Total Dollars Saved		
by LPSCU Cardholders:	\$ 177.34	\$1,807.78
Average Saved per		
Discounted Prescription:	\$ 17.73	\$ 11.09
Overall LPSCU Discounted		
Prescription Savings:	22.53%	24.86%

The ScriptSave® Prescription Drug Savings Program is available to you at **NO COST** from the Ladies Pennsylvania Slovak Catholic Union. There are **no monthly or ongoing fees, no limits on usage and no income or age restrictions**. Your entire household can use the card to receive substantial savings on brand name and generic prescriptions at over 53,000 participating pharmacies nationwide.

### Everyone Can Save!

Use your ScriptSave® card for any brand name or generic prescription you or a family member pays for out-of-pocket. If you have health insurance coverage, use your ScriptSave® card for any prescriptions that are not covered by your insurance or for savings for your family members not covered by insurance. The ScriptSave® card also provides savings on prescriptions that are excluded by Medicare Part D law, if you have Medicare and are enrolled in a Medicare Part D prescription drug plan.

The ScriptSave® card provides you:

- Average savings of 22%, with potential savings of up to 50% (based on national program savings data) on both brand name and generic prescriptions for you and your entire household.
- Easy access to everything you need — right online! Look up drug prices, find a pharmacy nearby and get answers to your questions.

Any LPSCU member (including the membership of LCA) can receive a ScriptSave® card at no cost. If you are interested in receiving a ScriptSave® card, please contact our Home Office at [lpscu@lpscu.org](mailto:lpscu@lpscu.org). You are eligible for the card as long as you are a member of the LPSCU (or LCA) in good standing.

**DISCOUNT ONLY — NOT INSURANCE. This program is not an insurance policy and does not provide insurance coverage. Discounts are available exclusively through participating pharmacies. You may cancel your registration under this program within thirty (30) days from the date your discount card is issued.**



Dear Ms. Savidge:

Thank you for your generous gift toward my high school education. This gift will be a welcome aid for my parents in meeting my tuition cost. It is greatly appreciated.

Again, thank you for the gift from the LPSCU.

Sincerely,  
**Martin Kurtz**  
Branch 38, Whitehall, PA

## Dear Junior Members,

February is when Americans celebrate Black History Month. This has been recognized in some form annually since 1926 when a Harvard graduate born to former slaves became irritated that he did not find in his studies in history books the mention of black Americans. As a result, he launched Negro History Week.

I came across an article about the first recognized U.S. priest who was African American. He had been denied entrance by U.S. seminaries but after pleas from many sympathetic families, Augustine Tolton was allowed to study in Rome.

Tolton's story is one of struggle, sadness, and perseverance. He was one of three children born in 1854 to Catholic parents, who were slaves in Missouri. His father, Peter Tolton, was one of many Negroes who joined the Union Army to fight for black freedom in the Civil War. Peter Tolton died battling for that cause.

After his father's death, Augustine, along with his mother, Martha Jane, and his two siblings, escaped and made a harrowing journey across the Mississippi River to Illinois. After they settled in Quincy, Illinois, Martha Jane, Augustine, then 7, and his brother Charley, 9, went to work in a tobacco factory. Augustine was later to work in a saddlery, as custodian of St. Peter's Church, and as a factory hand.

Growing up, Augustine circulated among many priests and nuns who taught him to read and write. Initially enrolled in the segregated Lincoln Public School, he moved to St. Boniface Parochial School after three months. When prejudice forced him out of St. Boniface after a short time, Augustine and his siblings were welcomed by Fr. Peter McGirr into his school at St. Lawrence (later St. Peter's) Church. There, Augustine graduated with distinction and was confirmed. He was also tutored privately by priests who sensed his leanings toward the priesthood.

While Augustine's old nemesis prejudice kept him out of American seminaries, it ironically enabled him to study at one of the foremost educational institutions in the Catholic Church, the College of Sacred Propaganda in Rome.

After his ordination in 1886, Augustine wanted to be assigned to Africa, hoping to escape the racism then so prevalent in America, and was therefore disappointed to be assigned to a church in Quincy. He quickly became a popular figure in St. Joseph Negro Church there, so much so that the jealousy and scorn of some white priests and the envy of some Protestant Negro ministers combined to drive him from his Quincy ministry to Chicago. But Father Tolton recognized that the Catholics who discriminated against him were violating the Church's teachings: "All were born to the image and likeness of God," and he dedicated himself to changing the attitude of discrimination that surrounded him. He is credited with becoming a unifying force for black Catholics, especially in Chicago. His parishioners there loved him, calling him "Good Father Gus."

Father Tolton had a beautiful singing voice and gave eloquent sermons, and people soon crowded his Sunday Masses. He was treated with great respect and his parishioners were very proud to have their own priest to look after them. He began his Chicago ministry in the basement of St. Mary's

Church, working hard to build up a parish from among Chicago's Negro community. Four years after his arrival, he received a \$10,000 donation to build a Negro church that was to be named St. Monica's.

Father Augustine's dreams looked to be on the brink of fulfillment. He had even been invited to preach in the Cathedral of Baltimore and had been sought by Bishops and Cardinals who wanted him to establish Negro churches in their dioceses. Sadly, however, he was felled by heat stroke during a terrible heat wave that struck down many in Chicago in 1897. He was 43. His remains were brought back to Quincy per his request, where he is buried in a circular plot in the center of St. Peter's Cemetery.

Today, four percent of the nation's 64 million Catholics are African-American, thanks, in part, to the perseverance and determination of black priests like Fr. Augustine Tolton, who sought to teach that all were born "in God's image and likeness." I wonder what Father Tolton would think of this. Proud, no doubt, and hopeful.

**Cecilia B. Gaughan**, Fraternal Activities Director

## Tooth Trivia

Teeth are made of enamel; this is the hardest substance in our body. An adult human has 32 teeth. Cats have 30 teeth, dogs have 42, and pigs have 44. Armadillos have as many as 104, but sharks are the "toothiest" – they have an unlimited supply.

President George Washington began losing his teeth in his 20s. It was long believed that Washington's false teeth were made of wood. Researchers dispelled that notion a few years ago by performing laser scans on a set of Washington's dentures. Four known sets of Washington's dentures exist today. They are made from gold, ivory, lead, human and animal teeth (horse and donkey teeth were common components). The dentures had springs to help them open and bolts to hold them together. They didn't fit very well, causing the President a lot of discomfort.

We all remember putting our tooth under the pillow for the Tooth Fairy but in some parts of the world, children leave the teeth they lose for the "Tooth Mouse." Like our Tooth Fairy, the Tooth Mouse leaves treasure in the tooth's place.

Most tooth loss in people under 35 years of age is caused by athletic trauma, fights or accidents. In people above 35, the loss is most commonly from periodontal disease.

People in ancient cultures chewed on twigs and roots to clean their teeth. Egyptians used a form of toothpaste over 5,000 years ago.

Before there were dentists, bad teeth were pulled out by shoemakers and blacksmiths!





## Happy New Year!

Hope you enjoyed the holidays. If you're like me, chances are you're looking forward to an exciting New Year. Make it a year full of positive changes. You know you have the power within you to make it the kind of year you want it to be.

One way to do this is to decide that you're going to make studying a priority. Reading, writing, and arithmetic are important skills that will serve you well throughout your life. So are people skills, including the ability to get along with others. People skills play an ever increasing role throughout your life, so it's important to begin developing them now. These skills will help you grow up to be the kind of person you want to be.

Get the new year off to a good start. You must practice, practice, practice to build good character, just as an athlete practices to build strength and muscles. Be your own personal trainer. Show perseverance and initiative. Be caring, honest, respectful, and tolerant of others, and stay focused on your goals.

The beginning of a new year is always a good time to think about some of the little things you can do to build your character. Here are some suggestions for you to work on.

- Be a good friend. Pass out sincere compliments.
- Be a good classmate. Don't tattle, be polite, and listen to your teacher.
- Play with new kids. Make them feel like they belong.
- Be a good student. Do your best work, do your own work, and never be a copier.
- Be a good citizen. Obey the laws, and respect your neighbor's property.

With all my best wishes, I hope all good things will happen to you in 2009!



## Good Dental Health

February is National Children's Dental Health Month, an annual event designed to promote good oral health habits among children.

Try to avoid unhealthy tooth habits. Start with smart snacking. When the munchies get to you, choose smart snacks like popcorn, pretzels, nuts, fresh vegetables, and cheese. Avoid those sticky, sugary snacks that can lead to tooth decay. Those sweet foods should be eaten only at mealtime, when you can brush, or at least rinse, afterward. And don't sip on soft drinks between meals: they attack your teeth with sugars that can ruin your smile.

A beautiful smile projects good health and charisma. Yellowed, stained, chipped, broken, misshapen, or poorly spaced teeth can ruin this image. And, more importantly, it affects how you feel about yourself, so it's important that you do everything you can to keep your teeth looking their best.



Your toothbrush is a friend in the fight against tooth decay – but only if you use it! Brush in the morning, at night, and after meals to remove the sticky film called plaque that clings to your teeth. Although you cannot see it, plaque attacks your teeth with acid that causes tooth decay. If you can't brush your teeth after you eat, at least rinse your mouth with water. When your toothbrush becomes worn and frazzled, replace it with a new one. And don't forget to floss! Cleaning between teeth is every bit as important as brushing. Since brushing cannot effectively clean between teeth, it's important to floss once a day to remove the plaque build-up in those areas.

Regular dentist visits are important to help keep your mouth clean and healthy. Using X-rays when necessary, your dentist will spot and fix small problems before they become big ones. And the dentist or hygienist will show you the right way to brush and floss to remove plaque from your teeth.

Remember, good nutrition and a balanced diet is important for healthy teeth and gums. Children who learn to take good care of their teeth early in life will most likely continue these habits as teenagers and adults, and will have fewer tooth-related problems later in life.

(Thanks to the American Dental Association for providing some of the information used in this article.)

## Slovak Lesson

### Telo – The Body

Mám dve ruky.  
*I have two hands.*

Ten chlap má dve oči.  
*This man has two eyes.*

Každý človek má hlavu.  
*Every person has a head.*

Kde je tvoj nos?  
*Where is your nose?*

Tvoj jazyk je dlhý.  
*Your tongue is long.*

Ona má dve nohy.  
*She has two feet.*

Ty máš dve uši.  
*You have two ears.*

Na hlave máme vlasy.  
*On the head we have hair.*

Kde sú jej ústa?  
*Where is her mouth?*

Tvoje zuby sú čisté.  
*Your teeth are clean.*

## Kids in the Kitchen

Has Mother ever reminded you, "Don't play with your food!" Why, then, is everyone breaking the rule? Mothers are actually encouraging you to. The reason is Jell-O "Jigglers," a fun way to eat wiggly gelatin treats.

The unique part of this recipe is that you can make it into all sorts of fun shapes and then eat them with your hands.

### JIGGLERS

4-packages (4-serving size) or 2 packages (8-serving size) Jell-O brand gelatin, any flavor  
2½ cups boiling water or fruit juice

Completely dissolve gelatin in boiling water or juice. Pour into a 13x9-inch pan. Chill until firm, about 3 hours. To remove, dip the pan in warm water about 13 seconds. Cut out decorative shapes using cookie cutters. For example, cut out some stars or Valentine hearts or cupids. Enjoy!



# Gazebo Dedicated in Memory of Elaine Shook

On October 11, 2008, approximately 60 relatives and friends of the late Elaine Shook gathered together for a beautiful dedication ceremony of a gazebo built in her memory at Stephen's Place in South Side Bethlehem, Pennsylvania. Elaine and her husband, David Shook, were very supportive of Stephen's Place, where David is Board Chair. The organization is a halfway house that helps rehabilitate drug addicts and alcoholics upon their release from prison. Sister Virginia Longcope, a Missionary Sister of the Sacred Heart, is the founder and Executive Director.

On December 3, 2007, after a long battle with cancer, Elaine was called to her eternal resting place. In lieu of flowers, David requested that donations be made to Stephen's Place in her memory. A total of \$11,000 in donations was received. David suggested that some of the money be used to turn the facility's backyard into a beautiful oasis. In addition to dressing up the landscaping, the Board decided to erect a gazebo in Elaine's memory. On top of the gazebo there is a weathervane topped with an angel that points her trumpet towards the house where Elaine was raised and the church (formerly SS. Cyril and Methodius) that she attended all her life.



**Gathered at the dedication of a gazebo in honor of the late Elaine Shook are, L-R, Elaine's husband David, Mary Shannon, Sister Virginia Longcope, Msgr. Michael J. Chaback, Alexandra Shook, and Margaret Ferri.**

The first task for situating the gazebo was to dig out a 12 x 12 ft. area in the yard. Residents from Stephen's Place, along with men required to do community service from Northampton County parole, dug the hole and filled it with stone that had to be wheelbarrowed from the front of the house. Some men came from Casa Refugio, a Spanish rehab in South Bethlehem, to help with the task. When the gazebo arrived, David Shook, along with a long-time neighbor and friend, several residents, and two volunteers from the Northampton County Probation Department assembled it and placed it on the prepared site.

A formal dedication of the gazebo was held on October 11, 2008, at 1:00 p.m. Sister Virginia relayed how Elaine always raised money for Stephen's Place, cooked meals for the residents, and helped in any way possible. Msgr. Michael J. Chaback, former pastor of SS. Cyril and Methodius Church, offered prayers and blessed the gazebo.

Elaine's husband especially thanked Msgr. Chaback and Sister Virginia for their participation in the beautiful memorial and dedication service for Elaine and thanked everyone for their attendance, inviting them to visit the gazebo at anytime they wished. Afterwards, attendees were invited to a reception in the dining room.

For many years, Elaine served as Recording Secretary of LPSCU Branch 83 in Bethlehem. She succeeded her late mother, Irene Ivanitch, as an officer. Her late grandmother, Elizabeth Spisak, was also an officer of the Branch and served many years as National Trustee of the LPSCU. Representing Branch 83 at the dedication were Branch President Mary Shannon and Margaret and John Ferri.

## Keeping a Positive Attitude

*continued from page 3*

Certainly one of the ways that we can be drawn outside of ourselves is to look for possibilities of giving of our time, talent, and treasure on behalf of God and others. Countless people have said that when they do things on behalf of others, they actually get more out of the experience than the people they are trying to help. In simple acts of self-giving, done for God and others, we can find true meaning and fulfillment in life. Remember, didn't Saint Francis of Assisi say, in his famous **Peace Prayer**, "it is in giving that we receive; and it is in dying that we born to eternal life"?

As we journey through the early days of the New Year, allow me to share with you this very special prayer authored by Edgar A. Guest.

"Lord, Grant me the strength from day to day to bear what burdens come my way. Grant me throughout this bright New Year more to endure and less to fear. Help me live that I may be from spite and petty malice free. Let me not bitterly complain when cherished hopes of mine prove vain.

"Or spoil with deeds of hate and rage some fair tomorrow's spotless page. Lord, as the days shall come and go, in courage let me stronger grow. Lord, as the New Year dawns today, help me to put my faults away. Let me be big in little things; Grant me the joy which friendship brings. Keep me from selfishness and spite; Let me be wise in what is right.

"A happy New Year! Grant that I may bring no tear to any eye. When this New Year in time shall end, let it be said I've played the friend, have lived and loved and labored here, and made of it a happy year. Amen."

With the help of God's grace and with a positive, Christ-like attitude, may this New Year produce the "best of times" for us and for those whom we love. Happy New Year!

**Rev. Philip A. Altavilla, V.E.**